



# CorePro LED tube Mains T5

## CorePro LEDtube 600mm 8W840 G5 I APR

CorePro, LEDtube, T5, Mains, 600 mm, 100-240 V, 8 W, 14W TL5 HE, 4000 K, 1050 lm, 30000 hour(s)

The professional LEDtube MainsFit is a better LED solution suitable for replacing T5 fluorescent lamps. The product provides a natural lighting effect for use in general lighting applications, as well as instant energy savings – an environmentally friendly solution.

### Product data

General Information	
Cap-Base	G5
Nominal lifetime	30,000 hour(s)
Switching Cycle	50,000
Lighting Technology	LEDtube

Light Technical	
Color Code	840 [CCT of 4000K]
Beam Angle (Nom)	200 degree(s)
Luminous Flux	1,050 lm
Color Designation	Cool White (CW)
Correlated Color Temperature (Nom)	4000 K
Luminous Efficacy (rated) (Nom)	131.00 lm/W
Color Consistency	<6
Color rendering index (CRI)	80
LLMF At End Of Nominal Lifetime (Nom)	70 %

Operating and Electrical	
Line Frequency	50 to 60 Hz
Input Frequency	50 to 60 Hz
Power Consumption	8 W
Lamp Current (Max)	89 mA
Lamp Current (Min)	39 mA
Starting Time (Nom)	0.5 s
Warm-up time to 60% light	0.5 s
Power Factor (Fraction)	0.92
Voltage (Nom)	100-240 V
LED alternative to fluorescent lamp power	14W TL5 HE
Ballast Compatibility	Mains

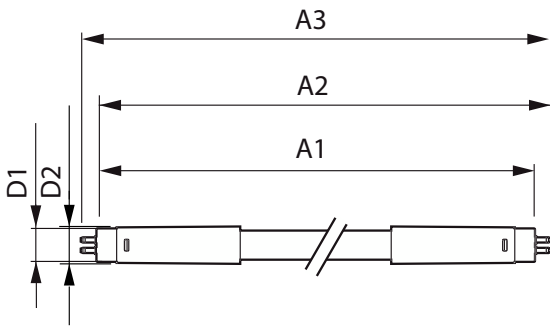
Temperature	
T-Case Maximum (Nom)	70 °C

# CorePro LED tube Mains T5

Controls and Dimming	
Dimmable	No
Mechanical and Housing	
Product Length	600 mm
Bulb Shape	T5
Net Weight (Piece)	0.070 kg
Approval and Application	
Energy Saving Product	Yes
Approval Marks	CE marking RoHS compliance KEMA Keur certificate
Energy Consumption kWh/1000 h	8 kWh
EU RoHS compliant	Yes

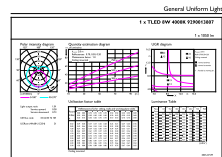
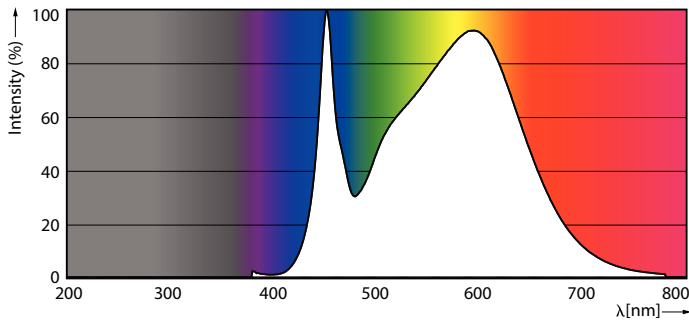
Ambient temperature range	-20 °C to 45 °C
Product Data	
Order product name	CorePro LEDtube 600mm 8W840 G5 I APR
Full product name	CorePro LEDtube 600mm 8W840 G5 I APR
Full product code	871869673198700
Order code	929001380708
Material Nr. (12NC)	929001380708
Numerator - Quantity Per Pack	1
EAN/UPC - Product/Case	8718696731987
Numerator - Packs per outer box	20
EAN/UPC - Case	8718696731994

## Dimensional drawing



Product	D1	D2	A1	A2	A3
CorePro LEDtube 600mm 8W840 G5 I APR	15.8 mm	19 mm	549 mm	556.1 mm	563.2 mm

## Photometric data

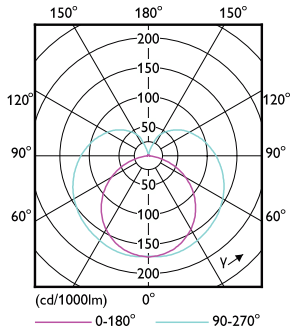


Spectral Power Distribution Colour - CorePro LEDtube 600mm 8W840 G5 I APR

General uniform lighting - CorePro LEDtube 600mm 8W840 G5 I APR

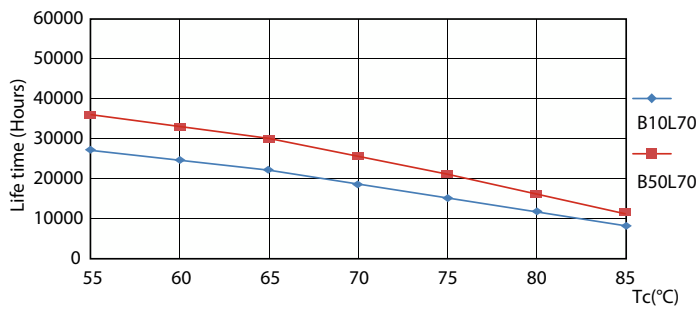
# CorePro LED tube Mains T5

## Photometric data

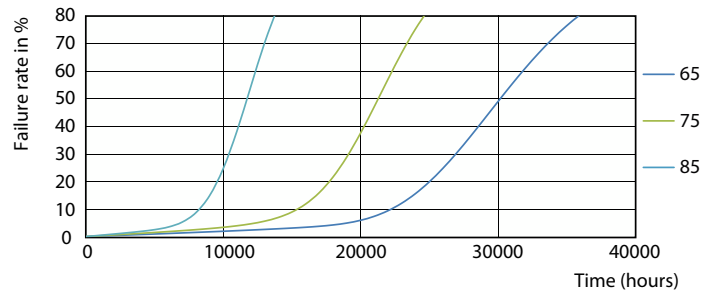


Light Distribution Diagram - CorePro LEDtube 600mm 8W840 G5 I APR

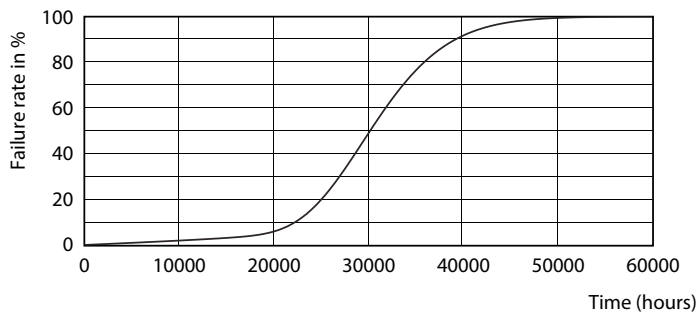
## Lifetime



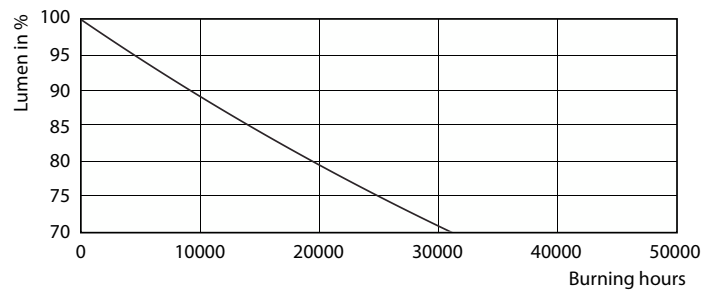
ESSENTIAL LEDtube 8-16W G5 830-865 APR



ESSENTIAL LEDtube 8-16W G5 830-865 APR



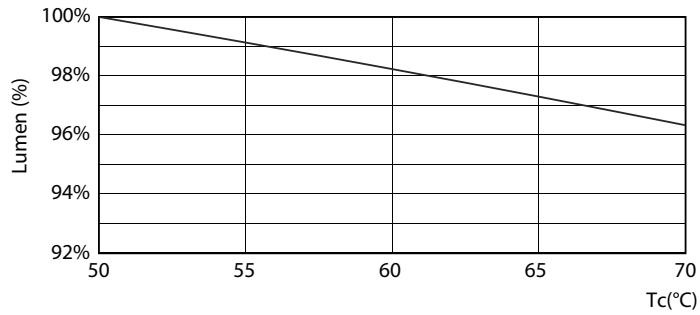
ESSENTIAL LEDtube 8-16W G5 830-865 APR



Lumen Maintenance Diagram - CorePro LEDtube 600mm 8W840 G5 I APR

## CorePro LED tube Mains T5

### Lifetime



Lumen Maintenance Diagram - CorePro LEDtube 600mm 8W840 G5 I APR

