



CorePro LED PLC 2P

LED PLC 6.5W 830 2P G24d-2

LED, PL-C, EM, 124.5 mm, 220-240 V, 6.5 W, 18W PL-C, 3000 K, 650 lm, 30000 hour(s)

CorePro LED PLC 2P integrates a LED light source into a traditional fluorescent form factor. This product is the ideal solution for uplamping in general lighting applications: it meets basic lighting requirements, offers significant energy savings, and is environmentally friendly.

Product data

General Information		Input Frequency	
Cap-Base	G24d-2		50 to 60 Hz
Nominal lifetime	30,000 hour(s)	Power Consumption	6.5 W
Switching Cycle	50,000	Lamp Current (Max)	35 mA
Lighting Technology	LED	Lamp Current (Min)	25 mA
		Starting Time (Nom)	0.5 s
		Warm-up time to 60% light	0.5 s
Light Technical		Power Factor (Fraction)	0.9
Color Code	830 [CCT of 3000K]	Voltage (Nom)	220-240 V
Beam Angle (Nom)	120 degree(s)	LED alternative to fluorescent lamp power	18W PL-C
Luminous Flux	650 lm	Ballast Compatibility	EM
Color Designation	White (WH)		
Correlated Color Temperature (Nom)	3000 K	Temperature	
Luminous Efficacy (rated) (Nom)	100.00 lm/W	T-Case Maximum (Nom)	65 °C
Color Consistency	<6		
Color rendering index (CRI)	83	Controls and Dimming	
LLMF At End Of Nominal Lifetime (Nom)	70 %	Dimmable	No
Operating and Electrical		Mechanical and Housing	
Line Frequency	50 to 60 Hz	Product Length	124.5 mm

CorePro LED PLC 2P

Bulb Shape	PL-C
Net Weight (Piece)	0.080 kg

Approval and Application

Energy Saving Product	Yes
Approval Marks	TUV CE marking RoHS compliance KEMA Keur certificate
Energy Consumption kWh/1000 h	9 kWh
EU RoHS compliant	Yes
Ambient temperature range	-20 °C to 35 °C

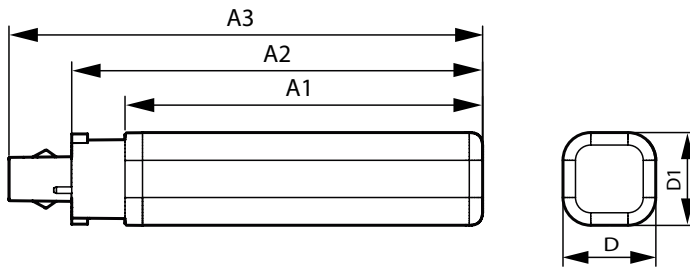
Application Conditions

Wireless Technology	Not applicable
---------------------	----------------

Product Data

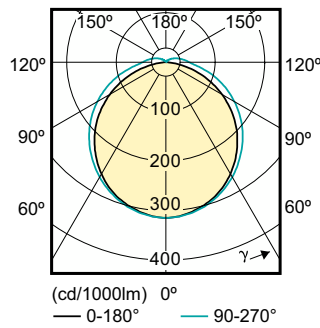
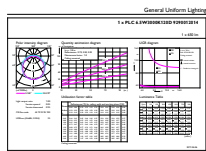
Order product name	LED PLC 6.5W 830 2P G24d-2
Full product name	LED PLC 6.5W 830 2P G24d-2
Full product code	871869667003300
Order code	929001201408
Material Nr. (12NC)	929001201408
Numerator - Quantity Per Pack	1
EAN/UPC - Product/Case	8718696670033
Numerator - Packs per outer box	10
EAN/UPC - Case	8718696670040

Dimensional drawing



Product	D1	D	A1	A2	A3
LED PLC 6.5W 830 2P G24d-2	34 mm	34 mm	106 mm	125 mm	148 mm

Photometric data

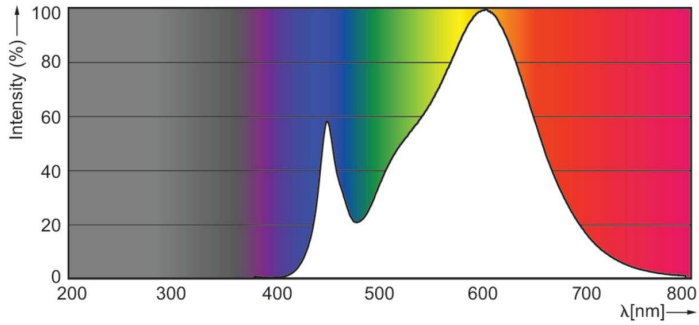


General uniform lighting - LED PLC 6.5W 830 2P G24d-2

Light Distribution Diagram - LED PLC 6.5W 830 2P G24d-2

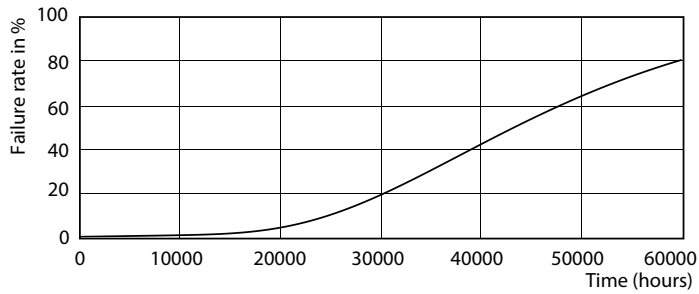
CorePro LED PLC 2P

Photometric data

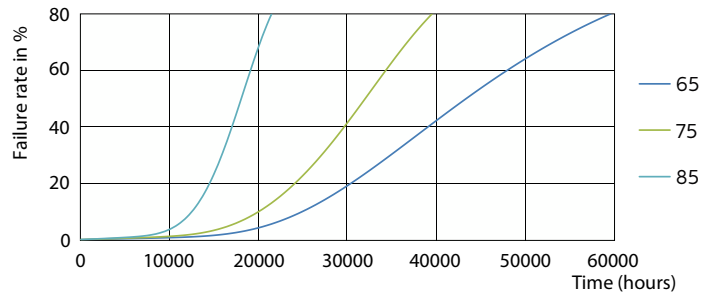


Spectral Power Distribution Colour - LED PLC 6.5W 830 2P G24d-2

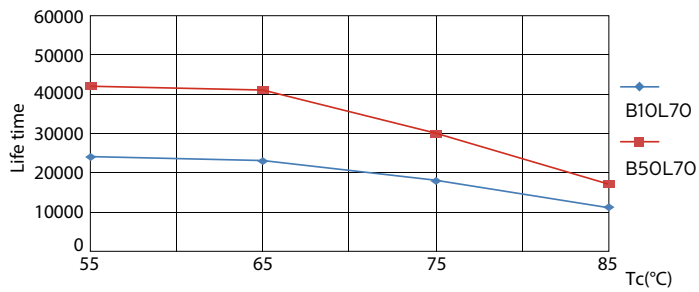
Lifetime



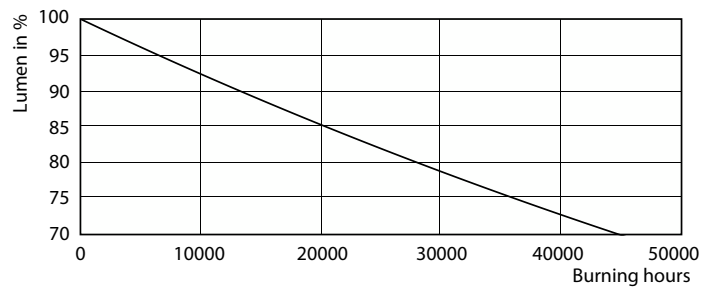
LEDtube PLC 100mm 7W G24D-2 830 650lm



LEDtube PLC 100mm 7W G24D-2 830 650lm



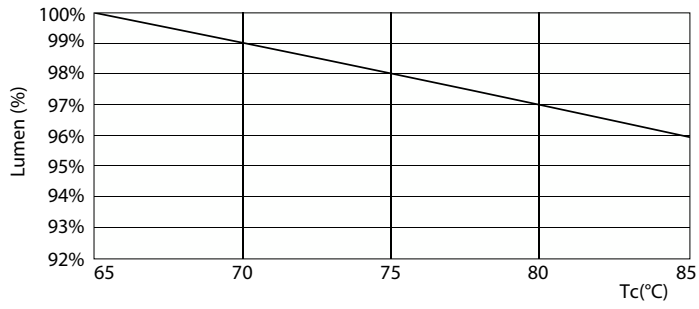
LEDtube PLC 100mm 7W G24D-2 830 650lm



Lumen Maintenance Diagram - LED PLC 6.5W 830 2P G24d-2

CorePro LED PLC 2P

Lifetime



Lumen Maintenance Diagram - LED PLC 6.5W 830 2P G24d-2

