



CorePro LED PLC 4P

CorePro LED PLC 6.5W 840 4P G24q-2

CorePro, LED, PL-C, HF, 124.5 mm, 6.5 W, 18W PL-C, 4000 K, 700 lm, CRI 83, 30000 hour(s)

CorePro, LED, PL-C, HF, 124.5 mm, 6.5 W, LED alternative to 18W PL-C, 4000 K, 700 lm, CRI 83, 30000 hour(s), 92.31 lm/W, EEL F, G24q-2, Beam angle 120 degree(s), RGO, SDCM 6, PF 0.9, IP20

Product data

General Information	
Cap-Base	G24q-2
Nominal lifetime	30,000 hour(s)
Switching Cycle	50,000
Lighting Technology	LED
Flux measurement reference	Sphere
Light Technical	
Color Code	840 [CCT of 4000K]
Beam Angle (Nom)	120 degree(s)
Luminous Flux	700 lm
Color Designation	Cool White (CW)
Correlated Color Temperature (Nom)	4000 K
Luminous Efficacy (rated) (Nom)	92.31 lm/W
Color Consistency	<6
Color rendering index (CRI)	83
LLMF At End Of Nominal Lifetime (Nom)	70 %
Photobiological safety according to EN 62471	RGO

Operating and Electrical	
Line Frequency	30000-80000 Hz
Input Frequency	30000-80000 Hz
Power Consumption	6.5 W
Lamp Current (Max)	300 mA
Lamp Current (Min)	150 mA
Starting Time (Nom)	0.5 s
Warm-up time to 60% light	0.5 s
Power Factor (Fraction)	0.9
Voltage (Nom)	20-50 V
LED alternative to fluorescent lamp power	18W PL-C
Inrush current at mains	-
Max. lamp no. on MCB B type 10A - Mains	-
Max. lamp no. on MCB B type 10A – EM ballast without Compensation Capacitor.	-
Max. lamp no. on MCB B type 10A – EM ballast with Compensation Capacitor.	-
Max. lamp no. on MCB B type 16A - Mains	-
Max. lamp no. on MCB B type 16A – EM ballast without Compensation Capacitor.	-

CorePro LED PLC 4P

Max. lamp no. on MCB B type 16A – EM ballast with Compensation Capacitor.	-
Ballast Compatibility	HF
Temperature	
T-Case Maximum (Nom)	66 °C
Controls and Dimming	
Dimmable	No
Mechanical and Housing	
Product Length	124.5 mm
Bulb Shape	PL-C
Net Weight (Piece)	0.078 kg
Approval and Application	
Energy Efficiency Class	F
Energy Saving Product	Yes
Approval Marks	RoHS compliance
Energy Consumption kWh/1000 h	7 kWh
EPREL Registration Number	403553

CE mark	Yes
EU RoHS compliant	Yes
Ambient temperature range	-20 °C to 35 °C

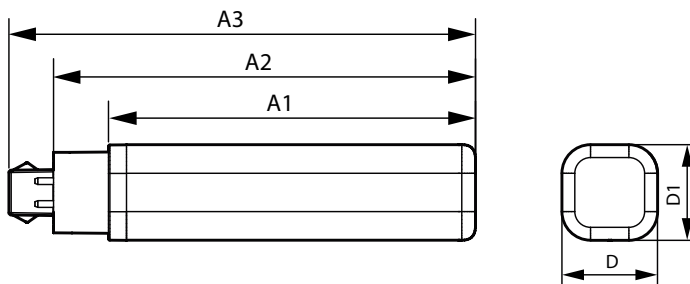
Application Conditions

Wireless Technology	Not applicable
---------------------	----------------

Product Data

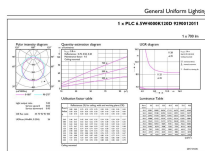
Order product name	CorePro LED PLC 6.5W 840 4P G24q-2
Full product name	CorePro LED PLC 6.5W 840 4P G24q-2
Full product code	871869654121000
Order code	929001201102
Material Nr. (12NC)	929001201102
Numerator - Quantity Per Pack	1
EAN/UPC - Product/Case	8718696541210
Numerator - Packs per outer box	10
EAN/UPC - Case	8718696541227

Dimensional drawing

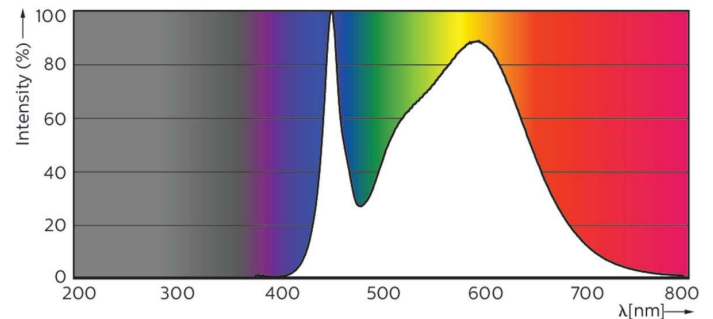


Product	D1	D	A1	A2	A3
CorePro LED PLC 6.5W 840 4P G24q-2	34 mm	34 mm	105 mm	125 mm	141 mm

Photometric data



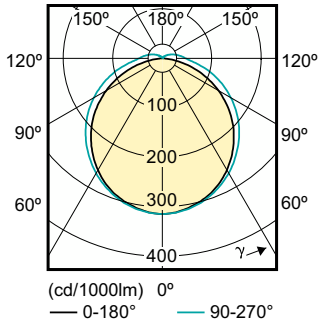
General uniform lighting - CorePro LED PLC 6.5W 840 4P G24q-2



Spectral Power Distribution Colour - CorePro LED PLC 6.5W 840 4P G24q-2

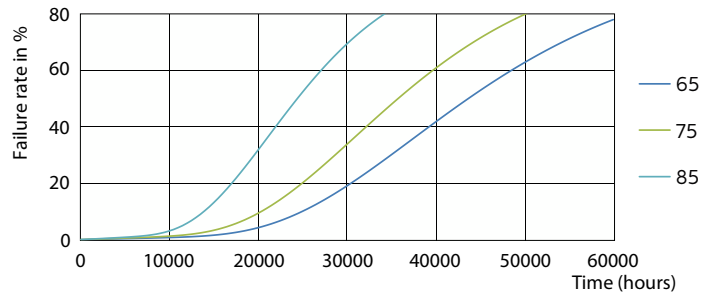
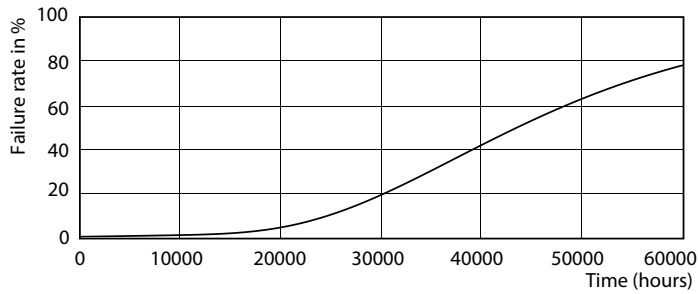
CorePro LED PLC 4P

Photometric data



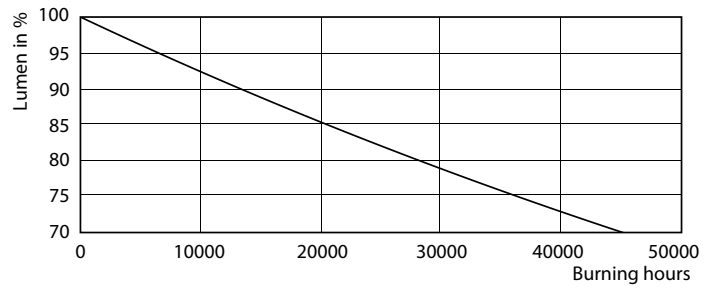
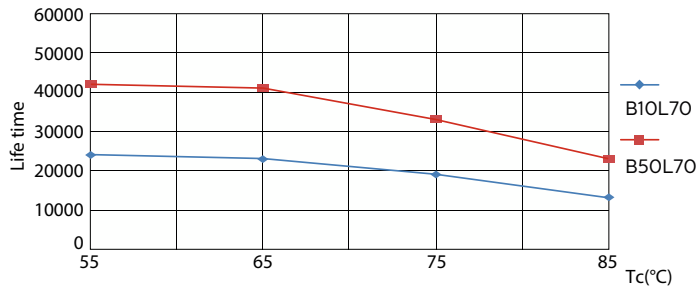
Light Distribution Diagram - CorePro LED PLC 6.5W 840 4P G24q-2

Lifetime



LEDtube PLC 100mm 7W G24Q-2 830 650lm

LEDtube PLC 100mm 7W G24Q-2 830 650lm

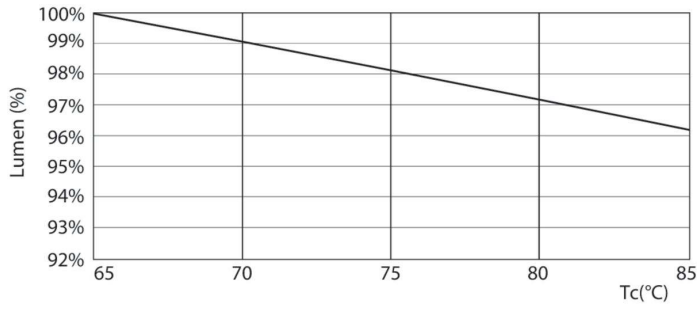


LEDtube PLC 100mm 7W G24Q-2 830 650lm

Lumen Maintenance Diagram - CorePro LED PLC 6.5W 840 4P G24q-2

CorePro LED PLC 4P

Lifetime



Lumen Maintenance Diagram - CorePro LED PLC 6.5W 840 4P G24q-2

