



# CorePro LED PLC 4P

## CorePro LED PLC 9W 840 4P G24q-3

CorePro, LED, PL-C, HF, 147.5 mm, 9 W, 26W PL-C, 4000 K, 1000 lm, CRI 83, 30000 hour(s)

CorePro, LED, PL-C, HF, 147.5 mm, 9 W, LED alternative to 26W PL-C, 4000 K, 1000 lm, CRI 83, 30000 hour(s), 100.00 lm/W, EEL F, G24q-3, Beam angle 120 degree(s), RGO, SDCM 6, PF 0.9, IP20

### Product data

General Information	
Cap-Base	G24q-3
Nominal lifetime	30,000 hour(s)
Switching Cycle	50,000
Lighting Technology	LED
Flux measurement reference	Sphere
Light Technical	
Color Code	840 [CCT of 4000K]
Beam Angle (Nom)	120 degree(s)
Luminous Flux	1,000 lm
Color Designation	Cool White (CW)
Correlated Color Temperature (Nom)	4000 K
Luminous Efficacy (rated) (Nom)	100.00 lm/W
Color Consistency	<6
Color rendering index (CRI)	83
LLMF At End Of Nominal Lifetime (Nom)	70 %
Photobiological safety according to EN 62471	RGO

Operating and Electrical	
Line Frequency	30000-80000 Hz
Input Frequency	30000-80000 Hz
Power Consumption	9 W
Lamp Current (Max)	400 mA
Lamp Current (Min)	250 mA
Starting Time (Nom)	0.5 s
Warm-up time to 60% light	0.5 s
Power Factor (Fraction)	0.9
Voltage (Nom)	20-50 V
LED alternative to fluorescent lamp power	26W PL-C
Inrush current at mains	-
Max. lamp no. on MCB B type 10A - Mains	-
Max. lamp no. on MCB B type 10A – EM ballast without Compensation Capacitor.	-
Max. lamp no. on MCB B type 10A – EM ballast with Compensation Capacitor.	-
Max. lamp no. on MCB B type 16A - Mains	-
Max. lamp no. on MCB B type 16A – EM ballast without Compensation Capacitor.	-

# CorePro LED PLC 4P

Max. lamp no. on MCB B type 16A – EM ballast with Compensation Capacitor.	-
Ballast Compatibility	HF
<b>Temperature</b>	
T-Case Maximum (Nom)	76 °C
<b>Controls and Dimming</b>	
Dimmable	No
<b>Mechanical and Housing</b>	
Product Length	147.5 mm
Bulb Shape	PL-C
Net Weight (Piece)	0.088 kg
<b>Approval and Application</b>	
Energy Efficiency Class	F
Energy Saving Product	Yes
Approval Marks	RoHS compliance
Energy Consumption kWh/1000 h	9 kWh
EPREL Registration Number	403551

CE mark	Yes
EU RoHS compliant	Yes
Ambient temperature range	-20 °C to 35 °C

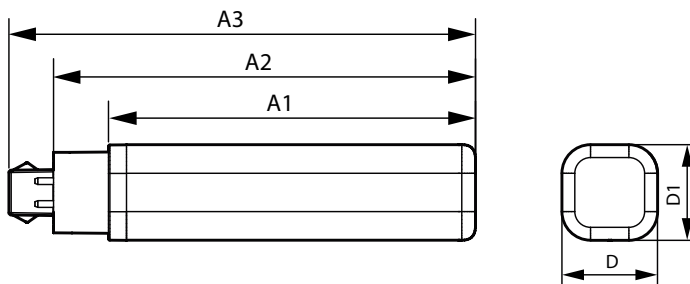
## Application Conditions

Wireless Technology	Not applicable
---------------------	----------------

## Product Data

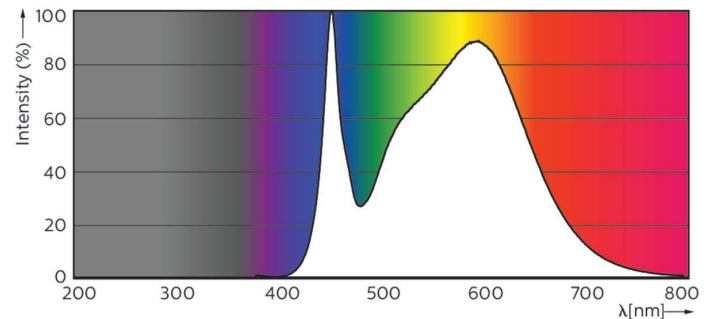
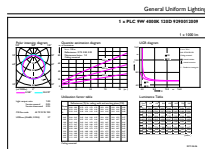
Order product name	CorePro LED PLC 9W 840 4P G24q-3
Full product name	CorePro LED PLC 9W 840 4P G24q-3
Full product code	871869654117300
Order code	929001200902
Material Nr. (12NC)	929001200902
Numerator - Quantity Per Pack	1
EAN/UPC - Product/Case	8718696541173
Numerator - Packs per outer box	10
EAN/UPC - Case	8718696541180

## Dimensional drawing



Product	D1	D	A1	A2	A3
CorePro LED PLC 9W 840 4P G24q-3	34 mm	34 mm	129 mm	148 mm	164 mm

## Photometric data

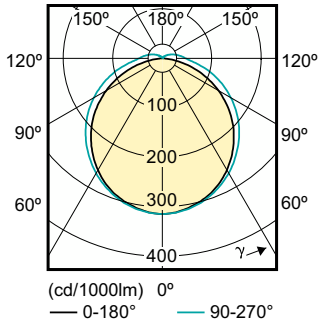


General uniform lighting - CorePro LED PLC 9W 840 4P G24q-3

Spectral Power Distribution Colour - CorePro LED PLC 9W 840 4P G24q-3

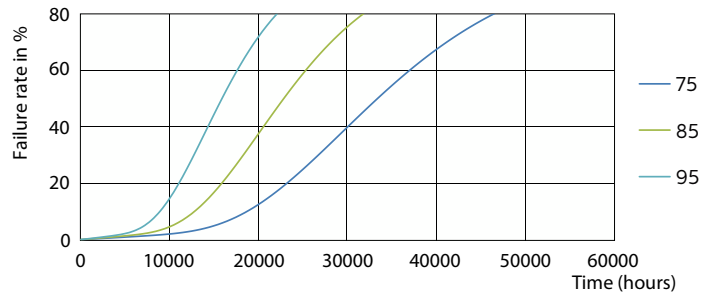
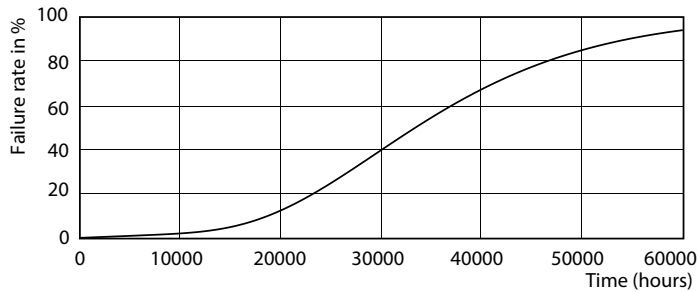
# CorePro LED PLC 4P

## Photometric data



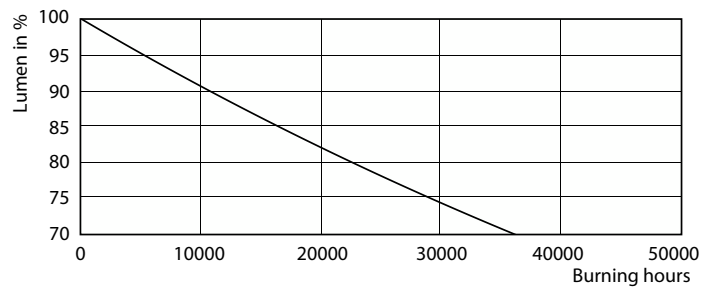
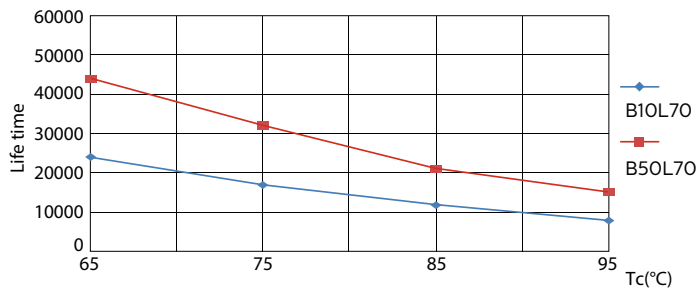
Light Distribution Diagram - CorePro LED PLC 9W 840 4P G24q-3

## Lifetime



LEDtube PLC 100mm 9W G24Q-3 830 950lm

LEDtube PLC 100mm 9W G24Q-3 830 950lm

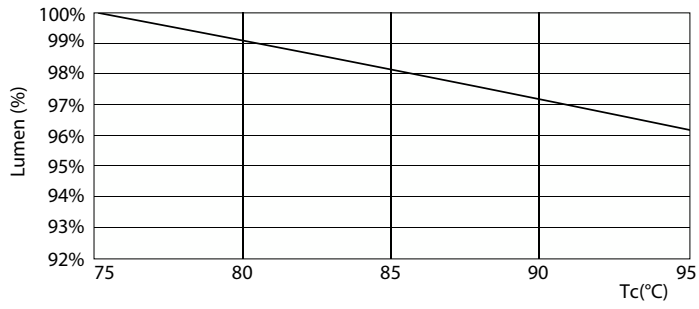


LEDtube PLC 100mm 9W G24Q-3 830 950lm

Lumen Maintenance Diagram - CorePro LED PLC 9W 840 4P G24q-3

# CorePro LED PLC 4P

## Lifetime



Lumen Maintenance Diagram - CorePro LED PLC 9W 840 4P G24q-3

