

# MSD Platinum (Touring/Stage)

## MSD Platinum 500L Flex 1CT/8

The MSD Platinum lamps open up new levels of creative freedom in entertainment lighting, with powerful, compact and brilliantly intense light. Their compact, lightweight design provides the freedom to create smaller, lighter luminaires – for use at any location on stage. And their short arc, high color temperature and innovative reflector produce a sparkling, high beam intensity for outstanding color reproduction. They also offer long and reliable lifetime, high efficacy and fast replacement times. It all adds up to an intensely exciting creative experience.

### Warnings and Safety

- A lamp breaking is extremely unlikely to have any impact on your health. If a lamp breaks, ventilate the room for 30 minutes and remove the parts, preferably with gloves. Put them in a sealed plastic bag and take it to your local waste facilities for recycling. Do not use a vacuum cleaner.

### Product data

General Information	
Life to 50% Failures (Nom)	1,500 hour(s)
Life to 50% Failures entertainment cycle (Nom)	4,500 hour(s)
Light Technical	
Color Code	2
Luminous Flux	26,000 lm
Chromaticity Coordinate X (Nom)	297
Chromaticity Coordinate Y (Nom)	303
Correlated Color Temperature (Nom)	8000 K
Arc Length O (Nom)	1.4 mm

Operating and Electrical	
Power Consumption	550 W
Controls and Dimming	
Dimmable	Yes
Mechanical and Housing	
Net Weight (Piece)	108.000 g

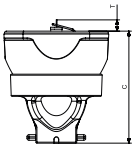
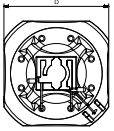
Product Data	
Order product name	MSD Platinum 500L Flex 1CT/8
Full product name	MSD Platinum 500L Flex 1CT/8
Full product code	692234199966600

## MSD Platinum (Touring/Stage)

Order code	928498105314
Material Nr. (12NC)	928498105314
Numerator - Quantity Per Pack	1
EAN/UPC - Product/Case	6922341999666

Numerator - Packs per outer box	8
EAN/UPC - Case	6922341993275

### Dimensional drawing



Product	D (max)	O	C (max)
MSD Platinum 500L Flex 1CT/8	54.5 mm	1.4 mm	60 mm

