



# Copenhagen LED gen2 small

## BPS561 LED35/830 II DM31 GW CLO C10K 60P

Copenhagen LED gen2 small, Urban road & street light, 26.5 W, 3348 lm, 3000 K, CRI80, Internal (no external connection), Distribution medium 31, Safety class II, IP66, SRG6-10

The original Copenhagen luminaire was co-designed with Copenhagen's Office of City Architecture in the 1960s with the aim of enhancing the aesthetic appeal of the city through lighting. This timeless luminaire design comes in two types: Copenhagen City LED Gen2 is for city and residential areas where light comfort is important; Copenhagen LED Gen2 delivers high performance for road lighting applications. The second generation of Copenhagen LED is available in a range of sizes, from mini to mega. This makes it suitable for any type of application while ensuring the dimensions of the luminaire and pole are well balanced, so every installation blends harmoniously into its surroundings. Various suspensions are available, allowing a variety of mounting options to provide maximum freedom during installation. Thanks to the built in LEDGINE-O engine, and the wide range of application-tailored optics, Copenhagen LED luminaires deliver the right amount of light and in the right direction on your street, enabling important energy savings. The luminaire is available with one or two Zhaga-D4i (ZD4i) System Ready (SR) sockets, which makes the luminaire future ready. This means Copenhagen LED Gen2 is ready to pair with advanced control and lighting software applications such as Interact, or sensors such as the Outdoor Sensor Bundle (OSB). And because the top SR socket is integrated into the canopy, it has no impact on the beautiful, clean design of the luminaire. Furthermore, every Copenhagen LED Gen2 BPS559, BRS561, BRS562 and BRS563 luminaire is uniquely identifiable, thanks to the Signify Service tag app. By simply scanning a QR code, placed inside the door of the mast or directly on the luminaire, you can instantly access the configuration of the luminaire. This makes maintenance and programming operations faster and easier and enables you to create a digital library of lighting assets and spare parts.

# Copenhagen LED gen2 small

## Product data

| General Information      |                            |
|--------------------------|----------------------------|
| Lamp family code         | LED35 [LED module 3500 lm] |
| Light source replaceable | Yes                        |
| Number of gear units     | 1 unit                     |
| Driver included          | Yes                        |
| Light source engine type | LED                        |
| Service tag              | Yes                        |
| Lighting Technology      | LED                        |
| Value ladder             | Specification              |
| Warranty period          | 5 years                    |

| Light Technical                    |                        |
|------------------------------------|------------------------|
| Upward light output ratio          | 0.5                    |
| Luminous Flux                      | 3,348 lm               |
| Correlated Color Temperature (Nom) | 3000 K                 |
| Luminous Efficacy (rated) (Nom)    | 113 lm/W               |
| Color rendering index (CRI)        | 80                     |
| Light source color                 | 830 warm white         |
| Luminaire light beam spread        | -                      |
| Optic type outdoor                 | Distribution medium 31 |
| Effective projected area           | 0.08 m <sup>2</sup>    |

| Operating and Electrical                 |                                                                           |
|------------------------------------------|---------------------------------------------------------------------------|
| Input Voltage                            | 220-240 V                                                                 |
| Line Frequency                           | 50 to 60 Hz                                                               |
| Initial CLO power consumption            | 26.5 W                                                                    |
| Average CLO power consumption            | 27 W                                                                      |
| End CLO power consumption                | 27.5 W                                                                    |
| Inrush current                           | 21 A                                                                      |
| Inrush time                              | 0.225 ms                                                                  |
| Power Consumption                        | 26.5 W                                                                    |
| Power Factor (Fraction)                  | 0.97                                                                      |
| Connection                               | Flying leads/wires                                                        |
| Cable                                    | Cable 10 m without plug                                                   |
| Number of products on MCB of 16 A type B | 26                                                                        |
| Protection class IEC                     | Safety class II                                                           |
| Surge Protection (Common/Differential)   | Surge protection level until 6 kV differential mode and 10 kV common mode |

| Controls and Dimming          |                                   |
|-------------------------------|-----------------------------------|
| Dimmable                      | No                                |
| Driver/power unit/transformer | Power supply unit (On/Off)        |
| Control interface             | Internal (no external connection) |
| Constant light output         | Yes                               |
| DALI Standard                 | DALI-2™                           |
| Maximum dim level             | 10%                               |

| Embedded control                    | Constant light output                        |
|-------------------------------------|----------------------------------------------|
| Mechanical and Housing              |                                              |
| Housing Material                    | Polyethylene                                 |
| Reflector material                  | -                                            |
| Optic material                      | Polymethyl methacrylate                      |
| Optical cover material              | Glass                                        |
| Fixation material                   | Aluminum                                     |
| Housing Color                       | Opal                                         |
| Mounting device                     | Post-top for diameter 60 mm                  |
| Optical cover shape                 | Flat                                         |
| Optical cover finish                | Clear                                        |
| Overall length                      | 600 mm                                       |
| Overall width                       | 380 mm                                       |
| Overall height                      | 334 mm                                       |
| Overall diameter                    | 380 mm                                       |
| Dimensions (Height x Width x Depth) | 334 x 380 x 600 mm                           |
| Ingress protection code             | IP66 [Dust penetration-protected, jet-proof] |
| Mech. impact protection code        | IK08 [5 J vandal-protected]                  |
| Standard tilt angle posttop         | 0°                                           |
| Standard tilt angle side entry      | 0°                                           |
| Optical cover type                  | Flat glass                                   |
| Net Weight (Piece)                  | 5.400 kg                                     |

| Approval and Application           |               |
|------------------------------------|---------------|
| Flammability mark                  | -             |
| CE mark                            | Yes           |
| ENEC mark                          | -             |
| EU RoHS compliant                  | Yes           |
| Performance ambient temperature Tq | 25 °C         |
| Ambient temperature range          | -40 to +25 °C |

| Initial Performance (IEC Compliant)                    |         |
|--------------------------------------------------------|---------|
| Luminous flux tolerance                                | +/-7%   |
| Initial chromaticity                                   | SDCM <5 |
| Power consumption tolerance                            | +/-10%  |
| Init. Color Rendering Index Tolerance                  | +/-2    |
| Standard Deviation of Colour Matching (McAdam ellipse) | SDCM≤5  |

| Over Time Performance (IEC Compliant)                               |      |
|---------------------------------------------------------------------|------|
| Control gear failure rate at median useful life 100000 h            | 10 % |
| Lumen maintenance (EN-IEC 62722-2-1) at median useful life* 35000 h | -    |
| Lumen maintenance (EN-IEC 62722-2-1) at median useful life* 50000 h | -    |

# Copenhagen LED gen2 small

|                                                                      |      |
|----------------------------------------------------------------------|------|
| Lumen maintenance (EN-IEC 62722-2-1) at median useful life* 75000 h  | -    |
| Lumen maintenance (EN-IEC 62722-2-1) at median useful life* 100000 h | L100 |

## Sustainability Data

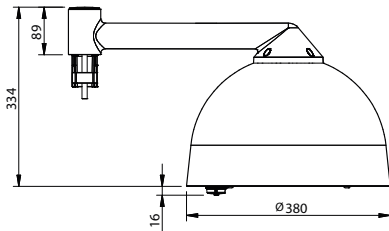
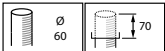
|                                                      |                                                                                                                                                                              |
|------------------------------------------------------|------------------------------------------------------------------------------------------------------------------------------------------------------------------------------|
| Sustainability rating                                | Signify Circle                                                                                                                                                               |
| Repair class                                         | Repair Class B, the driver and light source of this luminaire can be replaced by a service technician. Parts and documentation are available for an extended period of time. |
| Embedded carbon (A1-A3)                              | 31.7 kg CO <sub>2</sub> e                                                                                                                                                    |
| Product non-virgin material ratio                    | 22.2 %                                                                                                                                                                       |
| Recyclable content ratio of the finished product     | 39.8 %                                                                                                                                                                       |
| GWP total B6 (kg CO <sub>2</sub> eq) Declared Unit   | Please calculate using your local energy mix value: Power Declared Unit (kW) * Service life (hrs) Declared Unit * Energy mix (kg CO <sub>2</sub> eq / kWh)                   |
| GWP total B6 (kg CO <sub>2</sub> eq) Functional Unit | Please calculate using your local energy mix value: Power Declared Unit (kW) *                                                                                               |

1000 (lm) /lumen output (lm) Declared Unit \* 35000 (hrs) \* Energy mix (kg CO<sub>2</sub> eq / kWh)

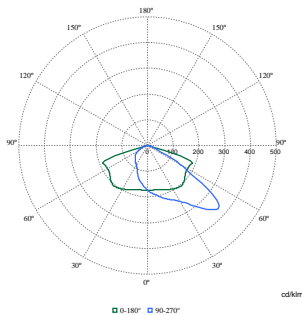
## Product Data

|                                 |                                          |
|---------------------------------|------------------------------------------|
| Order product name              | BPS561 LED35/830 II DM31 GW CLO C10K 60P |
| Full product name               | BPS561 LED35/830 II DM31 GW CLO C10K 60P |
| Full product code               | 872016912953500                          |
| Order code                      | 919008636724                             |
| Material Nr. (12NC)             | 919008636724                             |
| Numerator - Quantity Per Pack   | 1                                        |
| EAN/UPC - Product/Case          | 8720169129535                            |
| Numerator - Packs per outer box | 1                                        |
| EAN/UPC - Case                  | 8720169129535                            |
| Product family code             | BPS561 [Copenhagen LED gen2 small]       |

## Dimensional drawing



## Photometric data



Polar Normal (separate) - BRS561I - 919008636723

## Copenhagen LED gen2 small

