



HID-Basic ballasts for HPL and HPI(PLUS) lamps

BHLE 400L 200 TS

The HID-Basic ballast is an impregnated (HID standard) electromagnetic ballast for HID lamps, for use in combination with an external ignitor.

Product data

Operating and Electrical	
Input Voltage	220 V
Line Frequency	50 Hz
Input Frequency	50 Hz

Wiring	
Connector Type	Screw

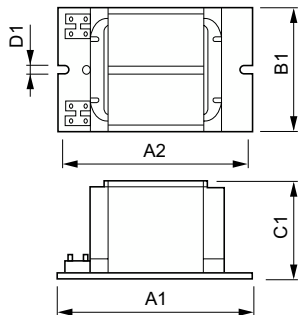
Mechanical and Housing	
Net Weight (Piece)	2.900 kg

Approval and Application	
Approval Marks	CE marking

Product Data	
Order product name	BHLE 400L 200 TS
Full product name	BHLE 400L 200 TS
Full product code	697480505031400
Order code	913713017342
Material Nr. (12NC)	913713017342
Numerator - Quantity Per Pack	1
EAN/UPC - Product/Case	6974805050314
Numerator - Packs per outer box	6
EAN/UPC - Case	6974805050321

HID-Basic ballasts for HPL and HPI(PLUS) lamps

Dimensional drawing



Product	D1	C1	A1	A2	B1
BHLE 400L 200 TS	6.2 mm	64.5 mm	165.0 mm	144.0 mm	75.5 mm

