

# PrimaVision Mini for CDM

## HID-PV m 20 /S CDM 220-240V 50/60Hz

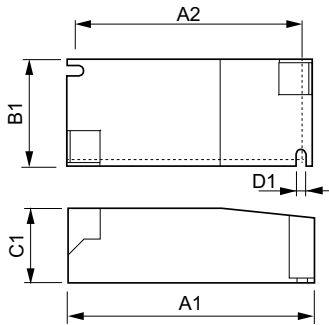
Miniature HID electronic gear for PGJ5 CDM lamps – freeing up the boundaries of creativity and innovation in luminaire design

### Product data

Operating and Electrical		Net Weight (Piece)	
Input Voltage	220 to 240 V		0.115 kg
Line Frequency	50 to 60 Hz	Approval and Application	
Input Frequency	50 to 60 Hz	Approval Marks	CE marking ENEC certificate VDE certificate
Earth Leakage Current (Max)	0.5 mA	Ambient temperature range	-20 °C to 55 °C
Inrush Current Width	0.25 ms	Product Data	
Inrush Current Peak (Max)	15 A	Order product name	HID-PV m 20 /S CDM 220-240V 50/60Hz
Number of Products on MCB (16A Type B) (Nom)	32	Full product name	HID-PV m 20 /S CDM 220-240V 50/60Hz
Wiring		Full product code	871829167159600
Cable Length From Device to Lamp	0.5 m	Order code	67159600
Connector Type	Insert	Material Nr. (12NC)	913700696066
Temperature		Numerator - Quantity Per Pack	1
T-Case Lifetime (Nom)	80 °C	EAN/UPC - Product/Case	8718291671596
T-Case Maximum (Max)	80 °C	Numerator - Packs per outer box	12
		EAN/UPC - Case	8718291671602
Mechanical and Housing			
Housing	/S		

# PrimaVision Mini for CDM

## Dimensional drawing



Product	D1	C1	A1	A2	B1
HID-PV m 20 /S CDM 220-240V 50/60Hz	4.2 mm	30.2 mm	97.3 mm	88.3 mm	43.3 mm

