



HF-Matchbox Blue

HF-M BLUE 124 SH TL/TL5/PL-L 230-240V

Compact, lightweight, High Frequency electronic ballast for TL (4-18W), TL5 (14-28W) and compact fluorescent PL (5-24W) lamps

Product data

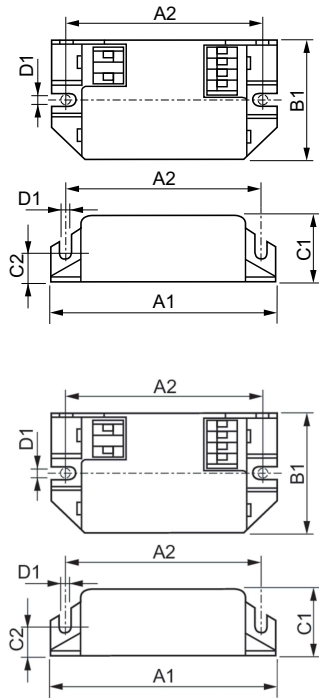
Operating and Electrical	
Input Voltage	230 to 240 V
Line Frequency	50 to 60 Hz
Input Frequency	50 to 60 Hz
Number of Products on MCB (16A Type B) (Nom)	60
Wiring	
Connector Type Input Terminals	Insert
Color Input Terminals	Orange
Color Output Terminals	Grey
Connector Type Output Terminals	Insert
Cable Length From Device to Lamp	1.50 m
Temperature	
T-Case Maximum (Max)	75 °C
Mechanical and Housing	
Housing	SH
Ingress protection code	IP20 [Finger-protected]

Net Weight (Piece)	0.040 kg
Approval and Application	
Approval Marks	F-Marking CE marking VDE certificate CB Certificate
CE mark	Yes
Ambient temperature range	-10 °C to 40 °C

Product Data	
Order product name	HF-M BLUE 124 SH TL/TL5/PL-L 230-240V
Full product name	HF-M BLUE 124 SH TL/TL5/PL-L 230-240V
Full product code	871150053638930
Order code	53638930
Material Nr. (12NC)	913700417966
Numerator - Quantity Per Pack	1
EAN/UPC - Product/Case	8711500536389
Numerator - Packs per outer box	50
EAN/UPC - Case	8711500536396

HF-Matchbox Blue

Dimensional drawing



Product

HF-M BLUE 124 SH TL/TL5/PL-L 230-240V

Product

Product	A1	A2	B1	C1	D1
HF-M BLUE 124 SH TL/TL5/PL-L 230-240V	94 mm	84 mm	40 mm	22 mm	4.4 mm

