

# HID-Basic BSN/BMH MK4 semi-parallel for SON/CDO/CDM/MH/ HPI

## BSN 400 K407-A2-ITS 230/240V 50Hz BC3

Impregnated electromagnetic copper ballasts for use with an external semi-parallel ignitor for CDM, CDO, MH, HPI (Plus) and SON lamps

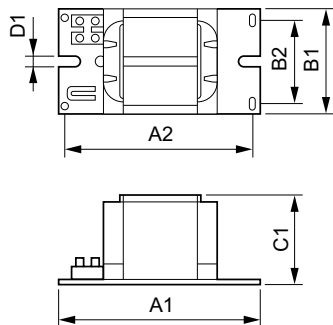
### Product data

| Operating and Electrical |                             |
|--------------------------|-----------------------------|
| Input Voltage            | 230 V (default) or 240 V    |
| Line Frequency           | 50 Hz                       |
| Input Frequency          | 50 Hz                       |
| Wiring                   |                             |
| Connector Type           | Screw                       |
| Mechanical and Housing   |                             |
| Net Weight (Piece)       | 4.950 kg                    |
| Approval and Application |                             |
| Approval Marks           | CE marking ENEC certificate |
| CE mark                  | Yes                         |

| Product Data                    |                                       |
|---------------------------------|---------------------------------------|
| Order product name              | BSN 400 K407-A2-ITS 230/240V 50Hz BC3 |
| Full product name               | BSN 400 K407-A2-ITS 230/240V 50Hz BC3 |
| Full product code               | 872790088704400                       |
| Order code                      | 913700277826                          |
| Material Nr. (12NC)             | 913700277826                          |
| Numerator - Quantity Per Pack   | 1                                     |
| EAN/UPC - Product/Case          | 8711500881571                         |
| Numerator - Packs per outer box | 2                                     |
| EAN/UPC - Case                  | 8727900887044                         |

# HID-Basic BSN/BMH MK4 semi-parallel for SON/CDO/CDM/MH/HPI

## Dimensional drawing



| Product                                  | D1     | C1      | A1       | A2       | B1      | B2      |
|------------------------------------------|--------|---------|----------|----------|---------|---------|
| BSN 400 K407-A2-ITS<br>230/240V 50Hz BC3 | 6.5 mm | 83.0 mm | 166.0 mm | 145.0 mm | 97.0 mm | 78.5 mm |

