



## Coreline tempo medium

Inrush current	53 A
Inrush time	0.3 ms
Power Consumption	105 W
Power Factor (Fraction)	0.98
Connection	External connector
Cable	Cable 1.0 m with plug Wieland/Adels compatible 3-pole
Number of products on MCB of 16 A type B	10
Protection class IEC	Safety class I
Surge Protection (Common/Differential)	Surge protection level until 6 kV differential mode and 8 kV common mode

### Controls and Dimming

Dimmable	No
Driver/power unit/transformer	Power supply unit (On/Off)
Constant light output	No

### Mechanical and Housing

Housing Material	Aluminum
Reflector material	-
Optic material	Polycarbonate
Optical cover material	Glass
Fixation material	Aluminum
Housing Color	Grey
Mounting device	Wall-mounting bracket
Optical cover shape	Flat
Optical cover finish	Clear
Overall length	340.5 mm
Overall width	265 mm
Overall height	67.4 mm
Dimensions (Height x Width x Depth)	67 x 265 x 341 mm
Ingress protection code	IP66 [Dust penetration-protected, jet-proof]
Mech. impact protection code	IK08 [5 J vandal-protected]
Standard tilt angle posttop	0°
Standard tilt angle side entry	0°
Optical cover type	Flat glass
Net Weight (Piece)	5.000 kg

### Emergency Operation

Central Emergency	No
Emergency lighting	-

### Approval and Application

Flammability mark	For mounting on normally flammable surfaces
CE mark	Yes
ENEC mark	ENEC mark

Photobiological risk	Photobiological risk group 1 @200mm to EN62778
EU RoHS compliant	Yes
Performance ambient temperature Tq	25 °C
Ambient temperature range	-40 to +45 °C

### Initial Performance (IEC Compliant)

Luminous flux tolerance	+/-7%
Initial chromaticity	(0.382, 0.379) SDCM <5
Power consumption tolerance	+/-10%
Init. Color Rendering Index Tolerance	+/-2

### Over Time Performance (IEC Compliant)

Control gear failure rate at median useful life 100000 h	10 %
Lumen maintenance (EN-IEC 62722-2-1) at median useful life* 100000 h	L80

### Sustainability Data

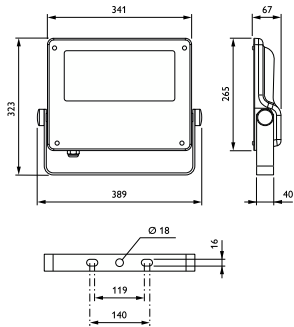
Sustainability rating	Unclassified
Embedded carbon (A1-A3)	63.5 kg CO <sub>2</sub> e
Product non-virgin material ratio	4.84 %
Recyclable content ratio of the finished product	50.4 %
GWP total B6 (kg CO <sub>2</sub> eq) Declared Unit	Please calculate using your local energy mix value: Power Declared Unit (kW) * Service life (hrs) Declared Unit * Energy mix (kg CO <sub>2</sub> eq / kWh)
GWP total B6 (kg CO <sub>2</sub> eq) Functional Unit	Please calculate using your local energy mix value: Power Declared Unit (kW) * 1000 (lm) / lumen output (lm) Declared Unit * 35000 (hrs) * Energy mix (kg CO <sub>2</sub> eq / kWh)

### Product Data

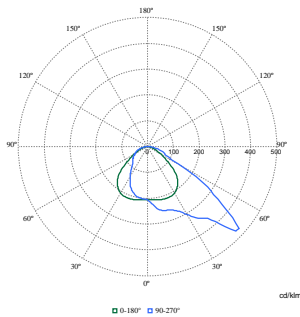
Order product name	BVP125 LED120-45/830 PSU OFA52 ALU C1KC3
Full product name	BVP125 LED120-45/830 PSU OFA52 ALU C1KC3
Full product code	872016979984400
Order code	912300060607
Material Nr. (12NC)	912300060607
Numerator - Quantity Per Pack	1
EAN/UPC - Product/Case	8720169799844
Numerator - Packs per outer box	1
EAN/UPC - Case	8720169799844
Product family code	BVP125 [Coreline tempo medium]

# Coreline tempo medium

## Dimensional drawing



## Photometric data



Polar Normal (separate) - BVP125I - 912300060607

