



Coreline tempo medium

BVP125 LED80-4S/840 PSU OFA52 ALU C1KC3

Coreline tempo medium, Floodlight, 60 W, 8000 lm, 4000 K, CRI80, Asymmetrical, IP66

Coreline tempo medium delivers on the Coreline promise of innovative, easy to use and high quality floodlighting. A limited range of options makes it easy to find the best lux-for-lux replacement for conventional technologies and direct replacement of 100W and 150W HID lamps . The CoreLine tempo medium offers lumen packages for many different application areas as well as a choice of high-performance asymmetrical and symmetrical optics. Installing the LED flood lighting is made easy thanks to the U-shaped universal mounting bracket and the external quick 3-poles connector. It is an ideal floodlighting solution for outdoor environments such as industrial/commercial areas, parking lots, etc.

Product data

General Information	
Lamp family code	LED80-4S [LED module, system flux 8000 lm]
Number of gear units	1 unit
Driver included	Yes
Light source engine type	LED
Service tag	Yes
Value ladder	Performance
Serviceability class	Class C, luminaire without serviceable parts, not serviceable
Warranty period	5 years

Sustainability rating	Unclassified
Light Technical	
Upward light output ratio	0
Luminous Flux	8,000 lm
Correlated Color Temperature (Nom)	4000 K
Luminous Efficacy (rated) (Nom)	136 lm/W
Color rendering index (CRI)	80
Light source color	840 neutral white
Luminaire light beam spread	9° - 41° x 102°
Optic type outdoor	Asymmetrical

Coreline tempo medium

Effective projected area	0.09 m ²
--------------------------	---------------------

Sustainability Data

Embedded carbon (A1-A3)	63.5 kg CO ₂ e
Recyclable content ratio of the finished product	50.4 %
Product non-virgin material ratio	4.84 %
GWP total B6 (kg CO ₂ eq) Declared Unit	Please calculate using your local energy mix value: Power Declared Unit (kW) * Service life (hrs) Declared Unit * Energy mix (kg CO ₂ eq / kWh)
GWP total B6 (kg CO ₂ eq) Functional Unit	Please calculate using your local energy mix value: Power Declared Unit (kW) * 1000 (lm) / lumen output (lm) Declared Unit * 35000 (hrs) * Energy mix (kg CO ₂ eq / kWh)

Operating and Electrical

Input Voltage	220 to 240 V
Line Frequency	50 to 60 Hz
Inrush current	53 A
Inrush time	0.3 ms
Power Consumption	60 W
Power Factor (Fraction)	0.95
Connection	External connector
Cable	Cable 1.0 m with plug Wieland/Adels compatible 3-pole
Number of products on MCB of 16 A type B	10
Protection class IEC	Safety class I
Surge Protection (Common/Differential)	Surge protection level until 6 kV differential mode and 8 kV common mode

Controls and Dimming

Dimmable	No
Driver/power unit/transformer	Power supply unit (On/Off)
Constant light output	No

Mechanical and Housing

Housing Material	Aluminum
Reflector material	-
Optic material	Polycarbonate
Optical cover material	Glass
Fixation material	Aluminum
Housing Color	Grey
Mounting device	Wall-mounting bracket
Optical cover shape	Flat
Optical cover finish	Clear
Overall length	340.5 mm
Overall width	265 mm
Overall height	67.4 mm

Dimensions (Height x Width x Depth)	67 x 265 x 341 mm
Ingress protection code	IP66 [Dust penetration-protected, jet-proof]
Mech. impact protection code	IK08 [5 J vandal-protected]
Standard tilt angle posttop	0°
Standard tilt angle side entry	0°
Optical cover type	Flat glass
Net Weight (Piece)	5.000 kg

Emergency Operation

Central Emergency	No
Emergency lighting	-

Approval and Application

Flammability mark	For mounting on normally flammable surfaces
CE mark	Yes
ENEC mark	ENEC mark
Photobiological risk	Photobiological risk group 1 @200mm to EN62778
EU RoHS compliant	Yes
Performance ambient temperature Tq	25 °C
Ambient temperature range	-40 to +45 °C

Initial Performance (IEC Compliant)

Luminous flux tolerance	+/-7%
Initial chromaticity	(0.434, 0.403) SDCM <5
Power consumption tolerance	+/-10%
Init. Color Rendering Index Tolerance	+/-2

Over Time Performance (IEC Compliant)

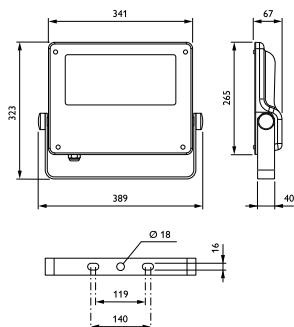
Control gear failure rate at median useful life 100000 h	10 %
Lumen maintenance (EN-IEC 62722-2-1) at median useful life* 100000 h	L80

Product Data

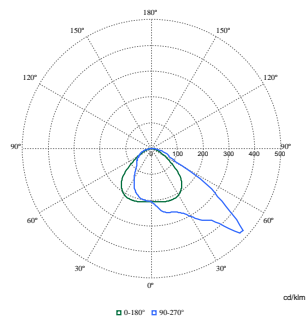
Order product name	BVP125 LED80-4S/840 PSU OFA52 ALU CIKC3
Full product name	BVP125 LED80-4S/840 PSU OFA52 ALU CIKC3
Full product code	872016979980600
Order code	79980600
Material Nr. (12NC)	912300060603
Numerator - Quantity Per Pack	1
EAN/UPC - Product/Case	8720169799806
Numerator - Packs per outer box	1
EAN/UPC - Case	8720169799806
Product family code	BVP125 [Coreline tempo medium]

Coreline tempo medium

Dimensional drawing



Photometric data



Polar Normal (separate) - BVP125I - 912300060603

