



Coreline tempo medium

BVP125 LED120-4S/740 PSU S ALU C1KC3

Coreline tempo medium, Floodlight, 90 W, 12000 lm, 4000 K, CRI70, Symmetrical, IP66

Floodlight, Aluminum, Grey, Power supply unit (On/Off), 12000 lm, 90 W, 137 lm/W, 4000 K, (0.382, 0.379) SDCM <5, CRI70, Symmetrical, IP66 | Dust penetration-protected, jet-proof, IK08 | 5 J vandal-protected, Safety class I, Surge protection level until 6 kV differential mode and 8 kV common mode, Cable 1.0 m with plug Wieland/Adels compatible 3-pole, External connector

Product data

General Information		Operating and Electrical	
Lamp family code	LED120-4S [LED module, system flux 12000 lm]	Luminous Efficacy (rated) (Nom)	137 lm/W
Light source replaceable	No	Color rendering index (CRI)	70
Number of gear units	1 unit	Light source color	740 neutral white
Driver included	Yes	Luminaire light beam spread	69° x 25°
Light source engine type	LED	Optic type outdoor	Symmetrical
Service tag	Yes	Effective projected area	0.09 m ²
Lighting Technology	LED	Input Voltage	220 to 240 V
Value ladder	Performance	Line Frequency	50 to 60 Hz
Warranty period	5 years	Inrush current	53 A
Upward light output ratio	0	Inrush time	0.3 ms
Luminous Flux	12,000 lm	Power Consumption	90 W
Correlated Color Temperature (Nom)	4000 K	Power Factor (Fraction)	0.98
		Connection	External connector

Coreline tempo medium

Cable	Cable 1.0 m with plug Wieland/Adels compatible 3-pole
Number of products on MCB of 16 A type B	8
Protection class IEC	Safety class I
Surge Protection (Common/Differential)	Surge protection level until 6 kV differential mode and 8 kV common mode
Total harmonic distortion	7.8 %

Controls and Dimming

Dimmable	No
Driver/power unit/transformer	Power supply unit (On/Off)
Constant light output	No

Mechanical and Housing

Housing Material	Aluminum
Reflector material	-
Optic material	Polycarbonate
Optical cover material	Glass
Fixation material	Aluminum
Housing Color	Grey
Mounting device	Wall-mounting bracket
Optical cover shape	Flat
Optical cover finish	Clear
Overall length	340.5 mm
Overall width	265 mm
Overall height	67.4 mm
Dimensions (Height x Width x Depth)	67 x 265 x 341 mm
Ingress protection code	IP66 [Dust penetration-protected, jet-proof]
Mech. impact protection code	IK08 [5 J vandal-protected]
Standard tilt angle posttop	0°
Standard tilt angle side entry	0°
Optical cover type	Flat glass
Net Weight (Piece)	5.000 kg

Emergency Operation

Central Emergency	No
-------------------	----

Approval and Application

Flammability mark	For mounting on normally flammable surfaces
CE mark	Yes
ENEC mark	ENEC mark
Photobiological risk	Photobiological risk group 1 @200mm to EN62778
EU RoHS compliant	Yes
Performance ambient temperature Tq	25 °C
Remarks	*-Per Lighting Europe guidance paper "Evaluating performance of LED based luminaires - January 2018": statistically there is no relevant difference in lumen maintenance between B50 and for example

	B10. Therefore, the median useful life (B50) value also represents the B10 value. * At extreme ambient temperatures the luminaire might automatically dim down to protect components
--	--

Ambient temperature range	-40 to +45 °C
---------------------------	---------------

Initial Performance (IEC Compliant)

Luminous flux tolerance	+/-7%
Initial chromaticity	(0.382, 0.379) SDCM <5
Power consumption tolerance	+/-10%
Init. Color Rendering Index Tolerance	+/-2
Standard Deviation of Colour Matching (McAdam ellipse)	SDCM≤5

Over Time Performance (IEC Compliant)

Control gear failure rate at median useful life 75000 h	10 %
Control gear failure rate at median useful life 100000 h	10 %
Lumen maintenance (EN-IEC 62722-2-1) at median useful life* 75000 h	L80
Lumen maintenance (EN-IEC 62722-2-1) at median useful life* 100000 h	L90

Sustainability Data

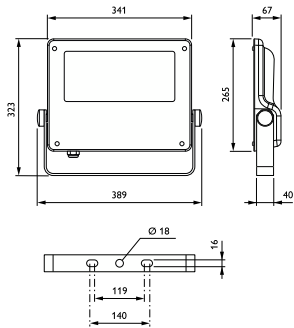
Sustainability rating	Unclassified
Repair class	Repair Class D, this product is not designed to be repaired.
Embedded carbon (A1-A3)	63.5 kg CO ₂ e
Product non-virgin material ratio	4.84 %
Recyclable content ratio of the finished product	50.4 %
GWP total B6 (kg CO ₂ eq) Declared Unit	Please calculate using your local energy mix value: Power Declared Unit (kW) * Service life (hrs) Declared Unit * Energy mix (kg CO ₂ eq / kWh)
GWP total B6 (kg CO ₂ eq) Functional Unit	Please calculate using your local energy mix value: Power Declared Unit (kW) * 1000 (lm) / lumen output (lm) Declared Unit * 35000 (hrs) * Energy mix (kg CO ₂ eq / kWh)
Non-virgin material ratio of the packaging	Cardboard > 80% recycled Plastic >35% recycled
Packaging Recyclable content ratio	Cardboard recycling rate > 80% Plastic recycling rate > 40%
Packaging Material	Cardboard Plastic
Product Data	
Order product name	BVP125 LED120-4S/740 PSU S ALU C1KC3
Full product name	BVP125 LED120-4S/740 PSU S ALU C1KC3
Full product code	871869945589700
Order code	912300024003

Coreline tempo medium

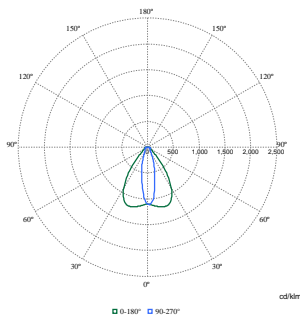
Material Nr. (12NC)	912300024003
Numerator - Quantity Per Pack	1
EAN/UPC - Product/Case	8718699455897
Numerator - Packs per outer box	1

EAN/UPC - Case	8718699455897
Product family code	BVP125 [Coreline tempo medium]

Dimensional drawing



Photometric data



Polar Normal (separate) - BVP125I - 912300024003

