



# Coreline tempo medium

## BVP125 LED120-4S/740 PSU OFA52 ALU C1KC3

Coreline tempo medium, Floodlight, 90 W, 12000 lm, 4000 K, CRI70, Asymmetrical, IP66

Coreline tempo medium delivers on the Coreline promise of innovative, easy to use and high quality floodlighting. A limited range of options makes it easy to find the best lux-for-lux replacement for conventional technologies and direct replacement of 100W and 150W HID lamps. The CoreLine tempo medium offers lumen packages for many different application areas as well as a choice of high-performance asymmetrical and symmetrical optics. Installing the LED flood lighting is made easy thanks to the U-shaped universal mounting bracket and the external quick 3-poles connector. It is an ideal floodlighting solution for outdoor environments such as industrial/commercial areas, parking lots, etc.

### Product data

General Information		Warranty period	
Lamp family code	LED120-4S [LED module, system flux 12000 lm]		5 years
Light source replaceable	No	Sustainability rating	Unclassified
Number of gear units	1 unit	Light Technical	
Driver included	Yes	Upward light output ratio	0
Light source engine type	LED	Luminous Flux	12,000 lm
Service tag	Yes	Correlated Color Temperature (Nom)	4000 K
Lighting Technology	LED	Luminous Efficacy (rated) (Nom)	134 lm/W
Value ladder	Performance	Color rendering index (CRI)	70
Serviceability class	Class C, luminaire without serviceable parts, not serviceable	Light source color	740 neutral white
		Luminaire light beam spread	9° - 41° x 102°
		Optic type outdoor	Asymmetrical

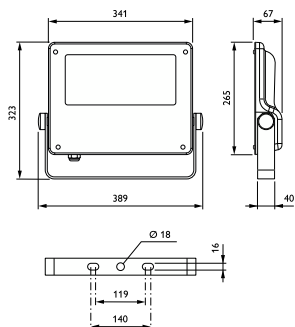
## Coreline tempo medium

Effective projected area	0.09 m <sup>2</sup>
<b>Operating and Electrical</b>	
Input Voltage	220 to 240 V
Line Frequency	50 to 60 Hz
Inrush current	53 A
Inrush time	0.3 ms
Power Consumption	90 W
Power Factor (Fraction)	0.98
Connection	External connector
Cable	Cable 1.0 m with plug Wieland/Adels compatible 3-pole
Number of products on MCB of 16 A type B	8
Protection class IEC	Safety class I
Surge Protection (Common/Differential)	Surge protection level until 6 kV differential mode and 8 kV common mode
Total harmonic distortion	7.8 %
<b>Controls and Dimming</b>	
Dimmable	No
Driver/power unit/transformer	Power supply unit (On/Off)
Constant light output	No
<b>Mechanical and Housing</b>	
Housing Material	Aluminum
Reflector material	-
Optic material	Polycarbonate
Optical cover material	Glass
Fixation material	Aluminum
Housing Color	Grey
Mounting device	Wall-mounting bracket
Optical cover shape	Flat
Optical cover finish	Clear
Overall length	340.5 mm
Overall width	265 mm
Overall height	67.4 mm
Dimensions (Height x Width x Depth)	67 x 265 x 341 mm
Ingress protection code	IP66 [Dust penetration-protected, jet-proof]
Mech. impact protection code	IK08 [5 J vandal-protected]
Standard tilt angle posttop	0°
Standard tilt angle side entry	0°
Optical cover type	Flat glass
Net Weight (Piece)	5.000 kg
<b>Emergency Operation</b>	
Central Emergency	No
<b>Approval and Application</b>	
Flammability mark	For mounting on normally flammable surfaces

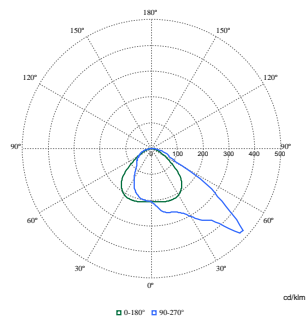
CE mark	Yes
ENEC mark	ENEC mark
Photobiological risk	Photobiological risk group 1 @200mm to EN62778
EU RoHS compliant	Yes
Performance ambient temperature Tq	25 °C
Remarks	*-Per Lighting Europe guidance paper "Evaluating performance of LED based luminaires - January 2018": statistically there is no relevant difference in lumen maintenance between B50 and for example B10. Therefore, the median useful life (B50) value also represents the B10 value. * At extreme ambient temperatures the luminaire might automatically dim down to protect components
Ambient temperature range	-40 to +45 °C
<b>Initial Performance (IEC Compliant)</b>	
Luminous flux tolerance	+/-7%
Initial chromaticity	(0.382, 0.379) SDCM <5
Power consumption tolerance	+/-10%
Init. Color Rendering Index Tolerance	+/-2
Standard Deviation of Colour Matching (McAdam ellipse)	SDCM≤5
<b>Over Time Performance (IEC Compliant)</b>	
Control gear failure rate at median useful life 75000 h	10 %
Control gear failure rate at median useful life 100000 h	10 %
Lumen maintenance (EN-IEC 62722-2-1) at median useful life* 75000 h	L80
Lumen maintenance (EN-IEC 62722-2-1) at median useful life* 100000 h	L90
<b>Product Data</b>	
Order product name	BVP125 LED120-4S/740 PSU OFA52 ALU C1KC3
Full product name	BVP125 LED120-4S/740 PSU OFA52 ALU C1KC3
Full product code	871869945587300
Order code	912300024001
Material Nr. (12NC)	912300024001
Numerator - Quantity Per Pack	1
EAN/UPC - Product/Case	8718699455873
Numerator - Packs per outer box	1
EAN/UPC - Case	8718699455873
Product family code	BVP125 [Coreline tempo medium]

# Coreline tempo medium

## Dimensional drawing



## Photometric data



Polar Normal (separate) - BVP125I - 912300024001

