



# GreenSpace Slim Downlight G2

## DN150X LED21S/830\_840 WIA WH G2

GreenSpace Slim Downlight G2, 17.5 W, 2100 lm, 3000 K, 4000 K, Wireless, Beam angle 90°, Symmetrical, Textured, IP20(IP44 front)

GreenSpace Slim downlight is ultra-thin product for general lighting applications with limited build-in height, which is suitable for a series of lighting applications in general indoor areas. Available in a wide variety of lumen packs, cut out size, selectable CCT with less SKUs and dimming option.

### Product data

General Information		Optic type	
Number of gear units	1 unit	Beam angle 90° Symmetrical	
Gear	EB [Electronic]	Luminaire light beam spread	
Driver included	Yes	90°	
Light source engine type	LED	Unified glare rating CEN	
Warranty period	5 years	27	
Light Technical		Operating and Electrical	
Luminous Flux	2,100 lm	Input Voltage	220 to 240 V
Correlated Color Temperature (Nom)	3000 4000 K	Line Frequency	50 or 60 Hz
Luminous Efficacy (rated) (Nom)	120 lm/W	Inrush current	4.9 A
Color rendering index (CRI)	≥80	Inrush time	0.056 ms
Number of light sources	1	Power Consumption	17.5 W
Beam angle of light source	90 degree(s)	Power Factor (Fraction)	0.9
Light source color	830 warm white, 840 neutral white	Connection	Push-in connector 2-pole
		Cable	-
		Number of products on MCB of 16 A type B	24
		Suitable for random switching	No

# GreenSpace Slim Downlight G2

Protection class IEC	Safety class II
----------------------	-----------------

## Controls and Dimming

Dimmable	Wireless Dim
Control interface	Wireless
Maximum dim level	1%

## Mechanical and Housing

Housing Material	Aluminum die-cast
Reflector material	Polycarbonate
Optic material	Polymethyl methacrylate
Optical cover material	Polycarbonate
Housing Color	White RAL 9003
Mounting device	Recessed mounting box round
Optical cover finish	Textured
Overall height	24 mm
Overall diameter	218 mm
Ingress protection code	IP20(IP44 front)
Mech. impact protection code	IK03 [0.3 J]
Optical cover type	Microprismatic cover
Net Weight (Piece)	0.440 kg

## Approval and Application

Glow-wire test	Temperature 650 °C, duration 30 s
Flammability mark	For mounting on normally flammable surfaces

CE mark	Yes
ENEC mark	-
Photobiological risk	Photobiological risk group 0 @200mm to EN62778
Photobiological risk specification	0.2 m
EU RoHS compliant	Yes
Performance ambient temperature Tq	25 °C
Ambient temperature range	-20 °C to 40 °C

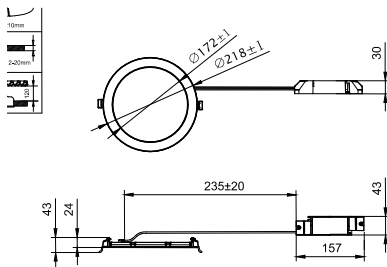
## Initial Performance (IEC Compliant)

Luminous flux tolerance	-10%,+15%
Initial chromaticity	(0.43,0.40) SDCM<3; (0.38,0.38) SDCM<3
Power consumption tolerance	+/-10%

## Product Data

Order product name	DN150X LED21S/830_840 WIA WH G2
Full product name	DN150X LED21S/830_840 WIA WH G2
Full product code	872110331711799
Order code	31711799
Material Nr. (12NC)	911401895887
Numerator - Quantity Per Pack	1
EAN/UPC - Product/Case	8721103317117
Numerator - Packs per outer box	20
EAN/UPC - Case	8721103317261

## Dimensional drawing



DN150X LED21S/830\_840 WIA WH G2

## GreenSpace Slim Downlight G2

