



GreenSpace Slim Downlight G2

DN150X LED11S/830_840 WIA WH G2

GreenSpace Slim Downlight G2, 10 W, 1150 lm, 3000 K, 4000 K, Wireless, Beam angle 90°, Symmetrical, Textured, IP20(IP44 front)

GreenSpace Slim downlight is ultra-thin product for general lighting applications with limited build-in height, which is suitable for a series of lighting applications in general indoor areas. Available in a wide variety of lumen packs, cut out size, selectable CCT with less SKUs and dimming option.

Product data

General Information		Optic type	
Number of gear units	1 unit	Beam angle	90° Symmetrical
Gear	EB [Electronic]	Luminaire light beam spread	90°
Driver included	Yes	Unified glare rating CEN	27
Light source engine type	LED	Operating and Electrical	
Warranty period	5 years	Input Voltage	220 to 240 V
		Line Frequency	50 or 60 Hz
		Inrush current	4.9 A
		Inrush time	0.056 ms
		Power Consumption	10 W
		Power Factor (Fraction)	0.9
		Connection	Push-in connector 2-pole
		Cable	-
		Number of products on MCB of 16 A type B	24
		Suitable for random switching	No
Light Technical			
Luminous Flux	1,150 lm		
Correlated Color Temperature (Nom)	3000 4000 K		
Luminous Efficacy (rated) (Nom)	115 lm/W		
Color rendering index (CRI)	≥80		
Number of light sources	1		
Beam angle of light source	90 degree(s)		
Light source color	830 warm white, 840 neutral white		

GreenSpace Slim Downlight G2

Protection class IEC	Safety class II
----------------------	-----------------

Controls and Dimming

Dimmable	Wireless Dim
Control interface	Wireless
Maximum dim level	1%

Mechanical and Housing

Housing Material	Aluminum die-cast
Reflector material	Polycarbonate
Optic material	Polymethyl methacrylate
Optical cover material	Polycarbonate
Housing Color	White RAL 9003
Mounting device	Recessed mounting box round
Optical cover finish	Textured
Overall height	24 mm
Overall diameter	170 mm
Ingress protection code	IP20(IP44 front)
Mech. impact protection code	IK03 [0.3 J]
Optical cover type	Microprismatic cover
Net Weight (Piece)	0.310 kg

Approval and Application

Glow-wire test	Temperature 650 °C, duration 30 s
Flammability mark	For mounting on normally flammable surfaces

CE mark	Yes
ENEC mark	-
Photobiological risk	Photobiological risk group 0 @200mm to EN62778
Photobiological risk specification	0.2 m
EU RoHS compliant	Yes
Performance ambient temperature Tq	25 °C
Ambient temperature range	-20 °C to 40 °C

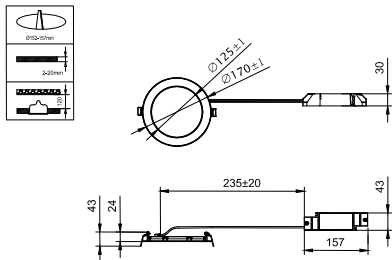
Initial Performance (IEC Compliant)

Luminous flux tolerance	-10%,+15%
Initial chromaticity	(0.43,0.40) SDCM<3; (0.38,0.38) SDCM<3
Power consumption tolerance	+/-10%

Product Data

Order product name	DN150X LED11S/830_840 WIA WH G2
Full product name	DN150X LED11S/830_840 WIA WH G2
Full product code	872110331710099
Order code	31710099
Material Nr. (12NC)	911401895787
Numerator - Quantity Per Pack	1
EAN/UPC - Product/Case	8721103317100
Numerator - Packs per outer box	24
EAN/UPC - Case	8721103317254

Dimensional drawing



DN150X LED11S/830_840 WIA WH G2

GreenSpace Slim Downlight G2

