



# GreenSpace Slim Downlight G2

## DN150B LED21S/830\_840 PSU WH G2

GreenSpace Slim Downlight G2, 16.5 W, 2100 lm, 3000 K, 4000 K, Beam angle 90°, Symmetrical, Textured, IP20(IP44 front)

GreenSpace Slim downlight is ultra-thin product for general lighting applications with limited build-in height, which is suitable for a series of lighting applications in general indoor areas. Available in a wide variety of lumen packs, cut out size, selectable CCT with less SKUs and dimming option.

### Product data

General Information		Unified glare rating CEN	
Number of gear units	1 unit		27
Gear	EB [Electronic]	Operating and Electrical	
Driver included	Yes	Input Voltage	220 to 240 V
Light source engine type	LED	Line Frequency	50 or 60 Hz
Warranty period	5 years	Inrush current	13.7 A
Light Technical		Inrush time	0.194 ms
Luminous Flux	2.100 lm	Power Consumption	16.5 W
Correlated Color Temperature (Nom)	3000 4000 K	Power Factor (Fraction)	0.9
Luminous Efficacy (rated) (Nom)	125 lm/W	Connection	Push-in connector 2-pole
Color rendering index (CRI)	≥80	Cable	-
Number of light sources	1	Number of products on MCB of 16 A type B	43
Beam angle of light source	90 degree(s)	Suitable for random switching	No
Light source color	830 warm white, 840 neutral white	Protection class IEC	Safety class II
Optic type	Beam angle 90° Symmetrical	Controls and Dimming	
Luminaire light beam spread	90°	Dimmable	-

## GreenSpace Slim Downlight G2

Control interface	-
Maximum dim level	Not applicable

### Mechanical and Housing

Housing Material	Aluminum die-cast
Reflector material	Polycarbonate
Optic material	Polymethyl methacrylate
Optical cover material	Polycarbonate
Housing Color	White RAL 9003
Mounting device	Recessed mounting box round
Optical cover finish	Textured
Overall height	24 mm
Overall diameter	218 mm
Ingress protection code	IP20(IP44 front)
Mech. impact protection code	IK03 [0.3 J]
Optical cover type	Microprismatic cover
Net Weight (Piece)	0.370 kg

### Approval and Application

Glow-wire test	Temperature 650 °C, duration 30 s
Flammability mark	For mounting on normally flammable surfaces
CE mark	Yes
ENEC mark	-

Photobiological risk	Photobiological risk group 0 @200mm to EN62778
----------------------	--

Photobiological risk specification	0.2 m
EU RoHS compliant	Yes
Performance ambient temperature Tq	25 °C
Ambient temperature range	-20 °C to 40 °C

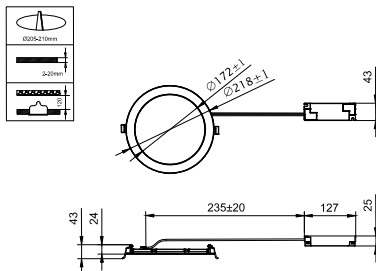
### Initial Performance (IEC Compliant)

Luminous flux tolerance	-10%,+15%
Initial chromaticity	(0.43,0.40) SDCM<3; (0.38,0.38) SDCM<3
Power consumption tolerance	+/-10%

### Product Data

Order product name	DN150B LED21S/830_840 PSU WH G2
Full product name	DN150B LED21S/830_840 PSU WH G2
Full product code	872110331707099
Order code	911401895487
Material Nr. (12NC)	911401895487
Numerator - Quantity Per Pack	1
EAN/UPC - Product/Case	8721103317070
Numerator - Packs per outer box	20
EAN/UPC - Case	8721103317223

## Dimensional drawing



DN150B LED21S/830\_840 PSU WH G2

