



# CoreLine Wall-mounted

## WL140V 40S/827\_830\_840 WIA WH

CoreLine Wall-mounted, All-in, 29 W, 3600 lm, 4050 lm, 2700 K, 3000 K, 4000 K, Wireless, Interact Ready, EL-ready

Whether for a new building or renovation of an existing space, customers want lighting solutions that provide quality of light and substantial energy and maintenance savings. The new CoreLine Wall-mounted range of LED products can be used to replace traditional wall-mounted luminaires incorporating compact fluorescent lamps. The process of selecting, installing and maintaining is so easy – it's a simple switch.

### Warnings and Safety

- For outdoor operations; wall-mounted applications only and all cables should run indoors with a maximum distance of 10 meters

### Product data

General Information		Optic type	
Number of gear units	1 unit	Optic type	Symmetrical
Driver included	Yes	Luminaire light beam spread	120°
Value ladder	Performance	All-in Type	All-in, Multi Color Temperature
Warranty period	5 years	Operating and Electrical	
Light Technical		Input Voltage	220-240 V
Luminous Flux	3,600 4,050 lm	Line Frequency	50 or 60 Hz
Correlated Color Temperature (Nom)	2700 3000 4000 K	Inrush current	5 A
Luminous Efficacy (rated) (Nom)	140 125 lm/W	Inrush time	0.05 ms
Color rendering index (CRI)	>80	Power Consumption	29 W
Light source color	White	Power Factor (Fraction)	0.9
		Connection	2 Push-in connector 3-pole

## CoreLine Wall-mounted

Cable	-
Number of products on MCB of 16 A type B	24
Suitable for random switching	No
Protection class IEC	Safety class II
Total harmonic distortion	20 %

### Controls and Dimming

Dimmable	Yes
Driver/power unit/transformer	Driver
Control interface	Wireless
Constant light output	No
Connectivity	Interact Ready

### Mechanical and Housing

Housing Material	Polycarbonate
Reflector material	-
Optic material	Polymethyl methacrylate
Optical cover material	Polycarbonate
Fixation material	-
Housing Color	White
Optical cover finish	Opal
Overall height	85 mm
Overall diameter	390 mm
Ingress protection code	IP65 [Dust penetration-protected, jet-proof]
Mech. impact protection code	IK10 [20 J vandal-resistant]
Mounting	Ceiling Wall
Net Weight (Piece)	1.290 kg

### Emergency Operation

Central Emergency	No
Emergency lighting	Self-contained emergency lighting is possible when used with a compatible battery kit accessory

### Approval and Application

Glow-wire test	Temperature 650 °C, duration 30 s
Flammability mark	For mounting on normally flammable surfaces
CE mark	Yes
ENEC mark	ENEC mark
EU RoHS compliant	Yes
Performance ambient temperature Tq	25 °C
Stroboscopic effect visibility measure (SVM)	0.4

Ambient temperature range	-20 to +40 °C
---------------------------	---------------

### Initial Performance (IEC Compliant)

Luminous flux tolerance	+/-10%
Initial chromaticity	(0.46,0.42) SDCM<3; (0.43,0.40) SDCM<5; (0.38,0.38) SDCM<3
Power consumption tolerance	+/-10%

### Over Time Performance (IEC Compliant)

Control gear failure rate at median useful life 50000 h	5 %
Lumen maintenance (EN-IEC 62722-2-1) at median useful life* 50000 h	L80

### Sustainability Data

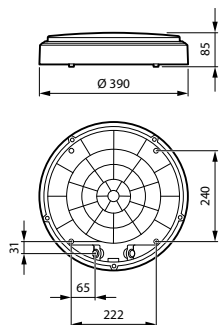
Sustainability rating	Unclassified
Repair class	Repair Class D, this product is not designed to be repaired.
Embedded carbon (A1-A3)	45.2 kg CO <sub>2</sub> e
Product non-virgin material ratio	9.06 %
Recyclable content ratio of the finished product	5.86 %
GWP total B6 (kg CO <sub>2</sub> eq) Declared Unit	Please calculate using your local energy mix value: Power Declared Unit (kW) * Service life (hrs) Declared Unit * Energy mix (kg CO <sub>2</sub> eq / kWh)
GWP total B6 (kg CO <sub>2</sub> eq) Functional Unit	Please calculate using your local energy mix value: Power Declared Unit (kW) * 1000 (lm) / lumen output (lm) Declared Unit * 35000 (hrs) * Energy mix (kg CO <sub>2</sub> eq / kWh)

### Product Data

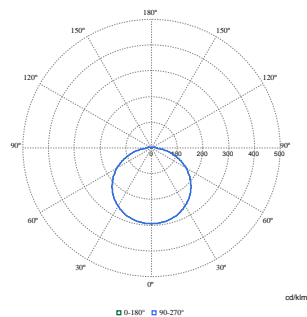
Order product name	WL140V 40S/827_830_840 WIA WH
Full product name	WL140V 40S/827_830_840 WIA WH
Full product code	872110330717099
Order code	30717099
Material Nr. (12NC)	911401874087
Numerator - Quantity Per Pack	1
EAN/UPC - Product/Case	8721103307170
Numerator - Packs per outer box	6
EAN/UPC - Case	8721103307224

# CoreLine Wall-mounted

## Dimensional drawing



## Photometric data



Polar Normal (separate) - 911401874087

