



CoreLine Wall-mounted

WL140V 14_24_40S/827_830_840 PSU MDU WH

CoreLine Wall-mounted, All-in, 30 W, 12 W, 1400 lm, 4050 lm, 2700 K, 3000 K, 4000 K, Sensor-based dim, MDU2, EL-ready

CoreLine wall-mounted solutions deliver on the CoreLine promise of innovative, easy-to install and high-quality luminaires. These circular-shaped, surface-mounted luminaires are suitable for both ceiling and wall installations and are easy to apply in circulation areas such as corridors, hallways and staircases. The modern, unobtrusive design, combined with a homogeneous light distribution, ensures this luminaire will blend into the architecture of most buildings. All-in features provide up to three lumen packages and three color temperature options in one luminaire. Installers can easily fit the luminaire according to the application need on site. And thanks to the push-in connectors, installation of the CoreLine WL140V is fast and straightforward. This family includes Interact ready luminaires with integrated wireless communications, ready for use with Interact gateways, sensors and software.

Warnings and Safety

- For outdoor operations; wall-mounted applications only and all cables should run indoors with a maximum distance of 10 meters

Product data

General Information		Light Technical	
Number of gear units	1 unit	Luminous Flux	1,400 4,050 lm
Driver included	Yes	Correlated Color Temperature (Nom)	2700 3000 4000 K
Value ladder	Performance	Luminous Efficacy (rated) (Nom)	135 120 lm/W
Warranty period	5 years	Color rendering index (CRI)	>80
		Light source color	White
		Optic type	Symmetrical

CoreLine Wall-mounted

Luminaire light beam spread	120°
All-in Type	All-in, Multi Color Temperature All-in, Multi Lumen

Operating and Electrical

Input Voltage	220-240 V
Line Frequency	50 or 60 Hz
Inrush current	14 A
Inrush time	0.007 ms
Power Consumption	30 12 W
Power Factor (Fraction)	0.9
Connection	2 Push-in connector 3-pole
Cable	-
Number of products on MCB of 16 A type B	32
Suitable for random switching	No
Protection class IEC	Safety class II
Total harmonic distortion	20 %

Controls and Dimming

Dimmable	No
Driver/power unit/transformer	Driver
Control interface	Sensor-based dim
Constant light output	No
Embedded control	Programmable movement and light sensor

Mechanical and Housing

Housing Material	Polycarbonate
Reflector material	-
Optic material	Polymethyl methacrylate
Optical cover material	Polycarbonate
Fixation material	-
Housing Color	White
Optical cover finish	Opal
Overall height	85 mm
Overall diameter	390 mm
Ingress protection code	IP65 [Dust penetration-protected, jet-proof]
Mech. impact protection code	IK10 [20 J vandal-resistant]
Mounting	Ceiling Wall
Net Weight (Piece)	1.400 kg

Emergency Operation

Central Emergency	No
Emergency lighting	Self-contained emergency lighting is possible when used with a compatible battery kit accessory

Approval and Application

Glow-wire test	Temperature 650 °C, duration 30 s
Flammability mark	For mounting on normally flammable surfaces
CE mark	Yes
ENEC mark	ENEC mark
EU RoHS compliant	Yes
Performance ambient temperature Tq	25 °C
Stroboscopic effect visibility measure (SVM)	0.4
Ambient temperature range	-20 to +40 °C

Initial Performance (IEC Compliant)

Luminous flux tolerance	+/-10%
Initial chromaticity	(0.46,0.42) SDCM<3; (0.43,0.40) SDCM<5; (0.38,0.38) SDCM<3
Power consumption tolerance	+/-10%

Over Time Performance (IEC Compliant)

Control gear failure rate at median useful life 50000 h	5 %
Lumen maintenance (EN-IEC 62722-2-1) at median useful life* 50000 h	L80

Sustainability Data

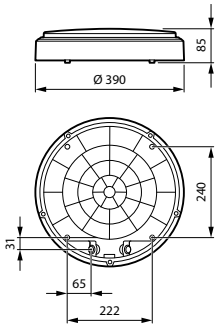
Sustainability rating	Unclassified
Repair class	Repair Class D, this product is not designed to be repaired.

Product Data

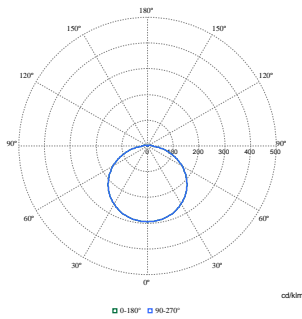
Order product name	WL140V 14_24_40S/827_830_840 PSU MDU WH
Full product name	WL140V 14_24_40S/827_830_840 PSU MDU WH
Full product code	872110330714999
Order code	911401873787
Material Nr. (12NC)	911401873787
Numerator - Quantity Per Pack	1
EAN/UPC - Product/Case	8721103307149
Numerator - Packs per outer box	6
EAN/UPC - Case	8721103307194

CoreLine Wall-mounted

Dimensional drawing



Photometric data



Polar Normal (separate) - 911401873787

