



Solar Panel Sub System

220Wp 42V Monocrystalline PV panel

A Range of Solar panels from 20 W to 325 W specially designed for Philips Solar Street lighting, Flood lighting and Solar Indoor Systems

Product data

General Information	
Value ladder	Value

Operating and Electrical	
Panel type	Mono crystalline
Panel voltage	42 V
Panel peak wattage	220 W

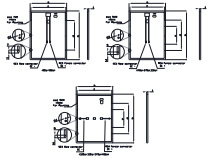
Mechanical and Housing	
Overall length	1,580 mm
Overall width	705 mm
Overall height	3.5 mm
Dimensions (Height x Width x Depth)	4 x 705 x 1580 mm
Net Weight (Piece)	9,500 kg

Approval and Application	
Ambient temperature range	-40 °C to 85 °C

Product Data	
Order product name	220Wp 42V Monocrystalline PV panel
Full product name	220Wp 42V Monocrystalline PV panel
Order code	911401862802
Material Nr. (12NC)	911401862802
Numerator - Quantity Per Pack	1
Numerator - Packs per outer box	31

Solar Panel Sub System

Dimensional drawing



Part No.	Part Name	QTY	Unit	Material	Color	Finish	Notes
1	Panel	1	PCB	FR4	White	Matte	
2	Mounting Bracket	1	Aluminum	6061	Black	Anodized	
3	Mounting Bracket	1	Aluminum	6061	Black	Anodized	
4	Mounting Bracket	1	Aluminum	6061	Black	Anodized	
5	Mounting Bracket	1	Aluminum	6061	Black	Anodized	
6	Mounting Bracket	1	Aluminum	6061	Black	Anodized	
7	Mounting Bracket	1	Aluminum	6061	Black	Anodized	
8	Mounting Bracket	1	Aluminum	6061	Black	Anodized	
9	Mounting Bracket	1	Aluminum	6061	Black	Anodized	
10	Mounting Bracket	1	Aluminum	6061	Black	Anodized	
11	Mounting Bracket	1	Aluminum	6061	Black	Anodized	
12	Mounting Bracket	1	Aluminum	6061	Black	Anodized	
13	Mounting Bracket	1	Aluminum	6061	Black	Anodized	
14	Mounting Bracket	1	Aluminum	6061	Black	Anodized	
15	Mounting Bracket	1	Aluminum	6061	Black	Anodized	
16	Mounting Bracket	1	Aluminum	6061	Black	Anodized	
17	Mounting Bracket	1	Aluminum	6061	Black	Anodized	
18	Mounting Bracket	1	Aluminum	6061	Black	Anodized	
19	Mounting Bracket	1	Aluminum	6061	Black	Anodized	
20	Mounting Bracket	1	Aluminum	6061	Black	Anodized	

