



Solar Panel Sub System

375Wp 34V Monocrystalline PV panel

A Range of Solar panels from 20 W to 325 W specially designed for Philips Solar Street lighting, Flood lighting and Solar Indoor Systems

Product data

General Information	
Value ladder	Value

Operating and Electrical	
Panel type	Mono crystalline
Panel voltage	34 V
Panel peak wattage	375 W

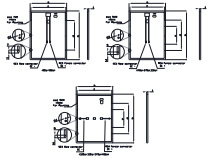
Mechanical and Housing	
Overall length	1,756 mm
Overall width	1,039 mm
Overall height	3.5 mm
Dimensions (Height x Width x Depth)	4 x 1039 x 1756 mm
Net Weight (Piece)	19.490 kg

Approval and Application	
Ambient temperature range	-40 °C to 85 °C

Product Data	
Order product name	375Wp 34V Monocrystalline PV panel
Full product name	375Wp 34V Monocrystalline PV panel
Order code	911401857402
Material Nr. (12NC)	911401857402
Numerator - Quantity Per Pack	1
Numerator - Packs per outer box	31

Solar Panel Sub System

Dimensional drawing



Item	Quantity	Unit	Material	Color	Finish	Notes
1	1	pc	Aluminum	Black	Matte	Mounting bracket
2	1	pc	Aluminum	Black	Matte	Mounting bracket
3	1	pc	Aluminum	Black	Matte	Mounting bracket
4	1	pc	Aluminum	Black	Matte	Mounting bracket
5	1	pc	Aluminum	Black	Matte	Mounting bracket
6	1	pc	Aluminum	Black	Matte	Mounting bracket
7	1	pc	Aluminum	Black	Matte	Mounting bracket
8	1	pc	Aluminum	Black	Matte	Mounting bracket
9	1	pc	Aluminum	Black	Matte	Mounting bracket
10	1	pc	Aluminum	Black	Matte	Mounting bracket
11	1	pc	Aluminum	Black	Matte	Mounting bracket
12	1	pc	Aluminum	Black	Matte	Mounting bracket
13	1	pc	Aluminum	Black	Matte	Mounting bracket
14	1	pc	Aluminum	Black	Matte	Mounting bracket
15	1	pc	Aluminum	Black	Matte	Mounting bracket
16	1	pc	Aluminum	Black	Matte	Mounting bracket
17	1	pc	Aluminum	Black	Matte	Mounting bracket
18	1	pc	Aluminum	Black	Matte	Mounting bracket
19	1	pc	Aluminum	Black	Matte	Mounting bracket
20	1	pc	Aluminum	Black	Matte	Mounting bracket

