



# CoreLine SlimDownlight

## DN145C LED10S/840 PSU II WH

CoreLine SlimDownlight, Surface-mounted, 11 W, D171 mm, 1100 lm, 4000 K, CRI>80, Opal, IP20/44

CoreLine slimdownlight delivers on the CoreLine promise of innovative, easy to use and high-quality indoor LED downlights. CoreLine slimdownlight is an innovative range of recessed and surface-mounted luminaires. It is designed to provide uniform lighting across multiple application areas. With instant energy savings and a longer lifetime, this is an environmentally friendly and cost saving solution. Its MultiColorTemp feature offers a choice of two color temperatures in a single luminaire. This makes it easy to select the right product, gives you the flexibility respond to customer preferences on site, and means fewer product codes on stock. Simple and easy installation means our slim downlight fits the same size cut-out, while the minimal built-in depth of 34mm makes this product an ideal space saving solution, especially for projects with limited fitting space. InterAct Ready option with integrated wireless communications in this family is available, to be used with InterAct gateways, sensors and software.

### Product data

General Information		Mounting	
Lamp family code	LED10S [LED Module, system flux 1000 lm]	Mounting	Surface
Light source replaceable	No	Value ladder	Performance
Number of gear units	1 unit	Serviceability class	Class C, luminaire without serviceable parts, not serviceable
Driver included	Yes	Warranty period	5 years
Service tag	Yes	Sustainability rating	Unclassified
Lighting Technology	LED		

# CoreLine SlimDownlight

Light Technical	
Luminous Flux	1,100 lm
Saturated Red (R9)	<50
Correlated Color Temperature (Nom)	4000 K
Luminous Efficacy (rated) (Nom)	100 lm/W
Color rendering index (CRI)	>80
Number of light sources	1
Beam angle of light source	120 degree(s)
Light source color	840 neutral white
Optic type	Beam angle 90°
Luminaire light beam spread	84°
Unified glare rating CEN	28

Operating and Electrical	
Input Voltage	220 to 240 V
Line Frequency	50 or 60 Hz
Initial CLO power consumption	- W
Average CLO power consumption	- W
Inrush current	10.1 A
Inrush time	0.0022 ms
Power Consumption	11 W
Power Factor (Fraction)	0.9
Connection	Connection unit 2-pole
Cable	-
Number of products on MCB of 16 A type B	47
Suitable for random switching	Yes
Protection class IEC	Safety class II
Total harmonic distortion	20 %

Controls and Dimming	
Dimmable	No
Driver/power unit/transformer	Power supply unit (On/Off)
Control interface	-
Constant light output	No
Maximum dim level	Not applicable

Mechanical and Housing	
Housing Material	Aluminum die cast
Reflector material	-
Optic material	Polymethyl methacrylate
Optical cover material	Polystyrene
Fixation material	-
Housing Color	White
Optical cover finish	Opal
Overall height	50 mm
Overall diameter	168 mm
Ingress protection code	IP20/44 [Finger-protected; wire-protected, splash-proof]
Mech. impact protection code	IK02 [0.2 J standard]
Optical cover type	Opal
Net Weight (Piece)	0.550 kg

Approval and Application	
Glow-wire test	Temperature 650 °C, duration 30 s
Flammability mark	For mounting on normally flammable surfaces
CE mark	Yes
ENEC mark	ENEC mark
Photobiological risk	Photobiological risk group 0 @200mm to EN62778
EU RoHS compliant	Yes
Performance ambient temperature Tq	25 °C
Remarks	*-Per Lighting Europe guidance paper "Evaluating performance of LED based luminaires - January 2018": statistically there is no relevant difference in lumen maintenance between B50 and for example B10. Therefore, the median useful life (B50) value also represents the B10 value.
Flickering value (PstLM) - Flickering value as per EN 61000-3-3	1
Stroboscopic effect visibility measure (SVM)	1.6
Ambient temperature range	0 to +35 °C

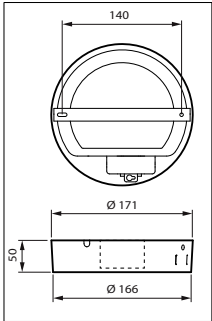
Initial Performance (IEC Compliant)	
Luminous flux tolerance	+/-10%
Initial chromaticity	(0.38212,0.38031) SDCM<3
Power consumption tolerance	+/-10%
Standard Deviation of Colour Matching (McAdam ellipse)	SDCM≤3

Over Time Performance (IEC Compliant)	
Driver failure rate at 5000 h	0.0015 %
Control gear failure rate at median useful life 50000 h	5 %
Lumen maintenance (EN-IEC 62722-2-1) at median useful life* 50000 h	L70

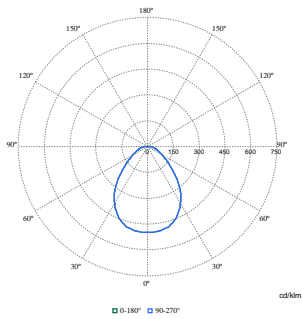
Product Data	
Order product name	DN145C LED10S/840 PSU II WH
Full product name	DN145C LED10S/840 PSU II WH
Full product code	871016333952899
Order code	911401806480
Material Nr. (12NC)	911401806480
Numerator - Quantity Per Pack	1
EAN/UPC - Product/Case	8710163339528
Numerator - Packs per outer box	10
EAN/UPC - Case	8710163339849

# CoreLine SlimDownlight

## Dimensional drawing



## Photometric data



Polar Normal (separate) - null - 911401806480

