



Essential Smartbright LED Batten

BN017C LED60/840 X 2ft

Essential Smartbright LED Batten, 60 W, 6000 lm, 4000 K, Wide beam

Whether for a new building or renovation of an existing space, customers want lighting solutions that provide quality of light and substantial energy and maintenance savings. This new batten range of LED products can be used to replace traditional battens with fluorescent lamps. The process of selecting, installing and maintaining is so easy – it's a simple switch

Product data

General Information		Optic type	
Number of gear units	1 unit		Wide beam
Gear	-	Luminaire light beam spread	110°
Driver included	Yes	Unified glare rating CEN	30
Light source engine type	LED	Operating and Electrical	
Value ladder	Value	Input Voltage	220 V
Warranty period	1 years	Line Frequency	60 Hz
Light Technical		Inrush current	40 A
Luminous Flux	6,000 lm	Inrush time	0.28 ms
Correlated Color Temperature (Nom)	4000 K	Power Consumption	60 W
Luminous Efficacy (rated) (Nom)	100 lm/W	Power Factor (Fraction)	0.5
Color rendering index (CRI)	80	Connection	Flying leads/wires
Number of light sources	1	Cable	Cable 0.3 m without plug
Beam angle of light source	110 degree(s)	Number of products on MCB of 16 A type B	12
Light source color	840 neutral white	Suitable for random switching	Not applicable

Essential Smartbright LED Batten

Protection class IEC	Safety class II
----------------------	-----------------

Controls and Dimming

Dimmable	-
Control interface	-
Maximum dim level	Not applicable

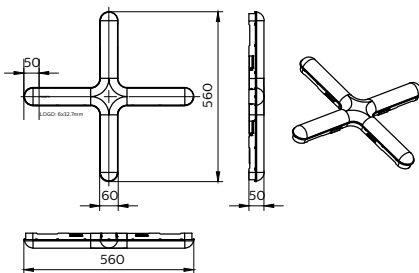
Mechanical and Housing

Housing Material	Polypropylene
Reflector material	-
Optic material	Polypropylene
Optical cover material	Polypropylene
Housing Color	White
Mounting device	Mounting bracket
Optical cover finish	Opal
Overall length	560 mm
Overall width	560 mm
Overall height	50 mm
Dimensions (Height x Width x Depth)	50 x 560 x 560 mm
Ingress protection code	IP20 [No protection]
Mech. impact protection code	IK03 [0.3 J]
Optical cover type	Opal
Net Weight (Piece)	0.430 kg

Approval and Application

Glow-wire test	Temperature 650 °C, duration 30 s
Flammability mark	For mounting on normally flammable surfaces

Dimensional drawing



CE mark	No
ENEC mark	-
Photobiological risk	Photobiological risk group 1 @200mm to EN62778
Photobiological risk specification	0.2 m
EU RoHS compliant	Yes
Performance ambient temperature Tq	25 °C
Ambient temperature range	-20 to +40 °C

Initial Performance (IEC Compliant)

Luminous flux tolerance	+/-10%
Initial chromaticity	(0.38, 0.38) SDCM<7
Power consumption tolerance	+/-10%

Product Data

Order product name	BN017C LED60/840 X 2ft
Full product name	BN017C LED60/840 X 2ft
Full product code	872016975109599
Order code	911401806187
Material Nr. (12NC)	911401806187
Numerator - Quantity Per Pack	1
EAN/UPC - Product/Case	8720169751095
Numerator - Packs per outer box	10
EAN/UPC - Case	8720169751156

Essential Smartbright LED Batten

