

# UniStrip G4

## BCP381 24LED 30K 24V A2 L100

UniStrip G4, 1663 lm, 24 W, Warm white, 16° x 35°, Safety class III, Mounting bracket adjustable

UniStrip G4 is a surface mounted, exterior-rated LED luminaire that is designed for façade and outdoor architectural lighting applications. One family that fits all your needs, wall washing, grazing and also linear flood lighting. The robust mechanical and unique optical designs make it ideal for illuminating buildings facades, bridges, overpasses and any application that requires a linear lighting solution. Available in white, monochromatic colors, RGB, RGBW and tunable white and DMX control option available with up to 8 pixels (8IDs) to give architects and designers the freedom to explore a wide range of concepts and design with no limitations.

### Warnings and Safety

- For outdoor use only

### Product data

General Information		Light source color	
Light source replaceable	No	Light source color	Warm white
Driver included	No	Luminaire light beam spread	16° x 35°
Light source engine type	LED	Operating and Electrical	
Lighting Technology	LED	Input Voltage	24 DC V
Value ladder	Performance	Line Frequency	- Hz
Light Technical		Power Consumption	24 W
Luminous Flux	1,663 lm	Power Factor (Fraction)	1
Correlated Color Temperature (Nom)	3000 K	Connection	2 Push-in connector 2-pole
Luminous Efficacy (rated) (Nom)	69 lm/W	Cable	2 cables 0.15m with connectors 2-pole
Color rendering index (CRI)	80	Protection class IEC	Safety class III

# UniStrip G4

## Controls and Dimming

Dimmable	No
Control interface	-

## Mechanical and Housing

Housing Material	Aluminum extruded
Optic material	Polymethyl methacrylate
Optical cover material	Tempered glass
Fixation material	Aluminum
Housing Color	Dark gray
Mounting device	Mounting bracket adjustable
Optical cover finish	Clear
Overall length	1,000 mm
Overall width	38 mm
Overall height	47 mm
Dimensions (Height x Width x Depth)	47 x 38 x 1000 mm
Ingress protection code	IP66 [Dust penetration-protected, jet-proof]
Mech. impact protection code	IK06 [1 J]
Optical cover type	Clear flat
Net Weight (Piece)	1.600 kg

## Approval and Application

Flammability mark	For mounting on normally flammable surfaces
CE mark	Yes
Ambient temperature range	-40 to +50 °C

## Initial Performance (IEC Compliant)

Luminous flux tolerance	+/-10%
Initial chromaticity	4 SDCM
Power consumption tolerance	+/-10%

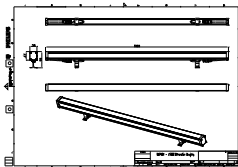
## Sustainability Data

Repair class	Repair Class C, the driver of this luminaire can be replaced by a service technician. Special care is required during disassembly and reassembly, and specific tools may be required. Parts and documentation are available for a period of time.
--------------	---

## Product Data

Order product name	BCP381 24LED 30K 24V A2 L100
Full product name	BCP381 24LED 30K 24V A2 L100
Full product code	872016951982499
Order code	911401738802
Material Nr. (12NC)	911401738802
Numerator - Quantity Per Pack	1
EAN/UPC - Product/Case	8720169519824
Numerator - Packs per outer box	12
EAN/UPC - Case	8720169519824

## Dimensional drawing



## UniStrip G4

