



# Greenspace Flex

## RS378B P24 940 PSU-E NB M70

Greenspace Flex, 24 W, 940 neutral white, 18°, IP20 | Finger-protected

GreenSpace Flex is performance portfolio dedicated to Hospitality segment for GC/GM countries. With modular design concept, the light engines and different trims could have multiply of combination to satisfy diversified customer's requirement.

### Product data

General Information		Power Factor (Fraction)	
Number of gear units	1 unit		0.9
Driver included	Yes	Connection	External connector
Light source engine type	LED	Cable	-
Value ladder	Performance	Number of products on MCB of 16 A type B	-
Warranty period	3 years	Suitable for random switching	No
		Protection class IEC	Safety class II
Light Technical		Controls and Dimming	
Luminous Flux	1,170 lm	Dimmable	No
Correlated Color Temperature (Nom)	4000 K	Driver/power unit/transformer	Electronic transformer
Luminous Efficacy (rated) (Nom)	78 lm/W	Control interface	-
Color rendering index (CRI)	>90	Constant light output	No
Light source color	940 neutral white	Maximum dim level	Not applicable
Luminaire light beam spread	18°		
Operating and Electrical		Mechanical and Housing	
Input Voltage	220-240 V	Housing Material	Aluminum Alloy
Line Frequency	50 or 60 Hz	Optic material	Polymethyl methacrylate
Average CLO power consumption	2085 W	Optical cover material	Polymethyl methacrylate
Power Consumption	24 W	Fixation material	Aluminum
		Housing Color	Grey

# Greenspace Flex

Optical cover finish	Opal
Overall height	90 mm
Overall diameter	70 mm
Ingress protection code	IP20 [Finger-protected]
Mech. impact protection code	IK04 [0.5 J standard plus]
Optical cover type	PMMA
Net Weight (Piece)	0.470 kg

## Approval and Application

Glow-wire test	Temperature 600 °C, duration 30 s
CE mark	Yes
EU RoHS compliant	Yes
Ambient temperature range	-20 to +45 °C

## Initial Performance (IEC Compliant)

Luminous flux tolerance	-10% / +10%
-------------------------	-------------

Initial chromaticity	SDCM<3
Power consumption tolerance	+/-10%

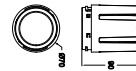
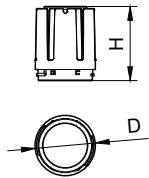
## Over Time Performance (IEC Compliant)

Median useful life L80B50	50,000 hour(s)
---------------------------	----------------

## Product Data

Order product name	RS378B P24 940 PSU-E NB M70
Full product name	RS378B P24 940 PSU-E NB M70
Full product code	911401721452
Order code	911401721452
Material Nr. (12NC)	911401721452
Numerator - Quantity Per Pack	1
Numerator - Packs per outer box	36

## Dimensional drawing



Modular Type	D, mm	H, mm
RS378B P6/P11 M55	55	49
RS378B P15 M55	55	49
RS378B P24 M70	70	90
RS378B P33 M87	87	107
RS378B P42 M102	102	116

