



# Greenspace Flex

## RS378B P6 927 PSU-E WB M55

Greenspace Flex, 6 W, 927 warm white, 32°, IP20 | Finger-protected

GreenSpace Flex is performance portfolio dedicated to Hospitality segment for GC/GM countries. With modular design concept, the light engines and different trims could have multiply of combination to satisfy diversified customer's requirement.

### Product data

General Information	
Number of gear units	1 unit
Driver included	Yes
Light source engine type	LED
Value ladder	Performance
Warranty period	3 years
Light Technical	
Luminous Flux	3,864 lm
Correlated Color Temperature (Nom)	2700 K
Luminous Efficacy (rated) (Nom)	92 lm/W
Color rendering index (CRI)	>90
Beam angle of light source	- degree(s)
Light source color	927 warm white
Optic type	-
Luminaire light beam spread	32°
Operating and Electrical	
Input Voltage	220-240 V
Line Frequency	50 or 60 Hz

Average CLO power consumption	365 W
Power Consumption	6 W
Power Factor (Fraction)	0.9
Connection	External connector
Cable	-
Number of products on MCB of 16 A type B	-
Suitable for random switching	No
Protection class IEC	Safety class II
Controls and Dimming	
Dimmable	No
Driver/power unit/transformer	Electronic transformer
Control interface	-
Constant light output	No
Maximum dim level	Not applicable
Mechanical and Housing	
Housing Material	Aluminum Alloy
Reflector material	-
Optic material	Polymethyl methacrylate

## Greenspace Flex

Optical cover material	Polymethyl methacrylate
Fixation material	Aluminum
Housing Color	Grey
Optical cover finish	Opal
Overall height	49 mm
Overall diameter	55 mm
Ingress protection code	IP20 [Finger-protected]
Mech. impact protection code	IK04 [0.5 J standard plus]
Optical cover type	PMMA
Net Weight (Piece)	0.170 kg

### Approval and Application

Glow-wire test	Temperature 600 °C, duration 30 s
Flammability mark	-
CE mark	Yes
ENEC mark	-
EU RoHS compliant	Yes
Ambient temperature range	-20 to +45 °C

### Initial Performance (IEC Compliant)

Luminous flux tolerance	-10% / +10%
-------------------------	-------------

Initial chromaticity	SDCM<3
Power consumption tolerance	+/-10%

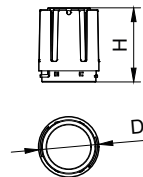
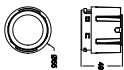
### Over Time Performance (IEC Compliant)

Median useful life L80B50	50,000 hour(s)
---------------------------	----------------

### Product Data

Order product name	RS378B P6 927 PSU-E WB M55
Full product name	RS378B P6 927 PSU-E WB M55
Full product code	692382864989099
Order code	911401720952
Material Nr. (12NC)	911401720952
Numerator - Quantity Per Pack	1
EAN/UPC - Product/Case	6923828649890
Numerator - Packs per outer box	48
EAN/UPC - Case	6923828652302

## Dimensional drawing



Modular Type	D, mm	H, mm
RS378B P6/P11 M55	55	49
RS378B P15 M55	55	49
RS378B P24 M70	70	90
RS378B P33 M87	87	107
RS378B P42 M102	102	116

