



Smart Post-top G3

BGP161 LED2500/NW PSU 220-240V 7043 IN

Smart Post-top G3, 2500 lm, 29 W, Neutral white, Symmetrical, Safety class I, Post-top for diameter 60 mm

Smart Post Top G3 inherits the classic look and style of the previous generation with improved system efficacy and light quality. The Smart Post Top G3 optimized optical design increases both horizontal and vertical uniformity. The highly efficient thermal system design ensures maximum heat transfer and longer LED service life. This reliable luminaire system operates well in both low and high temperature environments. It offers more than 11 years expected life, reducing maintenance frequency and cost (based on a 50,000 hour rated life and 12 hours operation per day). It provides a comfortable and safe atmosphere to gardens, residential areas, courtyards, side streets, squares, parks & playgrounds.

Product data

General Information		Color rendering index (CRI)	
Lamp family code	-		70
Light source replaceable	Yes	Light source color	Neutral white
Number of gear units	1 unit	Luminaire light beam spread	-
Driver included	Yes	Optic type outdoor	Symmetrical
Light source engine type	LED	Operating and Electrical	
Value ladder	Performance	Input Voltage	220 to 240 V
Warranty period	3 years	Line Frequency	50 to 60 Hz
Light Technical		Inrush current	2.1 A
Upward light output ratio	0	Inrush time	22.3 ms
Luminous Flux	2,500 lm	Power Consumption	29 W
Correlated Color Temperature (Nom)	4000 K	Power Factor (Fraction)	0.9
Luminous Efficacy (rated) (Nom)	86.21 lm/W	Connection	Flying leads/wires
		Cable	Cable 0.45 m without plug

Smart Post-top G3

Number of products on MCB of 16 A type B -	
Protection class IEC	Safety class I
Surge Protection (Common/Differential)	4/2 kV kV
Controls and Dimming	
Dimmable	No
Driver/power unit/transformer	Power supply unit (On/Off)
Control interface	-
Constant light output	No
Maximum dim level	Not applicable
Mechanical and Housing	
Housing Material	Aluminum die cast
Reflector material	Acrylate
Optic material	Acrylate
Optical cover material	Acrylate
Fixation material	Stainless steel
Housing Color	Dark gray
Mounting device	Post-top for diameter 60 mm
Optical cover shape	Flat
Optical cover finish	Frosted
Overall height	265 mm
Overall diameter	578 mm
Ingress protection code	IP65 [Dust penetration-protected, jet-proof]
Mech. impact protection code	IK07 [2 J reinforced]
Standard tilt angle posttop	-
Standard tilt angle side entry	-
Optical cover type	Acrylate cover and semi-matt high-reflective optic

Net Weight (Piece)	4.499 kg
---------------------------	----------

Approval and Application

Flammability mark	-
CE mark	No
ENEC mark	-
EU RoHS compliant	Yes
Ambient temperature range	-40 to +50 °C

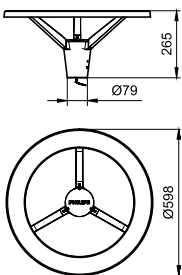
Initial Performance (IEC Compliant)

Luminous flux tolerance	+/-10%
Initial chromaticity	SDCM>5
Power consumption tolerance	+/-10%

Product Data

Order product name	BGP161 LED2500/NW PSU 220-240V 7043 IN
Full product name	BGP161 LED2500/NW PSU 220-240V 7043 IN
Full product code	911401633703
Order code	911401633703
Material Nr. (12NC)	911401633703
Numerator - Quantity Per Pack	1
Numerator - Packs per outer box	2

Dimensional drawing



Smart Post-top G3

