



Aura

RC430V LED51/9TW W60L120 PSD OC CAU

Aura, 120 lm/W, Tunable white, DALI

As an innovative troffer, CoreView Pro RC430V uses indirect and direct light output to reach UGR19 without using heavy and big glare control plates. The central module can be easily replaceable for future maintenance. The light from the central light module can be controlled separately to fit multiple applications. BioUp technology provides better well being for the people in indoor environment.

Product data

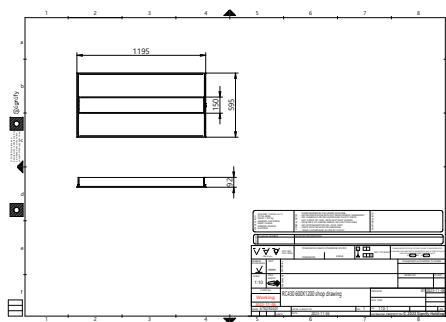
General Information		Operating and Electrical	
Number of gear units	1 unit	Input Voltage	220-240 V
Gear	-	Line Frequency	50 or 60 Hz
Driver included	Yes	Inrush current	6.26 A
Light source engine type	LED	Inrush time	0.035 ms
Value ladder	Specification	Power Consumption	43 W
Warranty period	3 years	Power Factor (Fraction)	0.9
Light Technical		Connection	Plug-in connector 2-pole
Luminous Flux	5,100 lm	Cable	Cable 1.2 m with plug
Correlated Color Temperature (Nom)	Tunable white 2700-6500 K	Number of products on MCB of 16 A type B	53
Luminous Efficacy (rated) (Nom)	120 lm/W	Suitable for random switching	Yes
Color rendering index (CRI)	90	Protection class IEC	Safety class II
Number of light sources	1	Controls and Dimming	
Beam angle of light source	115 degree(s)	Dimmable	DALI
Light source color	Tunable white	Control interface	DALI
Optic type	Beam angle 90°	Maximum dim level	1%
Luminaire light beam spread	90°	Mechanical and Housing	
Unified glare rating CEN	19	Housing Material	Metal

Reflector material	Steel
Optic material	Polycarbonate
Optical cover material	Polystyrene
Housing Color	White RAL 9003
Mounting device	Recessed mounting box square
Optical cover finish	Diffused lens optic
Overall length	1,195 mm
Overall width	595 mm
Overall height	92 mm
Dimensions (Height x Width x Depth)	92 x 595 x 1195 mm
Ingress protection code	IP20 [Finger-protected]
Mech. impact protection code	IK03 [0.3 J]
Optical cover type	Prismatic bowl/cover linear horizontal
Net Weight (Piece)	3.440 kg

Approval and Application

Glow-wire test	Temperature 650 °C, duration 30 s
Flammability mark	For mounting on normally flammable surfaces
CE mark	Yes
ENEC mark	ENEC mark

Dimensional drawing



Photobiological risk	Photobiological risk group 0 @200mm to EN62778
EU RoHS compliant	Yes
Performance ambient temperature Tq	25 °C
Ambient temperature range	-20 to +40 °C

Initial Performance (IEC Compliant)

Luminous flux tolerance	-10% / +10%
Initial chromaticity	3
Power consumption tolerance	+/-10%

Product Data

Order product name	RC430V LED51/9TW W60L120 PSD OC CAU
Full product name	RC430V LED51/9TW W60L120 PSD OC CAU
Order code	911401582245
Material Nr. (12NC)	911401582245
Numerator - Quantity Per Pack	1
Numerator - Packs per outer box	2

