



# GreenPerform Waterproof G3

## WT198X LED20S/840 L1 S L600

GreenPerform Waterproof G3, 14.7 W, 2000 lm, 4000 K

GreenPerform Waterproof G3 is a superb choice for hard-working applications. Not only does it provide excellent optical performance, it also delivers substantial energy saving. And because it works seamlessly with IoT software like Interact, it also offers the option of customization, convenience, and data-driven insights.

### Warnings and Safety

- UV radiation will damage the material over time resulting in loss of waterproof sealing and IP65 rating.
- Do not install the luminaire in locations where it will be exposed to direct sunlight.

### Product data

| General Information                |                 | Operating and Electrical                 |                          |
|------------------------------------|-----------------|--|--------------------------|
| Number of gear units               | 1 unit          | Light source color                       | 840 neutral white        |
| Gear                               | EB [Electronic] | Optic type                               | -                        |
| Driver included                    | Yes             | Input Voltage                            | 220 to 240 V             |
| Light source engine type           | LED             | Line Frequency                           | 50 to 60 Hz              |
| Service tag                        | Yes             | Inrush current                           | 8 A                      |
| Value ladder                       | Performance     | Inrush time                              | 186 ms                   |
| Luminous Flux                      | 2,000 lm        | Power Consumption                        | 14.7 W                   |
| Correlated Color Temperature (Nom) | 4000 K          | Power Factor (Fraction)                  | 0.9                      |
| Luminous Efficacy (rated) (Nom)    | 136.1 lm/W      | Connection                               | Push-in connector 3-pole |
| Color rendering index (CRI)        | 80              | Cable                                    | -                        |
| Number of light sources            | 1               | Number of products on MCB of 16 A type B | 84                       |
|                                    |                 | Suitable for random switching            | Yes                      |

# GreenPerform Waterproof G3

|                                     |  |
|-------------------------------------|--|
| Protection class IEC                | Safety class I                               |
| <b>Controls and Dimming</b>         |  |
| Dimmable                            | Step Dim                                     |
| Control interface                   | -  |
| Maximum dim level                   | 20%  |
| <b>Mechanical and Housing</b>       |  |
| Housing Material                    | Plastic                                      |
| Reflector material                  | Steel  |
| Optic material                      | Polycarbonate                                |
| Optical cover material              | Polycarbonate                                |
| Housing Color                       | Gray   |
| Mounting device                     | Mounting bracket                             |
| Optical cover finish                | Clear  |
| Overall length                      | 665 mm                                       |
| Overall width                       | 80 mm  |
| Overall height                      | 76 mm  |
| Dimensions (Height x Width x Depth) | 76 x 80 x 665 mm                             |
| Ingress protection code             | IP65 [Dust penetration-protected, jet-proof] |
| Mech. impact protection code        | IK08 [5 J vandal-protected]                  |
| Optical cover type                  | Polycarbonate bowl/cover                     |
| Net Weight (Piece)                  | 0.800 kg                                     |
| <b>Approval and Application</b>     |  |
| Glow-wire test                      | Temperature 650 °C, duration 30 s            |

|                                    |  |
|------------------------------------|--|
| Flammability mark                  | -  |
| CE mark                            | Yes  |
| ENEC mark                          | -  |
| Photobiological risk               | Photobiological risk group 1 @200mm to EN62778 |
| EU RoHS compliant                  | No   |
| Performance ambient temperature Tq | 35 °C  |
| Ambient temperature range          | -20 to +45 °C                                  |

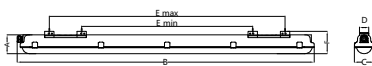
## Initial Performance (IEC Compliant)

|                             |                     |
|-----------------------------|---------------------|
| Luminous flux tolerance     | -10% / +10%         |
| Initial chromaticity        | (0.38, 0.38) SDCM≤3 |
| Power consumption tolerance | +/-10%              |

## Product Data

|                                 |                             |
|---------------------------------|-----------------------------|
| Order product name              | WT198X LED20S/840 L1 S L600 |
| Full product name               | WT198X LED20S/840 L1 S L600 |
| Full product code               | 872016953238099             |
| Order code                      | 911401571091                |
| Material Nr. (12NC)             | 911401571091                |
| Numerator - Quantity Per Pack   | 1                           |
| EAN/UPC - Product/Case          | 8720169532380               |
| Numerator - Packs per outer box | 9                           |
| EAN/UPC - Case                  | 8720169543874               |

## Dimensional drawing



| Type  | Dimension (mm) |      |    |    |       |       | Nr. Of Clips |
|-------|----------------|------|----|----|-------|-------|--------------|
|       | A              | B    | C  | D  | E min | E max |              |
| L600  | 76             | 665  | 80 | 38 | 388   | 512   | 6            |
| L1200 | 76             | 1315 | 80 | 38 | 538   | 1062  | 10           |
| L1500 | 76             | 1515 | 80 | 38 | 538   | 1362  | 12           |

## GreenPerform Waterproof G3

