



SlimBalance Symphony

SP570P LED123/840 D150W6 270 SD CRV PSU

SlimBalance Symphony, Mounting bracket, 144.21052631578948 lm/W, 840 neutral white, Fixed Output

SlimBalance Symphony SP570P Curve is a flexible curve offer which fits a variety of spaces like office, meeting room, gym and education. It offers ¼ circle, ½ circle, ¾ circle and full circle as standard offers. In addition to these standard offers, SlimBalance Symphony SP570P Curve provides flexible angle from 22.5 degree to 360 degree. By means of its special designed structure, it offers quick and easy installation and maintenance too.

Product data

General Information		Light source color	
Number of gear units	1 unit	Light source color	840 neutral white
Gear	-	Optic type	Opal
Driver included	Yes	Luminaire light beam spread	100°
Light source engine type	LED	Unified glare rating CEN	27
Value ladder	Performance	Operating and Electrical	
Warranty period	3 years	Input Voltage	220-240 V
Light Technical		Line Frequency	50 or 60 Hz
Luminous Flux	12,330 lm	Inrush current	43 A
Correlated Color Temperature (Nom)	4000 K	Inrush time	0.169 ms
Luminous Efficacy (rated) (Nom)	144.21052631578948 lm/W	Power Consumption	85.5 W
Color rendering index (CRI)	≥80	Power Factor (Fraction)	0.95
Number of light sources	12	Connection	Wire to wire
Beam angle of light source	120 degree(s)	Cable	Cable 0.3 m without plug
		Number of products on MCB of 16 A type B	15

SlimBalance Symphony

Suitable for random switching	No
Protection class IEC	Safety class I

Controls and Dimming

Dimmable	Fixed
Control interface	Fixed Output
Maximum dim level	Not applicable

Mechanical and Housing

Housing Material	Aluminium
Reflector material	Polycarbonate
Optic material	Polycarbonate
Optical cover material	Polycarbonate
Housing Color	White RAL 9006
Mounting device	Mounting bracket
Optical cover finish	Opal
Overall length	1,509 mm
Overall width	1,285 mm
Overall height	75 mm
Dimensions (Height x Width x Depth)	75 x 1285 x 1509 mm
Ingress protection code	IP20 [Finger-protected]
Mech. impact protection code	IK03 [0.3 J]
Optical cover type	Polycarbonate bowl/cover
Net Weight (Piece)	5.620 kg

Approval and Application

Glow-wire test	Temperature 650 °C, duration 30 s
----------------	-----------------------------------

Flammability mark	-
CE mark	Yes
ENEC mark	-
Photobiological risk	Photobiological risk group 0 @200mm to EN62778
Photobiological risk specification	0.2 m
EU RoHS compliant	Yes
Performance ambient temperature Tq	25 °C
Ambient temperature range	-20 to +40 °C

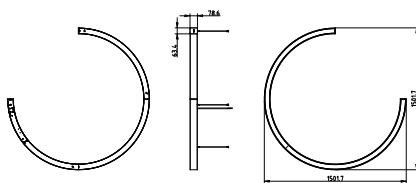
Initial Performance (IEC Compliant)

Luminous flux tolerance	+/-10%
Initial chromaticity	SDCM < 4
Power consumption tolerance	+/-10%

Product Data

Order product name	SP570P LED123/840 D150W6 270 SD CRV PSU
Full product name	SP570P LED123/840 D150W6 270 SD CRV PSU
Order code	911401558046
Material Nr. (12NC)	911401558046
Numerator - Quantity Per Pack	1
Numerator - Packs per outer box	1

Dimensional drawing



SlimBalance Symphony

