



# GreenPerform Waterproof G3

## WT198X LED38S/840 L1 W PCO L1200

GreenPerform Waterproof G3, 28.9 W, 3800 lm, 4000 K,  
Wireless

GreenPerform Waterproof G3 is a superb choice for hard-working applications. Not only does it provide excellent optical performance, it also delivers substantial energy saving. And because it works seamlessly with IoT software like Interact, it also offers the option of customization, convenience, and data-driven insights.

### Warnings and Safety

- UV radiation will damage the material over time resulting in loss of waterproof sealing and IP65 rating.
- Do not install the luminaire in locations where it will be exposed to direct sunlight.

### Product data

General Information		Number of light sources	
Number of gear units	1 unit		1
Gear	EB [Electronic]	Light source color	840 neutral white
Driver included	Yes	Optic type	-
Light source engine type	LED	Operating and Electrical	
Service tag	Yes	Input Voltage	220 to 240 V
Value ladder	Performance	Line Frequency	50 to 60 Hz
Light Technical		Inrush current	8 A
Luminous Flux	3.800 lm	Inrush time	186 ms
Correlated Color Temperature (Nom)	4000 K	Power Consumption	28.9 W
Luminous Efficacy (rated) (Nom)	131.5 lm/W	Power Factor (Fraction)	0.9
Color rendering index (CRI)	80	Connection	Push-in connector 3-pole
		Cable	-

# GreenPerform Waterproof G3

Number of products on MCB of 16 A type B	84
Suitable for random switching	Yes
Protection class IEC	Safety class I

## Controls and Dimming

Dimmable	Step Dim
Control interface	Wireless
Maximum dim level	20%

## Mechanical and Housing

Housing Material	Plastic
Reflector material	Steel
Optic material	Polycarbonate
Optical cover material	Polycarbonate
Housing Color	Gray
Mounting device	Mounting bracket
Optical cover finish	Opal
Overall length	1,215 mm
Overall width	80 mm
Overall height	76 mm
Dimensions (Height x Width x Depth)	76 x 80 x 1215 mm
Ingress protection code	IP65 [Dust penetration-protected, jet-proof]
Mech. impact protection code	IK08 [5 J vandal-protected]
Optical cover type	Polycarbonate bowl/cover
Net Weight (Piece)	1.390 kg

## Approval and Application

Glow-wire test	Temperature 650 °C, duration 30 s
----------------	-----------------------------------

Flammability mark	-
CE mark	Yes
ENEC mark	-
Photobiological risk	Photobiological risk group 1 @200mm to EN62778
EU RoHS compliant	No
Performance ambient temperature Tq	35 °C
Ambient temperature range	-20 to +45 °C

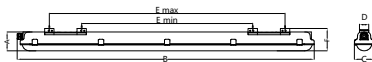
## Initial Performance (IEC Compliant)

Luminous flux tolerance	-10% / +10%
Initial chromaticity	(0.38, 0.38) SDCM≤3
Power consumption tolerance	+/-10%

## Product Data

Order product name	WT198X LED38S/840 L1 W PCO L1200
Full product name	WT198X LED38S/840 L1 W PCO L1200
Full product code	872016953268799
Order code	53268799
Material Nr. (12NC)	911401552702
Numerator - Quantity Per Pack	1
EAN/UPC - Product/Case	8720169532687
Numerator - Packs per outer box	9
EAN/UPC - Case	8720169544178

## Dimensional drawing



Type	Dimension (mm)							Nr. Of Clips
	A	B	C	D	E min	E max	F	
L600		665		38	308	512		6
L1200	76	1215	80	38	538	1062	85	10
L1500		1515		38	838	1362		12

## GreenPerform Waterproof G3

