



GreenPerform Waterproof G3

WT198X LED20S/865 L1 W L600

GreenPerform Waterproof G3, 14.7 W, 2000 lm, 6500 K, Wireless

GreenPerform Waterproof G3 is a superb choice for hard-working applications. Not only does it provide excellent optical performance, it also delivers substantial energy saving. And because it works seamlessly with IoT software like Interact, it also offers the option of customization, convenience, and data-driven insights.

Warnings and Safety

- UV radiation will damage the material over time resulting in loss of waterproof sealing and IP65 rating.
- Do not install the luminaire in locations where it will be exposed to direct sunlight.

Product data

General Information		Light source color	
Number of gear units	1 unit	Light source color	865 cool daylight
Gear	EB [Electronic]	Optic type	-
Driver included	Yes	Operating and Electrical	
Light source engine type	LED	Input Voltage	220 to 240 V
Service tag	Yes	Line Frequency	50 to 60 Hz
Value ladder	Performance	Inrush current	8 A
Light Technical		Inrush time	186 ms
Luminous Flux	2,000 lm	Power Consumption	14.7 W
Correlated Color Temperature (Nom)	6500 K	Power Factor (Fraction)	0.9
Luminous Efficacy (rated) (Nom)	136.1 lm/W	Connection	Push-in connector 3-pole
Color rendering index (CRI)	80	Cable	-
Number of light sources	1	Number of products on MCB of 16 A type B	84
		Suitable for random switching	Yes

GreenPerform Waterproof G3

Protection class IEC	Safety class I
----------------------	----------------

Controls and Dimming

Dimmable	Wireless Dim
Control interface	Wireless
Maximum dim level	20%

Mechanical and Housing

Housing Material	Plastic
Reflector material	Steel
Optic material	Polycarbonate
Optical cover material	Polycarbonate
Housing Color	Gray
Mounting device	Mounting bracket
Optical cover finish	Clear
Overall length	665 mm
Overall width	80 mm
Overall height	76 mm
Dimensions (Height x Width x Depth)	76 x 80 x 665 mm
Ingress protection code	IP65 [Dust penetration-protected, jet-proof]
Mech. impact protection code	IK08 [5 J vandal-protected]
Optical cover type	Polycarbonate bowl/cover
Net Weight (Piece)	0.800 kg

Approval and Application

Glow-wire test	Temperature 650 °C, duration 30 s
----------------	-----------------------------------

Flammability mark	-
CE mark	Yes
ENEC mark	-
Photobiological risk	Photobiological risk group 1 @200mm to EN62778
EU RoHS compliant	No
Performance ambient temperature Tq	35 °C
Ambient temperature range	-20 to +45 °C

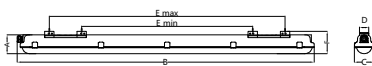
Initial Performance (IEC Compliant)

Luminous flux tolerance	-10% / +10%
Initial chromaticity	(0.32, 0.33) SDCM≤3
Power consumption tolerance	+/-10%

Product Data

Order product name	WT198X LED20S/865 L1 W L600
Full product name	WT198X LED20S/865 L1 W L600
Full product code	872016953261899
Order code	911401552002
Material Nr. (12NC)	911401552002
Numerator - Quantity Per Pack	1
EAN/UPC - Product/Case	8720169532618
Numerator - Packs per outer box	9
EAN/UPC - Case	8720169544109

Dimensional drawing



Type	Dimension (mm)						Nr. Of Clips
	A	B	C	D	E min	E max	
L600	76	665	80	38	388	512	6
L1200	76	1315	80	38	538	1062	10
L1500	76	1515	80	38	538	1362	12

GreenPerform Waterproof G3

