



GreenPerform Teardrop G3

CR388C G3 LED17/Amber L120

GreenPerform Teardrop G3, 19 W, 1750 lm, Wide beam, IP40 | Wire-protected

Greenperform Teardrop CR388C G3 is an affordable but with high system efficacy cleanroom batten. By means of its slim and streamlined design, it perfectly reduces the dust collection on the housing. Thanks to its max 150lm/w system efficacy, it delivers higher energy saving for the customer. In addition, CR388C G3 provides easy connection for continuous installation. Dali interface and CRI90 are provided by this family to further extend the availability for control interface and visual comfort. CR388C G3 is a decent product for newly installed cleanroom and retrofit cleanroom projects as well.

Product data

| General Information | | Number of light sources | |
|------------------------------------|-----------------|-----------------------------|----------------------|
| Number of gear units | 1 unit | | 98 |
| Gear | EB [Electronic] | Beam angle of light source | 120 degree(s) |
| Driver included | Yes | Light source color | - |
| Light source engine type | LED | Optic type | Wide beam |
| Value ladder | Performance | Luminaire light beam spread | - |
| Warranty period | 5 years | Unified glare rating CEN | Not applicable |
| | | Effective projected area | 0.048 m ² |
| Light Technical | | Operating and Electrical | |
| Luminous Flux | 1,750 lm | Input Voltage | 220 to 240 V |
| Correlated Color Temperature (Nom) | - | Line Frequency | 50 or 60 Hz |
| Luminous Efficacy (rated) (Nom) | 92 lm/W | Inrush current | 9.3 A |
| Color rendering index (CRI) | >80 | Inrush time | 0.18 ms |

GreenPerform Teardrop G3

| | |
|--|----------------------------|
| Power Consumption | 19 W |
| Power Factor (Fraction) | 0.9 |
| Connection | Push-in connector 3-pole |
| Cable | - Cable 0.3 m without plug |
| Number of products on MCB of 16 A type B | 44 |
| Suitable for random switching | Yes |
| Protection class IEC | Safety class I |

Controls and Dimming

| | |
|-------------------|----------------|
| Dimmable | - |
| Control interface | - |
| Maximum dim level | Not applicable |

Mechanical and Housing

| | |
|-------------------------------------|-----------------------|
| Housing Material | Plastic |
| Reflector material | - |
| Optic material | Polycarbonate |
| Optical cover material | Polycarbonate |
| Housing Color | White RAL 9003 |
| Mounting device | Wall-mounting bracket |
| Optical cover finish | Frosted |
| Overall length | 1,094.5 mm |
| Overall width | 44.5 mm |
| Overall height | 62.5 mm |
| Dimensions (Height x Width x Depth) | 63 x 45 x 1095 mm |
| Ingress protection code | IP40 [Wire-protected] |
| Mech. impact protection code | IK03 [0.3 J] |
| Optical cover type | Polycarbonate |

| | |
|--------------------|----------|
| Net Weight (Piece) | 0.670 kg |
|--------------------|----------|

Approval and Application

| | |
|------------------------------------|--|
| Glow-wire test | - |
| Flammability mark | - |
| CE mark | Yes |
| ENEC mark | - |
| Photobiological risk | Photobiological risk group 1 @200mm to EN62778 |
| Photobiological risk specification | 0 m |
| EU RoHS compliant | Yes |
| Performance ambient temperature Tq | 25 °C |
| Ambient temperature range | 0 to +35 °C |

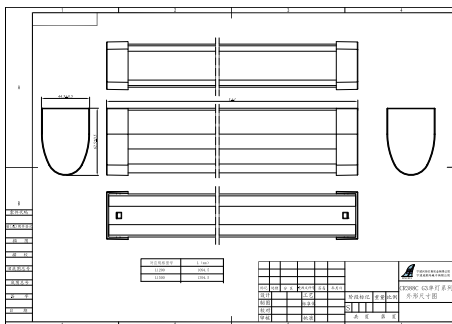
Initial Performance (IEC Compliant)

| | |
|-----------------------------|--------|
| Luminous flux tolerance | +/-10% |
| Initial chromaticity | 1750 |
| Power consumption tolerance | +/-10% |

Product Data

| | |
|---------------------------------|----------------------------|
| Order product name | CR388C G3 LED17/Amber L120 |
| Full product name | CR388C G3 LED17/Amber L120 |
| Order code | 911401511344 |
| Material Nr. (12NC) | 911401511344 |
| Numerator - Quantity Per Pack | 1 |
| Numerator - Packs per outer box | 16 |

Dimensional drawing



GreenPerform Teardrop G3

