



# GreenPerform Teardrop G3

## CR388C G3 LED22/850 L120

GreenPerform Teardrop G3, 15 W, 850 neutral white, 2250 lm, Wide beam, IP40 | Wire-protected

Greenperform Teardrop CR388C G3 is an affordable but with high system efficacy cleanroom batten. By means of its slim and streamlined design, it perfectly reduces the dust collection on the housing. Thanks to its max 150lm/w system efficacy, it delivers higher energy saving for the customer. In addition, CR388C G3 provides easy connection for continuous installation. Dali interface and CRI90 are provided by this family to further extend the availability for control interface and visual comfort. CR388C G3 is a decent product for newly installed cleanroom and retrofit cleanroom projects as well.

### Product data

General Information		Operating and Electrical	
Number of gear units	1 unit	Number of light sources	80
Gear	EB [Electronic]	Beam angle of light source	120 degree(s)
Driver included	Yes	Light source color	850 neutral white
Light source engine type	LED	Optic type	Wide beam
Value ladder	Performance	Luminaire light beam spread	-
Warranty period	5 years	Unified glare rating CEN	Not applicable
		Effective projected area	0.048 m <sup>2</sup>
Light Technical			
Luminous Flux	2,250 lm	Input Voltage	220 to 240 V
Correlated Color Temperature (Nom)	5000 K	Line Frequency	50 or 60 Hz
Luminous Efficacy (rated) (Nom)	150 lm/W	Inrush current	7.8 A
Color rendering index (CRI)	>80	Inrush time	0.13 ms

# GreenPerform Teardrop G3

Power Consumption	15 W
Power Factor (Fraction)	0.9
Connection	Push-in connector 3-pole
Cable	- Cable 0.3 m without plug
Number of products on MCB of 16 A type B 77	
Suitable for random switching	Yes
Protection class IEC	Safety class I

## Controls and Dimming

Dimmable	-
Control interface	-
Maximum dim level	Not applicable

## Mechanical and Housing

Housing Material	Plastic
Reflector material	-
Optic material	Polycarbonate
Optical cover material	Polycarbonate
Housing Color	White RAL 9003
Mounting device	Wall-mounting bracket
Optical cover finish	Frosted
Overall length	1,094.5 mm
Overall width	44.5 mm
Overall height	62.5 mm
Dimensions (Height x Width x Depth)	63 x 45 x 1095 mm
Ingress protection code	IP40 [Wire-protected]
Mech. impact protection code	IK03 [0.3 J]
Optical cover type	Polycarbonate

Net Weight (Piece)	0.670 kg
--------------------	----------

## Approval and Application

Glow-wire test	-
Flammability mark	-
CE mark	Yes
ENEC mark	-
Photobiological risk	Photobiological risk group 1 @200mm to EN62778
Photobiological risk specification	0 m
EU RoHS compliant	Yes
Performance ambient temperature Tq	25 °C
Ambient temperature range	0 to +35 °C

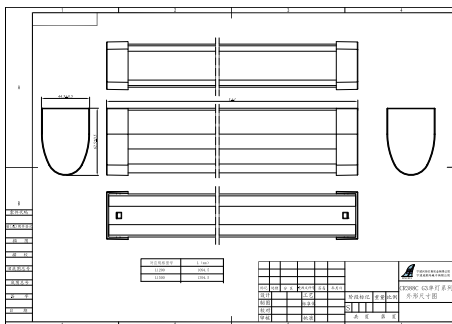
## Initial Performance (IEC Compliant)

Luminous flux tolerance	+/-10%
Initial chromaticity	2250
Power consumption tolerance	+/-10%

## Product Data

Order product name	CR388C G3 LED22/850 L120
Full product name	CR388C G3 LED22/850 L120
Order code	911401510444
Material Nr. (12NC)	911401510444
Numerator - Quantity Per Pack	1
Numerator - Packs per outer box	16

## Dimensional drawing



## GreenPerform Teardrop G3

