



KeyLine, Surface & Suspended

SM350C 34S/840 PSD PCS L1500 ALU

KeyLine, Surface & Suspended, 26 W, L1500 mm; H70 mm, 3400 lm, 4000 K, DALI, UGR19

L1500 mm; H70 mm, Aluminum, Aluminum, Power supply unit with DALI interface, 3400 lm, 26 W, 136 lm/W, 4000 K, (0.39, 0.38) SDCM <3, UGR19, Medium beam, Textured, Polycarbonate, IP20 | Finger-protected, IK06 | 1 J, Safety class I, Push-in connector 5-pole

Warnings and Safety

- KeyLine luminaires have an IP20 classification and are not protected against water ingress. We strongly recommend that the installation environment is checked for suitability.
- If – despite the IPX0 classification warning – luminaires are subject to water ingress, Philips and Signify cannot guarantee safety or prevent failure. In this case the product warranty does not apply and becomes void.

Product data

General Information		Saturated Red (R9)	
Light source replaceable	No		<50
Number of gear units	1 unit	Correlated Color Temperature (Nom)	4000 K
Driver included	Yes	Luminous Efficacy (rated) (Nom)	136 lm/W
Service tag	Yes	Color rendering index (CRI)	>80
Lighting Technology	LED	Beam angle of light source	120 degree(s)
Value ladder	Performance	Light source color	840 neutral white
Warranty period	5 years	Optic type	Medium beam
		Luminaire light beam spread	74° x 74°
		Unified glare rating CEN	19
Light Technical			
Luminous Flux	3,400 lm		

KeyLine, Surface & Suspended

Operating and Electrical	
Input Voltage	220 to 240 V
Line Frequency	50 to 60 Hz
Inrush current	23.1 A
Inrush time	221 ms
Power Consumption	26 W
Power Factor (Fraction)	0.9
Connection	Push-in connector 5-pole
Cable	-
Number of products on MCB of 16 A type B	22
Suitable for random switching	No
Protection class IEC	Safety class I

Controls and Dimming	
Dimmable	Yes
Driver/power unit/transformer	Power supply unit with DALI interface
Control interface	DALI
Constant light output	No
DALI Standard	DALI-2™
Maximum dim level	1%

Mechanical and Housing	
Housing Material	Aluminum
Reflector material	Steel
Optic material	Polycarbonate
Optical cover material	Polycarbonate
Fixation material	Stainless steel
Housing Color	Aluminum
Optical cover finish	Textured
Overall length	1,407 mm
Overall width	70 mm
Overall height	70 mm
Dimensions (Height x Width x Depth)	70 x 70 x 1407 mm
Ingress protection code	IP20 [Finger-protected]
Mech. impact protection code	IK06 [1 J]
Net Weight (Piece)	3.360 kg

Approval and Application	
Glow-wire test	Temperature 650 °C, duration 30 s
Flammability mark	For mounting on normally flammable surfaces
CE mark	Yes
ENEC mark	ENEC mark
Photobiological risk	Photobiological risk group 0 @200mm to EN62778
EU RoHS compliant	Yes
Performance ambient temperature Tq	25 °C
Flickering value (PstLM) - Flickering value as per EN 61000-3-3	1
Stroboscopic effect visibility measure (SVM)	0.4
Ambient temperature range	+10 to +35 °C

Initial Performance (IEC Compliant)	
Luminous flux tolerance	+/-10%
Initial chromaticity	(0.39, 0.38) SDCM <3
Power consumption tolerance	+/-10%
Standard Deviation of Colour Matching (McAdam ellipse)	SDCM≤3

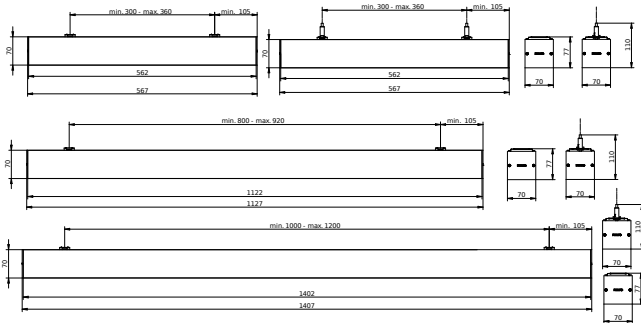
Over Time Performance (IEC Compliant)	
Control gear failure rate at median useful life 50000 h	5 %
Lumen maintenance (EN-IEC 62722-2-1) at median useful life* 50000 h	L90
Lumen maintenance (EN-IEC 62722-2-1) at median useful life* 100000 h	L80

Sustainability Data	
Sustainability rating	Unclassified
Repair class	Repair Class D, this product is not designed to be repaired.
Embedded carbon (A1-A3)	75.4 kg CO _{2e}
Product non-virgin material ratio	4.12 %
Recyclable content ratio of the finished product	59.8 %
GWP total B6 (kg CO _{2eq}) Declared Unit	Please calculate using your local energy mix value: Power Declared Unit (kW) * Service life (hrs) Declared Unit * Energy mix (kg CO _{2eq} / kWh)
GWP total B6 (kg CO _{2eq}) Functional Unit	Please calculate using your local energy mix value: Power Declared Unit (kW) * 1000 (lm) /lumen output (lm) Declared Unit * 35000 (hrs) * Energy mix (kg CO ₂ eq / kWh)
Non-virgin material ratio of the packaging	Cardboard > 80% recycled
Packaging Recyclable content ratio	Cardboard recycling rate > 80%
Packaging Material	Cardboard

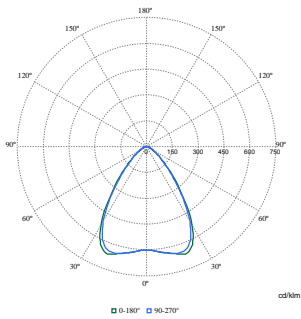
Product Data	
Order product name	SM350C 34S/840 PSD PCS L1500 ALU
Full product name	SM350C 34S/840 PSD PCS L1500 ALU
Full product code	871951462446700
Order code	910925868382
Material Nr. (12NC)	910925868382
Numerator - Quantity Per Pack	1
EAN/UPC - Product/Case	8719514624467
Numerator - Packs per outer box	1
EAN/UPC - Case	8719514624467
Product family code	SM350C [KeyLine]

KeyLine, Surface & Suspended

Dimensional drawing



Photometric data



Polar Normal (separate) - SM350CI - 910925868382

