



# KeyLine, Surface & Suspended

## SM350C 27S/830 PSD PCS L1200 ALU

KeyLine, Surface & Suspended, 21 W, L1200 mm; H70 mm, 2700 lm, 3000 K, DALI, UGR19

These days, many office owners and office lighting designers prefer lines of light. The reason is simple. Not only do light lines come in a minimalistic design; they also offer far more choice and flexibility. Short or long lines and luminaires, standalone luminaires, different optics including asymmetric, different shapes and even a variety of colors; anything is possible. And with KeyLine, all these benefits come at a competitive price while still complying with office lighting norms. KeyLine is a superb light line range with a slim, minimalistic design and a high lumen output to illuminate the brightest office spaces. But with comfortable, low levels of glare it's also easy on the eye and complies with UGR19. That makes KeyLine ideal for linear applications, as well as standalone suspended or surface-mounted luminaires (Accessories to be ordered separately). A range that offers the ultimate flexibility and unlimited possibilities. KeyLine design flexibility comes in the form of different lengths, colors and light outputs - including L-shapes, as well as straight lines. All with high efficiency up to 142 lm/W, and the option to upgrade with wireless connectivity and control. Add to that attractive pricing, and with KeyLine you can also enjoy excellent value that ensures a superb total cost of ownership.

### Warnings and Safety

- KeyLine luminaires have an IP20 classification and are not protected against water ingress. We strongly recommend that the installation environment is checked for suitability.
- If – despite the IPX0 classification warning – luminaires are subject to water ingress, Philips and Signify cannot guarantee safety or prevent failure. In this case the product warranty does not apply and becomes void.

### Product data

## KeyLine, Surface & Suspended

General Information	
Light source replaceable	No
Number of gear units	1 unit
Driver included	Yes
Service tag	Yes
Lighting Technology	LED
Value ladder	Performance
Warranty period	5 years

Light Technical	
Luminous Flux	2,700 lm
Saturated Red (R9)	<50
Correlated Color Temperature (Nom)	3000 K
Luminous Efficacy (rated) (Nom)	135 lm/W
Color rendering index (CRI)	>80
Beam angle of light source	120 degree(s)
Light source color	830 warm white
Optic type	Medium beam
Luminaire light beam spread	74° x 74°
Unified glare rating CEN	19

Operating and Electrical	
Input Voltage	220 to 240 V
Line Frequency	50 to 60 Hz
Inrush current	23.1 A
Inrush time	221 ms
Power Consumption	21 W
Power Factor (Fraction)	0.9
Connection	Push-in connector 5-pole
Cable	-
Number of products on MCB of 16 A type B	22
Suitable for random switching	No
Protection class IEC	Safety class I

Controls and Dimming	
Dimmable	Yes
Driver/power unit/transformer	Power supply unit with DALI interface
Control interface	DALI
Constant light output	No
DALI Standard	DALI-2™
Maximum dim level	1%

Mechanical and Housing	
Housing Material	Aluminum
Reflector material	Steel
Optic material	Polycarbonate
Optical cover material	Polycarbonate
Fixation material	Stainless steel
Housing Color	Aluminum
Optical cover finish	Textured
Overall length	1,127 mm

Overall width	70 mm
Overall height	70 mm
Dimensions (Height x Width x Depth)	70 x 70 x 1127 mm
Ingress protection code	IP20 [Finger-protected]
Mech. impact protection code	IK06 [1 J]
Net Weight (Piece)	2.580 kg

Approval and Application	
Glow-wire test	Temperature 650 °C, duration 30 s
Flammability mark	For mounting on normally flammable surfaces
CE mark	Yes
ENEC mark	ENEC mark
Photobiological risk	Photobiological risk group 0 @200mm to EN62778
EU RoHS compliant	Yes
Performance ambient temperature Tq	25 °C
Flickering value (PstLM) - Flickering value as per EN 61000-3-3	1
Stroboscopic effect visibility measure (SVM)	0.4
Ambient temperature range	+10 to +35 °C

Initial Performance (IEC Compliant)	
Luminous flux tolerance	+/-10%
Initial chromaticity	(0.43, 0.40) SDCM <3
Power consumption tolerance	+/-10%
Standard Deviation of Colour Matching (McAdam ellipse)	SDCM≤3

Over Time Performance (IEC Compliant)	
Control gear failure rate at median useful life 50000 h	5 %
Lumen maintenance (EN-IEC 62722-2-1) at median useful life* 50000 h	L90
Lumen maintenance (EN-IEC 62722-2-1) at median useful life* 100000 h	L80

Sustainability Data	
Sustainability rating	Unclassified
Repair class	Repair Class D, this product is not designed to be repaired.

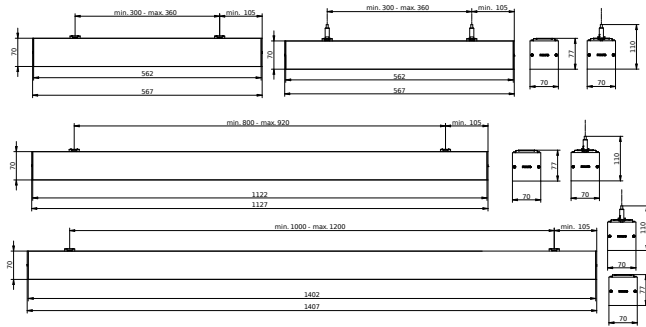
Product Data	
Order product name	SM350C 27S/830 PSD PCS L1200 ALU
Full product name	SM350C 27S/830 PSD PCS L1200 ALU
Full product code	871951462436800
Order code	910925868372
Material Nr. (12NC)	910925868372
Numerator - Quantity Per Pack	1
EAN/UPC - Product/Case	8719514624368
Numerator - Packs per outer box	1
EAN/UPC - Case	8719514624368

# KeyLine, Surface & Suspended

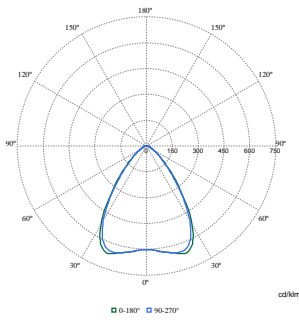
Product family code

SM350C [KeyLine]

## Dimensional drawing



## Photometric data



Polar Normal (separate) - SM350CI - 910925868372

