



GreenSpace Evo Projector

ST333X2 27S/830 PSU WB WH481

GreenSpace Evo Projector, 39.5 W, 5400 lm, 3000 K, Wide beam, White

GreenSpace Evo Projector is a powerful and flexible projector for retail with a subtle and neutral design. The 3D printed housing is crafted from at least 65% recycled or bio-circular materials, while the heatsink is made from 85% recycled aluminium. Because of its circular design, the luminaire is upgradable, reusable, fully serviceable and recyclable. Combined with the high energy efficiency, this makes the GreenSpace Evo a sustainable projector choice. The PerfectAccent reflectors ensure a light effect with increased sparkle and improved shopper eye comfort. The OptiAccent (FPO) Lens technology for maximizing central light intensity. GreenSpace Evo also comes in state-of-the-art ultra-efficient variants and integrates seamlessly onto 3C- and DALI-tracks, CoreLine Trunking and Maxos fusion. Further customization of colors and textures is possible via Philips MyCreation

Warnings and Safety

- Cleaning of the optic should only be done with pressurized air. Touching the LED or reflector is forbidden. For food preparation areas and areas with high levels of dust, the use of the optional front glass is strongly advised, as it can be cleaned with a (dry) microfiber cloth
- During maintenance, the product must be switched off and cooled down
- The product must be installed out of arm's reach. Manipulating the product when hot is only possible with an insulated glove

Product data

General Information		Value ladder	Performance
Number of gear units	2 units	Serviceability class	Class A, luminaire is equipped with serviceable parts (when applicable): LED
Driver included	Yes		

GreenSpace Evo Projector

	board, driver, control units, surge protection device, optics, front cover and mechanical parts
Warranty period	5 years
Sustainability rating	Signify Circle

Light Technical

Luminous Flux	5,400 lm
Correlated Color Temperature (Nom)	3000 K
Luminous Efficacy (rated) (Nom)	137 lm/W
Color rendering index (CRI)	80
Light source color	830 warm white
Optic type	Wide beam
Luminaire light beam spread	36°
Unified glare rating CEN	19

Operating and Electrical

Input Voltage	220 to 240 V
Line Frequency	50 to 60 Hz
Inrush current	4.4 A
Inrush time	66 ms
Power Consumption	39.5 W
Power Factor (Fraction)	0.9
Connection	Track
Cable	-
Number of products on MCB of 16 A type B	34
Suitable for random switching	Not applicable
Protection class IEC	Safety class II

Controls and Dimming

Dimmable	No
Driver/power unit/transformer	Power supply unit (On/Off)
Constant light output	No

Mechanical and Housing

Housing Material	Polycarbonate
Reflector material	Polycarbonate aluminum coated
Optic material	Aluminum and polycarbonate
Optical cover material	-
Fixation material	-
Housing Color	White
Optical cover finish	-
Overall length	565 mm
Overall width	92 mm

Overall height	200 mm
Overall diameter	0 mm
Dimensions (Height x Width x Depth)	200 x 92 x 565 mm
Ingress protection code	IP20 [Finger-protected]
Mech. impact protection code	IK02 [0.2 J standard]
Net Weight (Piece)	2.300 kg

Emergency Operation

Central Emergency	No
-------------------	----

Approval and Application

Glow-wire test	Temperature 650 °C, duration 30 s
Flammability mark	-
CE mark	Yes
ENEC mark	ENEC mark
EU RoHS compliant	Yes
Performance ambient temperature Tq	25 °C
Ambient temperature range	+10 to +25 °C

Initial Performance (IEC Compliant)

Luminous flux tolerance	+/-10%
Initial chromaticity	(0.434, 0.403)
Power consumption tolerance	+/-10%

Over Time Performance (IEC Compliant)

Control gear failure rate at median useful life 50000 h	10 %
Lumen maintenance (EN-IEC 62722-2-1) at median useful life* 50000 h	L80

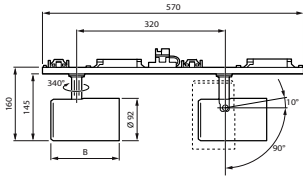
Product Data

Order product name	ST333X2 27S/830 PSU WB WH481
Full product name	ST333X2 27S/830 PSU WB WH481
Full product code	872016983505400
Order code	910505104618
Material Nr. (12NC)	910505104618
Numerator - Quantity Per Pack	1
EAN/UPC - Product/Case	8720169835054
Numerator - Packs per outer box	1
EAN/UPC - Case	8720169835054
Product family code	ST333X2 [GreenSpace Evo proj MF Double]

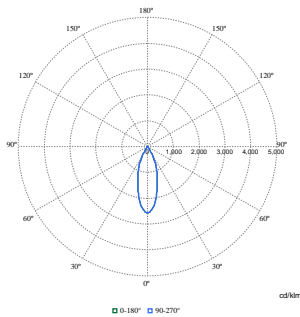
GreenSpace Evo Projector

Dimensional drawing

Flux	CCT	B (mm)
205	827/830/840/PW930/PW940/PC930	126
195	FMT/Rose	
275	827/CH/830/840/PW930/PW940/PC930	
395	827/CH/830/840/PW930/PW940	149
275	FMT/Rose/FR	
395	FR/PC930	
495	827/830/840/PW930/PW940	



Photometric data



Polar Normal (separate) - ST333TI - 910505104618

