



# TrueBlend Recessed

**RC453B 36S/940**  
**DLO9010U4ELW3L1200W300B30**

TrueBlend Recessed, 28.5 W, 1200X300 mm, B30, 3600 lm, 4000 K, CRI>90, Wireless, Interact Ready, UGR16, U4, TP(b), ELW3h/EL-DC

1200X300 mm, Steel, White, Pure white (RAL9010), Single layer powder coating, Mounting bracket - fixed height 30 mm - For C/U profiles, Sensor ready driver Interact System ready for central emergency lighting, Upgradable sensor slot with SC200 sensor, 3600 lm, 28.5 W, 126 lm/W, 4000 K, (0.38, 0.38) SDCM  $\leq$ 3.0, CRI>90, UGR16, Wide beam office compliant, White reflector, Diffused lens optic, Polymethyl methacrylate, IP20 | Finger-protected, IK03 | 0.3 J, Safety class I, Push-in connector 4-pole, TP(b) diffuser flammability class, DC operated central emergency lighting, Emergency lighting 3 hours duration with Wireless Interface

## Warnings and Safety

- The product is IP20 and, as such, is not protected against water ingress. Therefore, we strongly recommend that the environment in which the luminaire is to be installed is suitably checked.
- If the above advice is not taken and the luminaires are subject to water ingress, Philips / Signify cannot guarantee safe failure and the product warranty will become void.

## Product data

General Information		Warranty period	
Lamp family code	34S [LED module, system flux 3400 lm]	5 years	
Number of gear units	1 unit	Light Technical	
Driver included	Yes	Upward light output ratio	0
Light source engine type	LED	Luminous Flux	3,600 lm
Service tag	Yes	Correlated Color Temperature (Nom)	4000 K
Value ladder	Specification	Luminous Efficacy (rated) (Nom)	126 lm/W

# TrueBlend Recessed

Color rendering index (CRI)	>90
Light source color	940 neutral white
Optic type	Wide beam office compliant
Luminaire light beam spread	76° x 74°
Unified glare rating CEN	16

## Operating and Electrical

Input Voltage	220 to 240 V
Line Frequency	50 to 60 Hz
Inrush current	23 A
Inrush time	216 ms
Power Consumption	28.5 W
Power Factor (Fraction)	0.9
Connection	Push-in connector 4-pole
Cable	-
Number of products on MCB of 16 A type B	24
Suitable for random switching	Yes
Protection class IEC	Safety class I
Total harmonic distortion	20 %

## Controls and Dimming

Dimmable	Yes
Driver/power unit/transformer	Sensor ready driver Interact System ready for central emergency lighting
Control interface	Wireless
Constant light output	No
Maximum dim level	1%
Connectivity	Interact Ready
Embedded control	Upgradable sensor slot with SC200 sensor

## Mechanical and Housing

Housing Material	Steel
Reflector material	Steel
Optic material	Polymethyl methacrylate
Optical cover material	Polymethyl methacrylate
Fixation material	Steel
Housing Color	White
Mounting device	-
Optical cover shape	Flat
Optical cover finish	Diffused lens optic
Reflector Finish	White reflector
Overall length	1,200 mm
Overall width	300 mm
Overall height	75 mm
Dimensions (Height x Width x Depth)	75 x 300 x 1200 mm
Ingress protection code	IP20 [Finger-protected]
Mech. impact protection code	IK03 [0.3 J]
Mounting	Mounting bracket - fixed height 30 mm - For C/U profiles
Optical cover type	Acrylic bowl/cover frosted
Net Weight (Piece)	6.170 kg

## Emergency Operation

Emergency flux	520 lm
Power consumption during Central DC emergency mode	6 W
Rated duration of the emergency lighting (when fully charged)	3 hour(s)
Central Emergency	Yes
Emergency lighting	DC operated central emergency lighting Emergency lighting 3 hours duration with Wireless Interface
Emergency function testing method	Programmed automatic self testing via DALI or wireless lighting control system
Emergency lighting operation mode	Maintained

## Approval and Application

Glow-wire test	Temperature 850 °C, duration 30 s
Flammability mark	For mounting on normally flammable surfaces
CE mark	Yes
ENEC mark	ENEC mark
Photobiological risk	Photobiological risk group 1 @200mm to EN62778
EU RoHS compliant	Yes
Diffuser Flammability Class	TP(b) diffuser flammability class
Performance ambient temperature Tq	25 °C
Ambient temperature range	+10 to +35 °C

## Initial Performance (IEC Compliant)

Luminous flux tolerance	+/-10%
Initial chromaticity	(0.38, 0.38) SDCM ≤3.0
Power consumption tolerance	+/-10%
Init. Color Rendering Index Tolerance	+/-2

## Over Time Performance (IEC Compliant)

Control gear failure rate at median useful life 50000 h	2.5 %
Control gear failure rate at median useful life 100000 h	5 %
Lumen maintenance (EN-IEC 62722-2-1) at median useful life* 50000 h	L90
Lumen maintenance (EN-IEC 62722-2-1) at median useful life* 100000 h	L80

## Sustainability Data

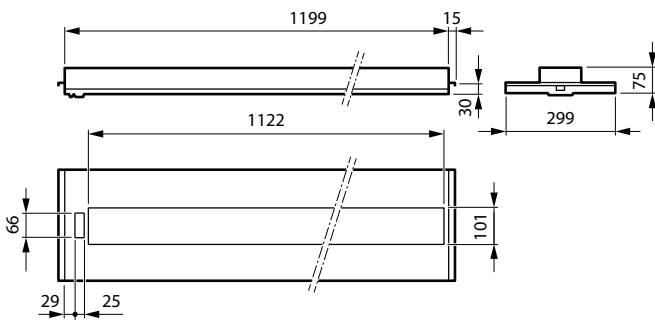
Sustainability rating	Unclassified
Repair class	Repair Class C, the driver of this luminaire can be replaced by a service technician. Special care is required during disassembly and reassembly, and specific tools may be required. Parts and documentation are available for a period of time.

# TrueBlend Recessed

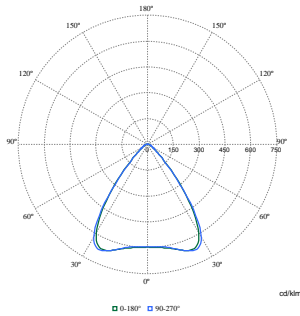
<b>Non-virgin material ratio of the packaging</b>	Cardboard > 80% recycled Plastic >35% recycled
<b>Packaging Recyclable content ratio</b>	Cardboard recycling rate > 80% Plastic recycling rate > 40%
<b>Packaging Material</b>	Cardboard Plastic
<b>Product Data</b>	
<b>Order product name</b>	RC453B 36S/940 DLO9010U4ELW3L1200W300B30
<b>Full product name</b>	RC453B 36S/940 DLO9010U4ELW3L1200W300B30

<b>Full product code</b>	872016962200500
<b>Order code</b>	910505103976
<b>Material Nr. (12NC)</b>	910505103976
<b>Numerator - Quantity Per Pack</b>	1
<b>EAN/UPC - Product/Case</b>	8720169622005
<b>Numerator - Packs per outer box</b>	1
<b>EAN/UPC - Case</b>	8720169622005
<b>Product family code</b>	RC455B [TrueBlend Recessed Bandrastrer]

## Dimensional drawing



## Photometric data



Polar Normal (separate) - RC450BI - 910505103976

## TrueBlend Recessed

