



TrueBlend Recessed

RC453B 36S/940 DLO U5 L1200 W300 B30

TrueBlend Recessed, 22.5 W, 1200x300 mm, B30, 3600 lm, 4000 K, CRI>90, Wireless, Interact Ready, UGR16, U5, TP(b), EL-DC

1200x300 mm, Steel, White, Signal white (RAL9003), Single layer powder coating, Mounting bracket - fixed height 30 mm - For C/U profiles, Sensor ready driver Interact System ready for central emergency lighting, Interact SC1500 Multi-sensor bundle, 3600 lm, 22.5 W, 160 lm/W, 4000 K, (0.38, 0.38) SDCM \leq 3.0, CRI>90, UGR16, Wide beam office compliant, White reflector, Diffused lens optic, Polymethyl methacrylate, IP20 | Finger-protected, IK03 | 0.3 J, Safety class I, Push-in connector 3-pole, TP(b) diffuser flammability class, DC operated central emergency lighting

Warnings and Safety

- The product is IP20 and, as such, is not protected against water ingress. Therefore, we strongly recommend that the environment in which the luminaire is to be installed is suitably checked.
- If the above advice is not taken and the luminaires are subject to water ingress, Philips / Signify cannot guarantee safe failure and the product warranty will become void.

Product data

| General Information | | Light Technical | |
|--------------------------|---------------------------------------|------------------------------------|----------------------------|
| Lamp family code | 34S [LED module, system flux 3400 lm] | Upward light output ratio | 0 |
| Number of gear units | 1 unit | Luminous Flux | 3,600 lm |
| Driver included | Yes | Correlated Color Temperature (Nom) | 4000 K |
| Light source engine type | LED | Luminous Efficacy (rated) (Nom) | 160 lm/W |
| Service tag | Yes | Color rendering index (CRI) | >90 |
| Value ladder | Specification | Light source color | 940 neutral white |
| Warranty period | 5 years | Optic type | Wide beam office compliant |
| | | Luminaire light beam spread | 76° x 74° |

TrueBlend Recessed

| | |
|--------------------------|----|
| Unified glare rating CEN | 16 |
|--------------------------|----|

Operating and Electrical

| | |
|--|--------------------------|
| Input Voltage | 220 to 240 V |
| Line Frequency | 50 to 60 Hz |
| Inrush current | 23 A |
| Inrush time | 216 ms |
| Power Consumption | 22.5 W |
| Power Factor (Fraction) | 0.9 |
| Connection | Push-in connector 3-pole |
| Cable | - |
| Number of products on MCB of 16 A type B | 24 |
| Suitable for random switching | Yes |
| Protection class IEC | Safety class I |
| Total harmonic distortion | 20 % |

Controls and Dimming

| | |
|-------------------------------|--|
| Dimmable | Yes |
| Driver/power unit/transformer | Sensor ready driver Interact System ready for central emergency lighting |
| Control interface | Wireless |
| Constant light output | No |
| Maximum dim level | 1% |
| Connectivity | Interact Ready |
| Embedded control | Interact SC1500 Multi-sensor bundle |

Mechanical and Housing

| | |
|-------------------------------------|--|
| Housing Material | Steel |
| Reflector material | Steel |
| Optic material | Polymethyl methacrylate |
| Optical cover material | Polymethyl methacrylate |
| Fixation material | Steel |
| Housing Color | White |
| Mounting device | - |
| Optical cover shape | Flat |
| Optical cover finish | Diffused lens optic |
| Reflector Finish | White reflector |
| Overall length | 1,200 mm |
| Overall width | 300 mm |
| Overall height | 75 mm |
| Dimensions (Height x Width x Depth) | 75 x 300 x 1200 mm |
| Ingress protection code | IP20 [Finger-protected] |
| Mech. impact protection code | IK03 [0.3 J] |
| Mounting | Mounting bracket - fixed height 30 mm - For C/U profiles |
| Optical cover type | Acrylic bowl/cover frosted |
| Net Weight (Piece) | 5.670 kg |

Emergency Operation

| | |
|--------------------|--|
| Central Emergency | Yes |
| Emergency lighting | DC operated central emergency lighting |

| | |
|-----------------------------------|------------|
| Emergency lighting operation mode | Maintained |
|-----------------------------------|------------|

Approval and Application

| | |
|------------------------------------|--|
| Glow-wire test | Temperature 850 °C, duration 30 s |
| Flammability mark | For mounting on normally flammable surfaces |
| CE mark | Yes |
| ENEC mark | ENEC mark |
| Photobiological risk | Photobiological risk group 1 @200mm to EN62778 |
| EU RoHS compliant | Yes |
| Diffuser Flammability Class | TP(b) diffuser flammability class |
| Performance ambient temperature Tq | 25 °C |
| Ambient temperature range | +10 to +35 °C |

Initial Performance (IEC Compliant)

| | |
|---------------------------------------|------------------------|
| Luminous flux tolerance | +/-10% |
| Initial chromaticity | (0.38, 0.38) SDCM ≤3.0 |
| Power consumption tolerance | +/-10% |
| Init. Color Rendering Index Tolerance | +/-2 |

Over Time Performance (IEC Compliant)

| | |
|--|-------|
| Control gear failure rate at median useful life 50000 h | 2.5 % |
| Control gear failure rate at median useful life 100000 h | 5 % |
| Lumen maintenance (EN-IEC 62722-2-1) at median useful life* 50000 h | L90 |
| Lumen maintenance (EN-IEC 62722-2-1) at median useful life* 100000 h | L80 |

Sustainability Data

| | |
|--|---|
| Sustainability rating | Unclassified |
| Repair class | Repair Class C, the driver of this luminaire can be replaced by a service technician. Special care is required during disassembly and reassembly, and specific tools may be required. Parts and documentation are available for a period of time. |
| Non-virgin material ratio of the packaging | Cardboard > 80% recycled Plastic >35% recycled |
| Packaging Recyclable content ratio | Cardboard recycling rate > 80% Plastic recycling rate > 40% |
| Packaging Material | Cardboard Plastic |

Product Data

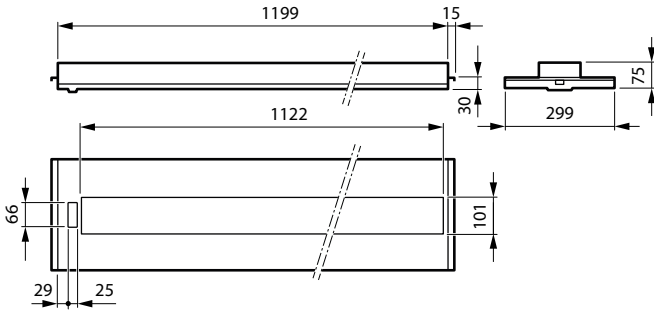
| | |
|--------------------|--------------------------------------|
| Order product name | RC453B 36S/940 DLO U5 L1200 W300 B30 |
| Full product name | RC453B 36S/940 DLO U5 L1200 W300 B30 |
| Full product code | 872016962199200 |
| Order code | 62199200 |

TrueBlend Recessed

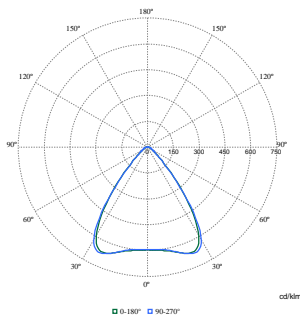
| | |
|---------------------------------|---------------|
| Material Nr. (12NC) | 910505103975 |
| Numerator - Quantity Per Pack | 1 |
| EAN/UPC - Product/Case | 8720169621992 |
| Numerator - Packs per outer box | 1 |

| | |
|---------------------|---|
| EAN/UPC - Case | 8720169621992 |
| Product family code | RC455B [TrueBlend Recessed Bandrastrer] |

Dimensional drawing



Photometric data



Polar Normal (separate) - RC450BI - 910505103975

