



TrueBlend Recessed

**RC453B42S/
940DLO9010U4ELW3W4L1200W300B30**

TrueBlend Recessed, 32 W, 1200X300 mm, B30, 4200 lm, 4000 K, CRI>90, Wireless, Interact Ready, UGR19, U4, Wieland, TP(b), ELW3h/EL-DC

1200X300 mm, Steel, White, Pure white (RAL9010), Single layer powder coating, Mounting bracket - fixed height 30 mm - For C/U profiles, Sensor ready driver Interact System ready for central emergency lighting, Upgradable sensor slot with SC200 sensor, 4200 lm, 32 W, 131 lm/W, 4000 K, (0.38, 0.38) SDCM \leq 3.0, CRI>90, UGR19, Wide beam office compliant, White reflector, Diffused lens optic, Polymethyl methacrylate, IP20 | Finger-protected, IK03 | 0.3 J, Safety class I, Plug-in connector 4-pole Wieland/Adels compatible, TP(b) diffuser flammability class, DC operated central emergency lighting, Emergency lighting 3 hours duration with Wireless Interface

Warnings and Safety

- The product is IP20 and, as such, is not protected against water ingress. Therefore, we strongly recommend that the environment in which the luminaire is to be installed is suitably checked.
- If the above advice is not taken and the luminaires are subject to water ingress, Philips / Signify cannot guarantee safe failure and the product warranty will become void.

Product data

General Information		Value ladder		Specification	
Lamp family code	42S [LED Module, system flux 4200 lm]	Warranty period			5 years
Number of gear units	1 unit				
Driver included	Yes				
Light source engine type	LED				
Service tag	Yes				
		Light Technical			
		Upward light output ratio			0
		Luminous Flux			4,200 lm

TrueBlend Recessed

Correlated Color Temperature (Nom)	4000 K
Luminous Efficacy (rated) (Nom)	131 lm/W
Color rendering index (CRI)	>90
Light source color	940 neutral white
Optic type	Wide beam office compliant
Luminaire light beam spread	76° x 74°
Unified glare rating CEN	19

Operating and Electrical

Input Voltage	220 to 240 V
Line Frequency	50 to 60 Hz
Inrush current	23 A
Inrush time	216 ms
Power Consumption	32 W
Power Factor (Fraction)	0.9
Connection	Plug-in connector 4-pole Wieland/Adels compatible
Cable	-
Number of products on MCB of 16 A type B	24
Suitable for random switching	Yes
Protection class IEC	Safety class I
Total harmonic distortion	20 %

Wiring

Connector Type	Wieland
----------------	---------

Controls and Dimming

Dimmable	Yes
Driver/power unit/transformer	Sensor ready driver Interact System ready for central emergency lighting
Control interface	Wireless
Constant light output	No
Maximum dim level	1%
Connectivity	Interact Ready
Embedded control	Upgradable sensor slot with SC200 sensor

Mechanical and Housing

Housing Material	Steel
Reflector material	Steel
Optic material	Polymethyl methacrylate
Optical cover material	Polymethyl methacrylate
Fixation material	Steel
Housing Color	White
Mounting device	-
Optical cover shape	Flat
Optical cover finish	Diffused lens optic
Reflector Finish	White reflector
Overall length	1,200 mm
Overall width	300 mm
Overall height	100 mm
Dimensions (Height x Width x Depth)	100 x 300 x 1200 mm

Ingress protection code	IP20 [Finger-protected]
Mech. impact protection code	IK03 [0.3 J]
Mounting	Mounting bracket - fixed height 30 mm - For C/U profiles
Optical cover type	Acrylic bowl/cover frosted
Net Weight (Piece)	6.170 kg

Emergency Operation

Emergency flux	520 lm
Power consumption during Central DC emergency mode	6 W
Rated duration of the emergency lighting (when fully charged)	3 hour(s)
Central Emergency	Yes
Emergency lighting	DC operated central emergency lighting Emergency lighting 3 hours duration with Wireless Interface
Emergency function testing method	Programmed automatic self testing via DALI or wireless lighting control system
Emergency lighting operation mode	Maintained

Approval and Application

Glow-wire test	Temperature 850 °C, duration 30 s
Flammability mark	For mounting on normally flammable surfaces
CE mark	Yes
ENEC mark	ENEC mark
Photobiological risk	Photobiological risk group 1 @200mm to EN62778
EU RoHS compliant	Yes
Diffuser Flammability Class	TP(b) diffuser flammability class
Performance ambient temperature Tq	25 °C
Ambient temperature range	+10 to +35 °C

Initial Performance (IEC Compliant)

Luminous flux tolerance	+/-10%
Initial chromaticity	(0.38, 0.38) SDCM ≤3.0
Power consumption tolerance	+/-10%
Init. Color Rendering Index Tolerance	+/-2

Over Time Performance (IEC Compliant)

Control gear failure rate at median useful life 50000 h	2.5 %
Control gear failure rate at median useful life 100000 h	5 %
Lumen maintenance (EN-IEC 62722-2-1) at median useful life* 50000 h	L90
Lumen maintenance (EN-IEC 62722-2-1) at median useful life* 100000 h	L80

Sustainability Data

Sustainability rating	Unclassified
-----------------------	--------------

TrueBlend Recessed

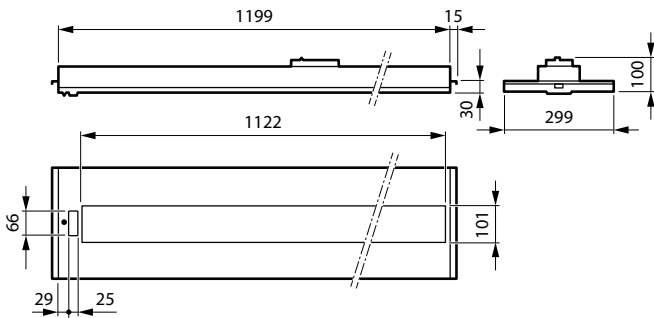
Repair class	Repair Class C, the driver of this luminaire can be replaced by a service technician. Special care is required during disassembly and reassembly, and specific tools may be required. Parts and documentation are available for a period of time.
Non-virgin material ratio of the packaging	Cardboard > 80% recycled Plastic >35% recycled
Packaging Recyclable content ratio	Cardboard recycling rate > 80% Plastic recycling rate > 40%
Packaging Material	Cardboard Plastic

Product Data

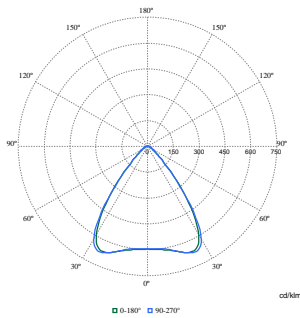
Order product name	RC453B42S/ 940DLO9010U4ELW3W4L1200W300B3 0
---------------------------	--

Full product name	RC453B42S/ 940DLO9010U4ELW3W4L1200W300B3 0
Full product code	872016962198500
Order code	910505103974
Material Nr. (12NC)	910505103974
Numerator - Quantity Per Pack	1
EAN/UPC - Product/Case	8720169621985
Numerator - Packs per outer box	1
EAN/UPC - Case	8720169621985
Product family code	RC455B [TrueBlend Recessed Bandraster]

Dimensional drawing



Photometric data



Polar Normal (separate) - RC450BI - 910505103974

TrueBlend Recessed

