



TrueBlend Recessed

RC453B 42S/940 DLO 9010 U4 L1200 W300B30

TrueBlend Recessed, 26 W, 1200x300 mm, B30, 4200 lm, 4000 K, CRI>90, Wireless, Interact Ready, UGR19, U4, TP(b), EL-DC

When specifying lighting for premium office applications, technical specifiers need to deal with a wide variety of requirements and constraints linked to ceiling types and customer/architect preferences. Philips TrueBlend is a flexible luminaire portfolio offering choice in look & feel for the architect, and mechanical fit to many different ceiling types, and a palette of optics to choose from. Philips TrueBlend is built around flexibility and choice; our new recessed office range is a perfect fit for your non-standard ceiling or renovation project where luminaires need to fit the hole of existing luminaires. A wide variety of optics, best-in-class efficacy, combined with our wellbeing led spectra, and Interact connectivity, offers choice in performance and look & feel. TrueBlend helps save energy & provide the right level of light. Not only is it compliant with the WELL Building Standard for Light, but also is rated UGR<19, which is compliant with all office norms (OC). This luminaire family is available in different lengths, light outputs, optics, housing colors, various bracket height, connectors. This offers the ultimate design flexibility and unlimited possibilities. TrueBlend luminaires offer state-of-the-art efficacy and excellent light quality (CRI>90) with upgradability features and repairability that promises a long lifetime. They are also designed for recyclability, making them a truly circular, green choice. So, TrueBlend is an all-in-one solution with superior lighting specifications combined with sustainable approach to high-performance office lighting.

Warnings and Safety

- The product is IP20 and, as such, is not protected against water ingress. Therefore, we strongly recommend that the environment in which the luminaire is to be installed is suitably checked.
- If the above advice is not taken and the luminaires are subject to water ingress, Philips / Signify cannot guarantee safe failure and the product warranty will become void.

Product data

TrueBlend Recessed

General Information	
Lamp family code	42S [LED Module, system flux 4200 lm]
Number of gear units	1 unit
Driver included	Yes
Light source engine type	LED
Service tag	Yes
Value ladder	Specification
Warranty period	5 years

Light Technical	
Upward light output ratio	0
Luminous Flux	4,200 lm
Correlated Color Temperature (Nom)	4000 K
Luminous Efficacy (rated) (Nom)	162 lm/W
Color rendering index (CRI)	>90
Light source color	940 neutral white
Optic type	Wide beam office compliant
Luminaire light beam spread	76° x 74°
Unified glare rating CEN	19

Operating and Electrical	
Input Voltage	220 to 240 V
Line Frequency	50 to 60 Hz
Inrush current	23 A
Inrush time	216 ms
Power Consumption	26 W
Power Factor (Fraction)	0.9
Connection	Push-in connector 3-pole
Cable	-
Number of products on MCB of 16 A type B	24
Suitable for random switching	Yes
Protection class IEC	Safety class I
Total harmonic distortion	20 %

Controls and Dimming	
Dimmable	Yes
Driver/power unit/transformer	Sensor ready driver Interact System ready for central emergency lighting
Control interface	Wireless
Constant light output	No
Maximum dim level	1%
Connectivity	Interact Ready
Embedded control	Upgradable sensor slot with SC200 sensor

Mechanical and Housing	
Housing Material	Steel
Reflector material	Steel
Optic material	Polymethyl methacrylate
Optical cover material	Polymethyl methacrylate
Fixation material	Steel
Housing Color	White

Mounting device	-
Optical cover shape	Flat
Optical cover finish	Diffused lens optic
Reflector Finish	White reflector
Overall length	1,200 mm
Overall width	300 mm
Overall height	75 mm
Dimensions (Height x Width x Depth)	75 x 300 x 1200 mm
Ingress protection code	IP20 [Finger-protected]
Mech. impact protection code	IK03 [0.3 J]
Mounting	Mounting bracket - fixed height 30 mm - For C/U profiles
Optical cover type	Acrylic bowl/cover frosted
Net Weight (Piece)	5.670 kg

Emergency Operation	
Central Emergency	Yes
Emergency lighting	DC operated central emergency lighting
Emergency lighting operation mode	Maintained

Approval and Application	
Glow-wire test	Temperature 850 °C, duration 30 s
Flammability mark	For mounting on normally flammable surfaces
CE mark	Yes
ENEC mark	ENEC mark
Photobiological risk	Photobiological risk group 1 @200mm to EN62778
EU RoHS compliant	Yes
Diffuser Flammability Class	TP(b) diffuser flammability class
Performance ambient temperature Tq	25 °C
Ambient temperature range	+10 to +35 °C

Initial Performance (IEC Compliant)	
Luminous flux tolerance	+/-10%
Initial chromaticity	(0.38, 0.38) SDCM ≤3.0
Power consumption tolerance	+/-10%
Init. Color Rendering Index Tolerance	+/-2

Over Time Performance (IEC Compliant)	
Control gear failure rate at median useful life 50000 h	2.5 %
Control gear failure rate at median useful life 100000 h	5 %
Lumen maintenance (EN-IEC 62722-2-1) at median useful life* 50000 h	L90
Lumen maintenance (EN-IEC 62722-2-1) at median useful life* 100000 h	L80

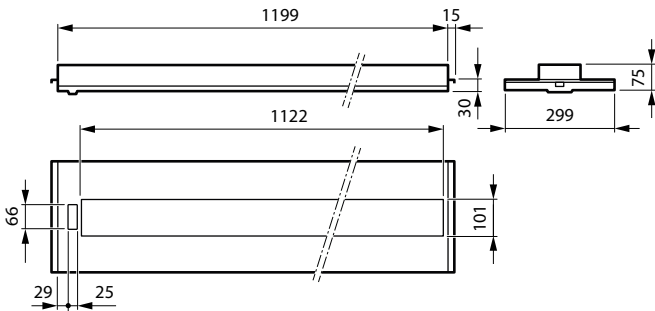
Sustainability Data	
Sustainability rating	Unclassified

TrueBlend Recessed

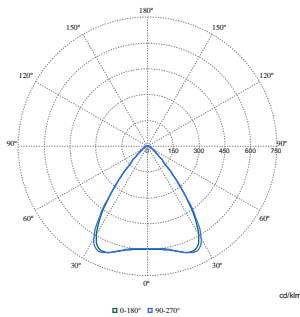
Repair class	Repair Class C, the driver of this luminaire can be replaced by a service technician. Special care is required during disassembly and reassembly, and specific tools may be required. Parts and documentation are available for a period of time.
Product Data	
Order product name	RC453B 42S/940 DLO 9010 U4 L1200 W300B30
Full product name	RC453B 42S/940 DLO 9010 U4 L1200 W300B30

Full product code	872016962197800
Order code	62197800
Material Nr. (12NC)	910505103973
Numerator - Quantity Per Pack	1
EAN/UPC - Product/Case	8720169621978
Numerator - Packs per outer box	1
EAN/UPC - Case	8720169621978
Product family code	RC455B [TrueBlend Recessed Bandrastrer]

Dimensional drawing



Photometric data



Polar Normal (separate) - RC450BI - 910505103973

TrueBlend Recessed

