



LuxSpace Accent Compact Elbow

RS772B 49S/827 PSU-E HWB WH

LuxSpace Accent Compact Elbow, Recessed, 37.5 W, D125 mm, 5000 lm, 2700 K, High-reflective metal reflector Wide beam 40 to 80 degrees, PerfectAccent reflector, White, IP20

Recessed, D125 mm, Aluminum, White, Signal white (RAL9003), Recessed, Power supply unit external (On/Off), 5000 lm, 37.5 W, 133 lm/W, 2700 K, (0.458,0.410)<3, High-reflective metal reflector Wide beam 40 to 80 degrees, PerfectAccent reflector, IP20 | Finger-protected, IK02 | 0.2 J standard, Safety class II, 2 Push-in connector 2-pole

Warnings and Safety

- All photometrical data is calculated without optional front glass. Flux should be reduced by 3.5% when using a front glass
- Cleaning of the optic should only be done with pressurized air. Touching the LED or reflector is forbidden. For food preparation areas and areas with high levels of dust, the use of the optional front glass is strongly advised, as it can be cleaned with a (dry) microfiber cloth
- During maintenance, the product must be switched off and cooled down
- The product must be installed out of arm's reach. Manipulating the product when hot is only possible with an insulated glove

Product data

| General Information | |
|--------------------------|---------------|
| Light source replaceable | No |
| Number of gear units | 1 unit |
| Driver included | Yes |
| Service tag | Yes |
| Lighting Technology | LED |
| Value ladder | Specification |

| Warranty period | 5 years |
|------------------------------------|----------|
| Light Technical | |
| Luminous Flux | 5,000 lm |
| Correlated Color Temperature (Nom) | 2700 K |
| Luminous Efficacy (rated) (Nom) | 133 lm/W |
| Color rendering index (CRI) | >80 |

LuxSpace Accent Compact Elbow

| | |
|-----------------------------|---|
| Beam angle of light source | 120 degree(s) |
| Light source color | 827 warm white |
| Optic type | High-reflective metal reflector Wide beam 40 to 80 degrees |
| Luminaire light beam spread | 36° |
| Unified glare rating CEN | 22 |

Operating and Electrical

| | |
|--|----------------------------|
| Input Voltage | 220 to 240 V |
| Line Frequency | 50 to 60 Hz |
| Initial CLO power consumption | - W |
| Average CLO power consumption | - W |
| Inrush current | 12 A |
| Inrush time | 100 ms |
| Power Consumption | 37.5 W |
| Power Factor (Fraction) | 0.9 |
| Connection | 2 Push-in connector 2-pole |
| Cable | - |
| Number of products on MCB of 16 A type B | 24 |
| Suitable for random switching | No |
| Protection class IEC | Safety class II |
| Total harmonic distortion | 20 % |

Controls and Dimming

| | |
|-------------------------------|-------------------------------------|
| Dimmable | No |
| Driver/power unit/transformer | Power supply unit external (On/Off) |
| Constant light output | No |
| Maximum dim level | Not applicable |

Mechanical and Housing

| | |
|-------------------------------------|-------------------------|
| Housing Material | Aluminum |
| Reflector material | Aluminum |
| Optic material | Aluminum |
| Optical cover material | - |
| Fixation material | - |
| Housing Color | White |
| Optical cover finish | - |
| Reflector Finish | PerfectAccent reflector |
| Overall length | 0 mm |
| Overall width | 0 mm |
| Overall height | 150 mm |
| Overall diameter | 134 mm |
| Dimensions (Height x Width x Depth) | 150 x 0 x 0 mm |
| Nominal Ceiling cut-out diameter | 125 mm |
| Ingress protection code | IP20 [Finger-protected] |
| Mech. impact protection code | IK02 [0.2 J standard] |
| Mounting | Recessed |
| Net Weight (Piece) | 1.000 kg |

Approval and Application

| | |
|----------------|-----------------------------------|
| Glow-wire test | Temperature 650 °C, duration 30 s |
|----------------|-----------------------------------|

| | |
|---|--|
| Flammability mark | For mounting on normally flammable surfaces |
| CE mark | Yes |
| ENEC mark | ENEC mark |
| Photobiological risk | Photobiological risk group 1 @200mm to EN62778 |
| EU RoHS compliant | Yes |
| Performance ambient temperature Tq | 25 °C |
| Flickering value (PstLM) - Flickering value as 1 per EN 61000-3-3 | |
| Stroboscopic effect visibility measure (SVM) | 0.5 |
| Ambient temperature range | +10 to +35 °C |

Initial Performance (IEC Compliant)

| | |
|--|-----------------|
| Luminous flux tolerance | +/-10% |
| Initial chromaticity | (0.458,0.410)<3 |
| Power consumption tolerance | +/-10% |
| Standard Deviation of Colour Matching (McAdam ellipse) | SDCM≤3 |

Over Time Performance (IEC Compliant)

| | |
|--|------|
| Control gear failure rate at median useful life 50000 h | 10 % |
| Control gear failure rate at median useful life 100000 h | 10 % |
| Lumen maintenance (EN-IEC 62722-2-1) at median useful life* 50000 h | L90 |
| Lumen maintenance (EN-IEC 62722-2-1) at median useful life* 100000 h | L85 |

Sustainability Data

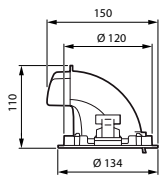
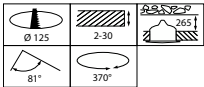
| | |
|--|---|
| Sustainability rating | Signify Circle |
| Repair class | Repair Class B, the driver and light source of this luminaire can be replaced by a service technician. Parts and documentation are available for an extended period of time. |
| Embedded carbon (A1-A3) | 6.22 kg CO _{2e} |
| Product non-virgin material ratio | 8.31 % |
| Recyclable content ratio of the finished product | 12.5 % |
| GWP total B6 (kg CO _{2eq}) Declared Unit | Please calculate using your local energy mix value: Power Declared Unit (kW) * Service life (hrs) Declared Unit * Energy mix (kg CO _{2eq} / kWh) |
| GWP total B6 (kg CO _{2eq}) Functional Unit | Please calculate using your local energy mix value: Power Declared Unit (kW) * 1000 (lm) /Lumen output (lm) Declared Unit * 35000 (hrs) * Energy mix (kg CO _{2eq} / kWh) |
| Non-virgin material ratio of the packaging | Cardboard > 80% recycled |
| Packaging Recyclable content ratio | Cardboard recycling rate > 80% |

LuxSpace Accent Compact Elbow

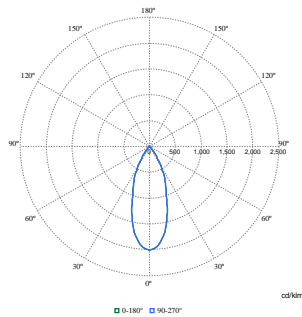
| | |
|---------------------|-----------------------------|
| Packaging Material | Cardboard |
| Product Data | |
| Order product name | RS772B 49S/827 PSU-E HWB WH |
| Full product name | RS772B 49S/827 PSU-E HWB WH |
| Full product code | 871869997930000 |
| Order code | 97930000 |
| Material Nr. (12NC) | 910505101616 |

| | |
|---------------------------------|--|
| Numerator - Quantity Per Pack | 1 |
| EAN/UPC - Product/Case | 8718699979300 |
| Numerator - Packs per outer box | 1 |
| EAN/UPC - Case | 8718699979300 |
| Product family code | RS772B [LUXSPACE ACCENT COMPACT ELBOW RPO] |

Dimensional drawing



Photometric data



Polar Normal (separate) - RS770BI - 910505101616

