



CoreLine Wall-mounted

WL140V LED20S/840 PSED ELB3 WH

CoreLine Wall-mounted, 25 W, D390 mm, 2200 lm, 4000 K, DALI, IP65, ELB3h/EL-DC

CoreLine wall-mounted solutions deliver on the CoreLine promise of innovative, easy-to install and high-quality luminaires. These circular-shaped, surface-mounted luminaires are suitable for both ceiling and wall installations and are easy to apply in circulation areas such as corridors, hallways and staircases. The modern, unobtrusive design, combined with a homogeneous light distribution, ensures this luminaire will blend into the architecture of most buildings. All-in features provide up to three lumen packages and three color temperature options in one luminaire. Installers can easily fit the luminaire according to the application need on site. And thanks to the push-in connectors, installation of the CoreLine WL140V is fast and straightforward. This family includes Interact ready luminaires with integrated wireless communications, ready for use with Interact gateways, sensors and software.

Warnings and Safety

- For outdoor operations; wall-mounted applications only and all cables should run indoors with a maximum distance of 10 meters

Product data

General Information		Serviceability class	
Light source replaceable	No	Class C, luminaire without serviceable parts, not serviceable	
Number of gear units	1 unit	Warranty period	5 years
Driver included	Yes	Sustainability rating	Unclassified
Lighting Technology	LED	Light Technical	
Value ladder	Performance	Luminous Flux	2,200 lm

CoreLine Wall-mounted

Saturated Red (R9)	<50
Correlated Color Temperature (Nom)	4000 K
Luminous Efficacy (rated) (Nom)	88 lm/W
Color rendering index (CRI)	>80
Beam angle of light source	120 degree(s)
Light source color	840 neutral white
Optic type	Symmetrical
Luminaire light beam spread	120° x 120°
Unified glare rating CEN	24

Operating and Electrical

Input Voltage	220–240 V
Line Frequency	50 or 60 Hz
Initial CLO power consumption	- W
Average CLO power consumption	- W
Inrush current	18 A
Inrush time	0.025 ms
Power Consumption	25 W
Power Factor (Fraction)	0.9
Connection	Push-in connector 6-pole
Cable	-
Number of products on MCB of 16 A type B	34
Suitable for random switching	No
Protection class IEC	Safety class II
Total harmonic distortion	20 %

Controls and Dimming

Dimmable	Yes
Driver/power unit/transformer	Power supply unit with DALI interface, DC compatible for central emergency lighting (integrated)
Control interface	DALI
Constant light output	No
Maximum dim level	1%

Mechanical and Housing

Housing Material	Polycarbonate
Reflector material	Polycarbonate
Optic material	Polycarbonate
Optical cover material	Polycarbonate
Fixation material	-
Housing Color	White
Optical cover finish	Opal
Overall height	85 mm
Overall diameter	390 mm
Ingress protection code	IP65 [Dust penetration-protected, jet-proof]
Mech. impact protection code	IK10 [20 J vandal-resistant]
Net Weight (Piece)	1.900 kg

Emergency Operation

Emergency flux	350 lm
----------------	--------

Power consumption during Central DC emergency mode	3 W
Rated duration of the emergency lighting (when fully charged)	3 hour(s)
Central Emergency	Yes
Type of emergency lighting battery	Lithium
Emergency lighting	Emergency lighting 3 hours duration basic version DC operated central emergency lighting
Emergency function testing method	Manual / Test button
Emergency lighting operation mode	Maintained

Approval and Application

Glow-wire test	Temperature 850 °C, duration 30 s
Flammability mark	-
CE mark	Yes
ENEC mark	-
Photobiological risk	Photobiological risk group 0 @200mm to EN62778
Photobiological risk specification	0.2 m
EU RoHS compliant	Yes
Performance ambient temperature Tq	25 °C
Flickering value (PstLM) - Flickering value as per EN 61000-3-3	1
Stroboscopic effect visibility measure (SVM)	1.6
Ambient temperature range	0 to +25 °C

Initial Performance (IEC Compliant)

Luminous flux tolerance	+/-10%
Initial chromaticity	(0.3818,0.3797) SDCM <3
Power consumption tolerance	+/-10%
Standard Deviation of Colour Matching (McAdam ellipse)	SDCM≤3

Over Time Performance (IEC Compliant)

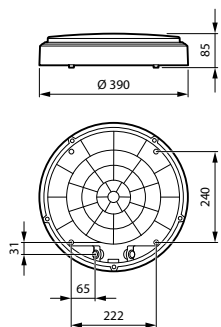
Control gear failure rate at median useful life 50000 h	5 %
Lumen maintenance (EN-IEC 62722-2-1) at median useful life* 50000 h	L80

Product Data

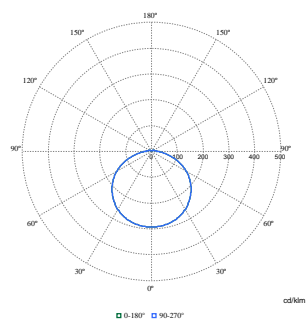
Order product name	WL140V LED20S/840 PSED ELB3 WH
Full product name	WL140V LED20S/840 PSED ELB3 WH
Full product code	871869997869300
Order code	910505101555
Material Nr. (12NC)	910505101555
Numerator - Quantity Per Pack	1
EAN/UPC - Product/Case	8718699978693
Numerator - Packs per outer box	1
EAN/UPC - Case	8718699978693
Product family code	WL140V [Coreline Gen3 Wall Luminaire]

CoreLine Wall-mounted

Dimensional drawing



Photometric data



Polar Normal (separate) - WL140VI - 910505101555

