



# CoreLine Wall-mounted

## WL140V LED34S/830 PSED WH

CoreLine Wall-mounted, 35.5 W, D390 mm, 3350 lm, 3000 K, DALI, IP65, EL-DC

Whether for a new building or renovation of an existing space, customers want lighting solutions that provide quality of light and substantial energy and maintenance savings. The new CoreLine Wall-mounted range of LED products can be used to replace traditional wall-mounted luminaires incorporating compact fluorescent lamps. The process of selecting, installing and maintaining is so easy – it's a simple switch.

### Warnings and Safety

- For outdoor operations; wall-mounted applications only and all cables should run indoors with a maximum distance of 10 meters

### Product data

General Information	
Light source replaceable	No
Number of gear units	1 unit
Driver included	Yes
Lighting Technology	LED
Value ladder	Performance
Serviceability class	Class C, luminaire without serviceable parts, not serviceable
Warranty period	5 years
Sustainability rating	Unclassified

Light Technical	
Luminous Flux	3,350 lm
Saturated Red (R9)	<50
Correlated Color Temperature (Nom)	3000 K
Luminous Efficacy (rated) (Nom)	94 lm/W
Color rendering index (CRI)	>80
Beam angle of light source	120 degree(s)
Light source color	830 warm white
Optic type	Symmetrical
Luminaire light beam spread	120° x 120°
Unified glare rating CEN	25

## CoreLine Wall-mounted

Operating and Electrical	
Input Voltage	220-240 V
Line Frequency	50 or 60 Hz
Initial CLO power consumption	- W
Average CLO power consumption	- W
Inrush current	18 A
Inrush time	0.025 ms
Power Consumption	35.5 W
Power Factor (Fraction)	0.9
Connection	Push-in connector 6-pole
Cable	-
Number of products on MCB of 16 A type B	34
Suitable for random switching	No
Protection class IEC	Safety class II
Total harmonic distortion	20 %

Controls and Dimming	
Dimmable	Yes
Driver/power unit/transformer	Power supply unit with DALI interface, DC compatible for central emergency lighting (integrated)
Control interface	DALI
Constant light output	No
Maximum dim level	1%

Mechanical and Housing	
Housing Material	Polycarbonate
Reflector material	Polycarbonate
Optic material	Polycarbonate
Optical cover material	Polycarbonate
Fixation material	-
Housing Color	White
Optical cover finish	Opal
Overall height	85 mm
Overall diameter	390 mm
Ingress protection code	IP65 [Dust penetration-protected, jet-proof]
Mech. impact protection code	IK10 [20 J vandal-resistant]
Net Weight (Piece)	1.900 kg

Emergency Operation	
Emergency flux	350 lm
Power consumption during Central DC emergency mode	3 W
Central Emergency	Yes

Emergency lighting	DC operated central emergency lighting
Emergency lighting operation mode	Maintained

Approval and Application	
Glow-wire test	Temperature 650 °C, duration 30 s
Flammability mark	-
CE mark	Yes
ENEC mark	-
Photobiological risk	Photobiological risk group 0 @200mm to EN62778
Photobiological risk specification	0.2 m
EU RoHS compliant	Yes
Performance ambient temperature Tq	25 °C
Flickering value (PstLM) - Flickering value as per EN 61000-3-3	1
Stroboscopic effect visibility measure (SVM)	1.6
Ambient temperature range	0 to +25 °C

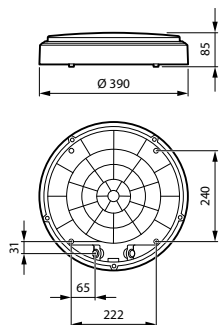
Initial Performance (IEC Compliant)	
Luminous flux tolerance	+/-10%
Initial chromaticity	(0.4338,0.4030) SDCM <3
Power consumption tolerance	+/-10%
Standard Deviation of Colour Matching (McAdam ellipse)	SDCM≤3

Over Time Performance (IEC Compliant)	
Control gear failure rate at median useful life 50000 h	5 %
Lumen maintenance (EN-IEC 62722-2-1) at median useful life* 50000 h	L80

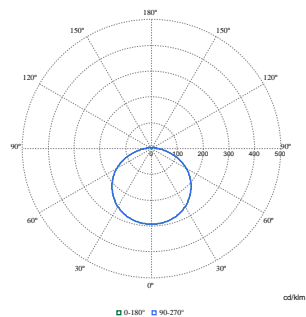
Product Data	
Order product name	WL140V LED34S/830 PSED WH
Full product name	WL140V LED34S/830 PSED WH
Full product code	871869997856300
Order code	910505101542
Material Nr. (12NC)	910505101542
Numerator - Quantity Per Pack	1
EAN/UPC - Product/Case	8718699978563
Numerator - Packs per outer box	1
EAN/UPC - Case	8718699978563
Product family code	WL140V [Coreline Gen3 Wall Luminaire]

# CoreLine Wall-mounted

## Dimensional drawing



## Photometric data



Polar Normal (separate) - WL140VI - 910505101542

