

BrightSites T-Series Streamline

Signify's BrightSites Streamline Telecom Pole enables broadband deployments to be accomplished in an aesthetically pleasing manner. The integrated pole conceals wireless network equipment, such as cables and radios, in an attractive design to closely match existing infrastructure. BrightSites Streamline poles come in a range of colors, heights, and configurations. When combined with Signify's innovative LED luminaires and controls, the BrightSites' poles are best in-class technologies, allowing for a reduction in energy cost, promoting safer environments and are the infrastructure of the future. Customized configuration is possible, please consult our factory for the request.

Base

Structural steel base, hot-dip galvanized for corrosion resistance in outdoor environment. Base is enclosed by extruded aluminum powder-coated side panels and two powder-coated extruded aluminum doors for aesthetics and access to radios and power equipment inside. Concealed hinged doors are secured by keyed lock and tamper-resistance fasteners.

Radio Bay – Single tenant, supports up to four (4) Ericsson radios or three (3) Nokia Radios with mounting brackets, diplexer(s), fan tray and fans.

Auxiliary Bay supports power distribution unit with breakers, optional ANSI C12.7 certified, utility grade wireless meter.

Mid-pole

9" round, steel welded construction, hot-dipped galvanized and wet spray for corrosion resistance in outdoor environment. Mid-pole houses bulkhead connectors, RF cables and Luminaire power wiring. Mid-pole provides Luminaire mounting connection for single or twin mount arms. Mount arms are available in 4, 6 or 8 ft. lengths.

T-Series

Streamline



System Description and Technical Specifications

Anchor bolt and transition covers

Two-piece powder-coated sandcast, mechanically fastened to pole with stainless steel tamper resistant hardware and come in two styles: (T) Traditional and (C) Contemporary.

Wireless Network

Multiband support – AWS (1695–2690MHz); PCS (1850–1995MHz); CBRS (3550–3700MHz); and LAA (5150–5925MHz)

Electrical

120VAC/240VAC Power Distribution Unit (PDU) with 100A main disconnect. Up to six duplex branch breakers providing (12) 120VAC circuits which can be bridged to provide up to (6) double-pole 240VAC circuits. Integral Surge Protection Device offering unique protection levels for wireless and small cell applications. NEMA 4 rated enclosure mounted within base. Outlet – 120VAC courtesy outlet included in PDU available for field maintenance wiring.

Meter

A meter socket is installed inside the pole and meter to be supplied by others.

Finish

Color in accordance with the AAMA 2603 standard. Application of polyester powder coat paint (4 mils/100 microns) with 1 mils / 24 microns of tolerance. The Thermosetting resins provides a discoloration resistant finish in accordance with the ASTM D2244 standard, as well as luster retention in keeping with the ASTM D523 standard and humidity proof in accordance with the ASTM D2247 standard. The surface treatment achieves a minimum of 2000 hours for salt spray resistant finish in accordance with testing performed and per ASTM B117 standard.

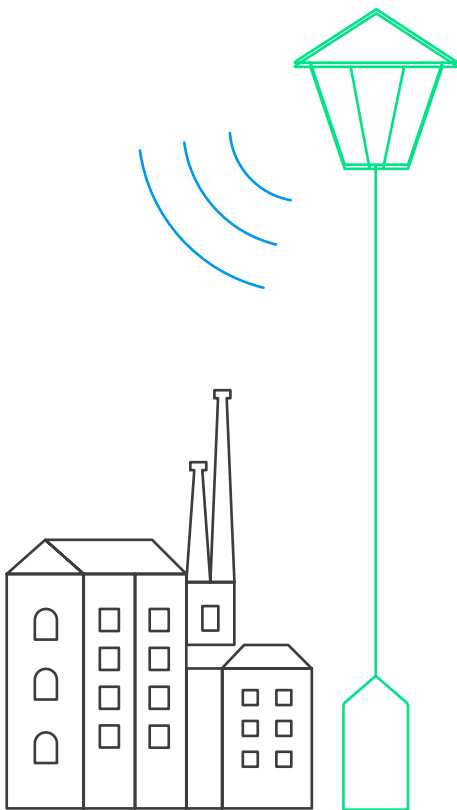
For larger projects where a custom color is required, contact the factory for more information.

Manufacturing Standard

The electronic components sensitive to electrostatic discharge (ESD) are assembled in compliance with IEC61340-5-1 and ANSI/ESD S20.20 standards to eliminate ESD events that could decrease the useful life of the product.

Certifications and Compliance

Manufactured to ISO 9001:2008 Standards. ETL listed per UL1598, IEC – 62368-1, 60950-22 (IT Equipment). ETL listed to US safety standards for wet locations. Telecom – NEBS GR487 CORE



Streamline – Configuration Sheet

Ordering Guide: Telecom Pole

example: T4101EASC-30AS16NEIGY

Telecom Series	Carrier Bracketry	Wiring Configuration	Base Shape	Covers	Luminaire Height	Color
<input type="checkbox"/> T4101 RF/Antenna Ready	<input type="checkbox"/> E ⁶ Ericsson	<input type="checkbox"/> A ¹ Config A	<input type="checkbox"/> S Smooth Base	<input type="checkbox"/> T Traditional	<input type="checkbox"/> 28 28 FT.	<input type="checkbox"/> A Smooth/Gloss Black
<input type="checkbox"/> T4201 GR package	<input type="checkbox"/> K ⁶ Nokia	<input type="checkbox"/> B ¹ Config B		<input type="checkbox"/> C Contemporary	<input type="checkbox"/> 30 30 FT.	<input type="checkbox"/> GY3 Smooth/Gloss Gray
<input type="checkbox"/> T4301 Structural Package	<input type="checkbox"/> N ⁷ None	<input type="checkbox"/> C ¹ Config C			<input type="checkbox"/> 32 32 FT.	<input type="checkbox"/> RAL Smooth/Gloss RAL
		<input type="checkbox"/> D ¹ Config D				
		<input type="checkbox"/> E ¹ Config E				
		<input type="checkbox"/> F ¹ Config F				
		<input type="checkbox"/> G ¹ Config G				
		<input type="checkbox"/> N None				

Ordering Guide: (continued)

Roadway Arm ² Quantity	Roadway Arm Length	Roadway Arm Orientation	Voltage	Electric Meter Socket ³	Antenna Compatibility ⁴	5G mmW Ready ⁵
<input type="checkbox"/> S1 Single, Single Power	<input type="checkbox"/> 4 4 FT.	<input type="checkbox"/> E East	<input type="checkbox"/> E ⁶ 120V	<input type="checkbox"/> I ⁶ Internal	<input type="checkbox"/> G Galtronics	<input type="checkbox"/> Y ⁶ Yes
<input type="checkbox"/> T1 Twin, Single Power	<input type="checkbox"/> 6 6 FT.	<input type="checkbox"/> N North	<input type="checkbox"/> H ⁶ 240V	<input type="checkbox"/> N None	<input type="checkbox"/> J JMA Wireless	<input type="checkbox"/> N No
<input type="checkbox"/> T2 Twin, Separate Power	<input type="checkbox"/> 8 8 FT.	<input type="checkbox"/> S South	<input type="checkbox"/> N ⁷ None		<input type="checkbox"/> U Universal	
		<input type="checkbox"/> W West			<input type="checkbox"/> N None	
		<input type="checkbox"/> T Twin, North/South				

Ordering Guide: Arm Coding

example: TA4001-AS4

Telecom Arm	-	Color	Roadway Arm Quantity	Roadway Arm Length
TA4001	-	<input type="checkbox"/> A Smooth/Gloss Black	<input type="checkbox"/> S Single	<input type="checkbox"/> 4 4 FT.
		<input type="checkbox"/> GY3 Smooth/Gloss Gray	<input type="checkbox"/> T Twin	<input type="checkbox"/> 6 6 FT.
		<input type="checkbox"/> RALxxxx Smooth/Gloss RALxxxx		<input type="checkbox"/> 8 8 FT.

Ordering Guide: Anchor Bolts example: T4001AB-R/ 823500414892

Anchor Bolts
T4001AB-R
Rolled Galvanized (Standard)

Footnotes:

1. See wiring configuration table on page 7. Wiring configuration is available with T4101 series only.
2. Luminaire arms must be ordered separately. See Ordering Guide: Arm Coding. Luminaire power is always separate from RF cables.
3. Only includes a meter socket, electric meter to be provided by others.
4. Pole ships with brackets to accommodate antenna from certain vendors. Antenna to be supplied by others. Universal Antenna brands: Amphenol, Kathrein, CSS, CommScope
5. 5G mmW Ready – includes pull-wires for addition of fiber and power to top of pole to be installed in future upgrade Radome
6. Available with T4101 and T4201 series only
7. Available with T4301 series only

Streamline – Wind load Spec

Pole Data – EPA Rating(Maximum Weight per Arm)

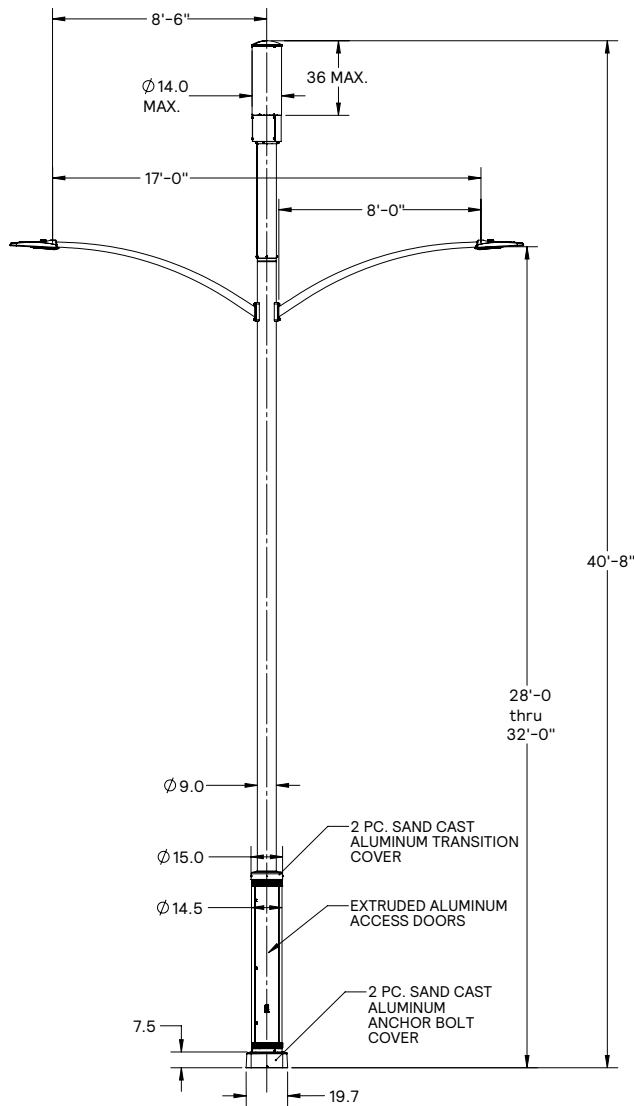
Telecom Arm	Lenght (FT.)	HT.	80 MPH	90 MPH	100 MPH	110 MPH	120 MPH	130 MPH	140 MPH	150 MPH	
			EPA (MAX. weight)								
TA4001-_-S4	4' Single	28-32FT.	3.55 (106.50)				3.25 (97.50)	2.5 (85.50)	2.5 (75.00)	2.15 (64.50)	
TA4001-_-S6	6' Single		2.15 (64.50)	2.1 (63.00)		1.8 (54.00)	1.55 (46.50)	N/A	N/A		
TA4001-_-S8	8' Single		1.35 (64.50)		1.25 (37.50)	N/A	N/A	N/A	N/A		
TA4001-_-T4	4' Twin		3.55 (106.50)				3.25 (97.50)	2.85 (85.50)	2.5 (75.00)	2.15 (64.50)	
TA4001-_-T6	6' Twin		2.15 (64.50)	2.1 (63.00)		1.8 (54.00)	1.55 (46.50)	N/A	N/A		
TA4001-_-T8	8' Twin		1.35 (40.50)		1.25 (37.50)	N/A	N/A	N/A	N/A		

Note: The recommended method for calculating EPA (Effective Projected Area) is in accordance with AASHTO 2009 standards, three second gusts and 50 year winds. EPA ratings shown are applied to arms and assume 30 lbs./sq. ft. load.

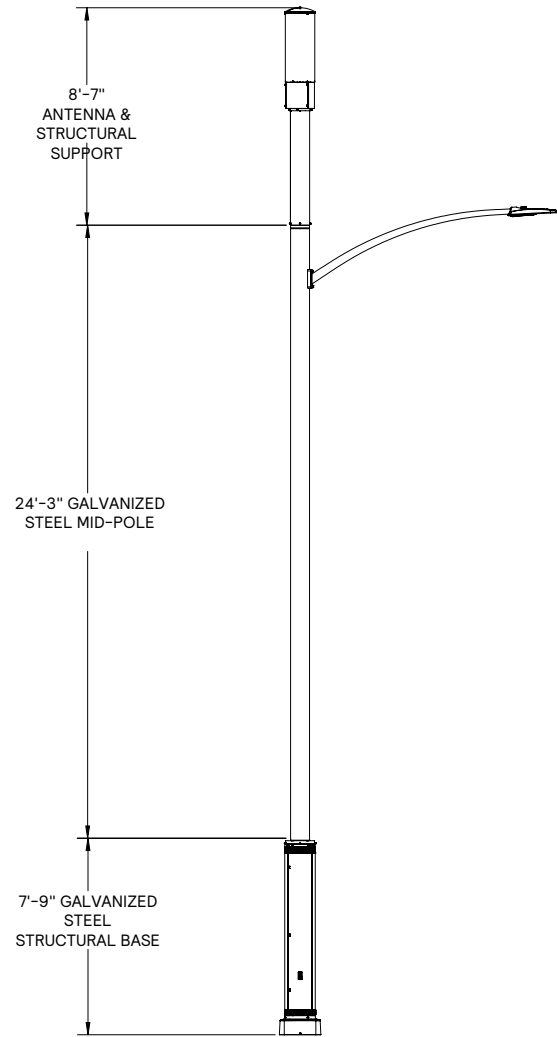
Important: Do not obstruct space between anchor plate and concrete base.



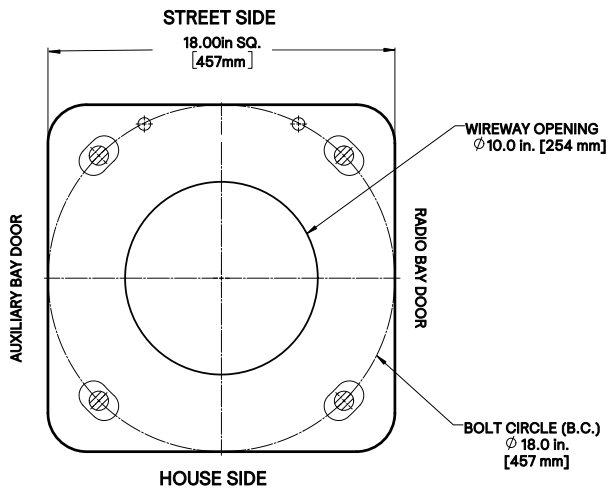
Streamline - Drawings



Streamline with Twin Arm

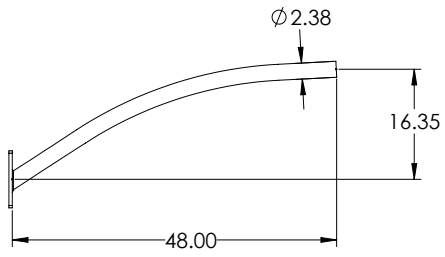


Streamline with Single Arm

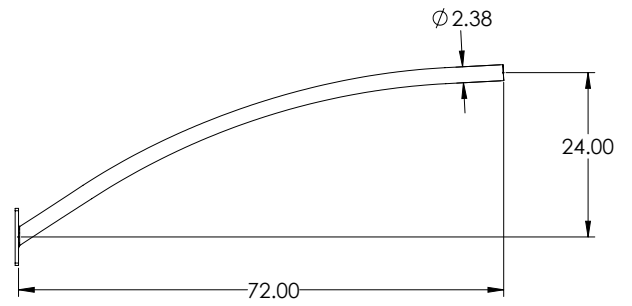


Base Plate

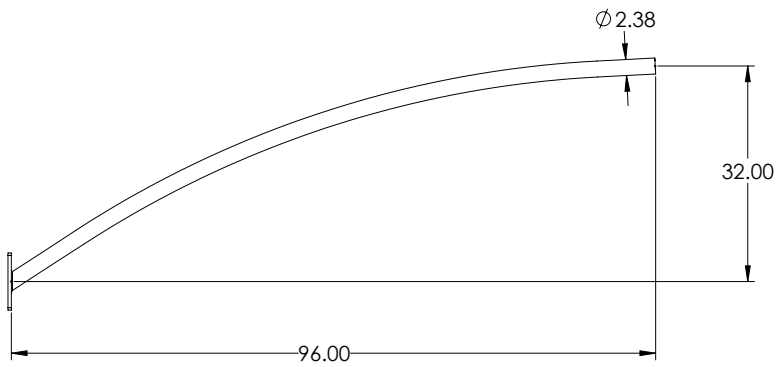
Streamline - Roadway Arms



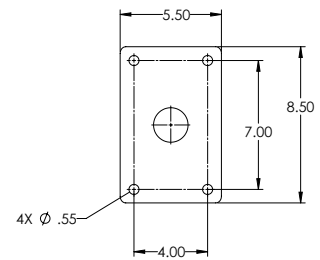
4ft Arm



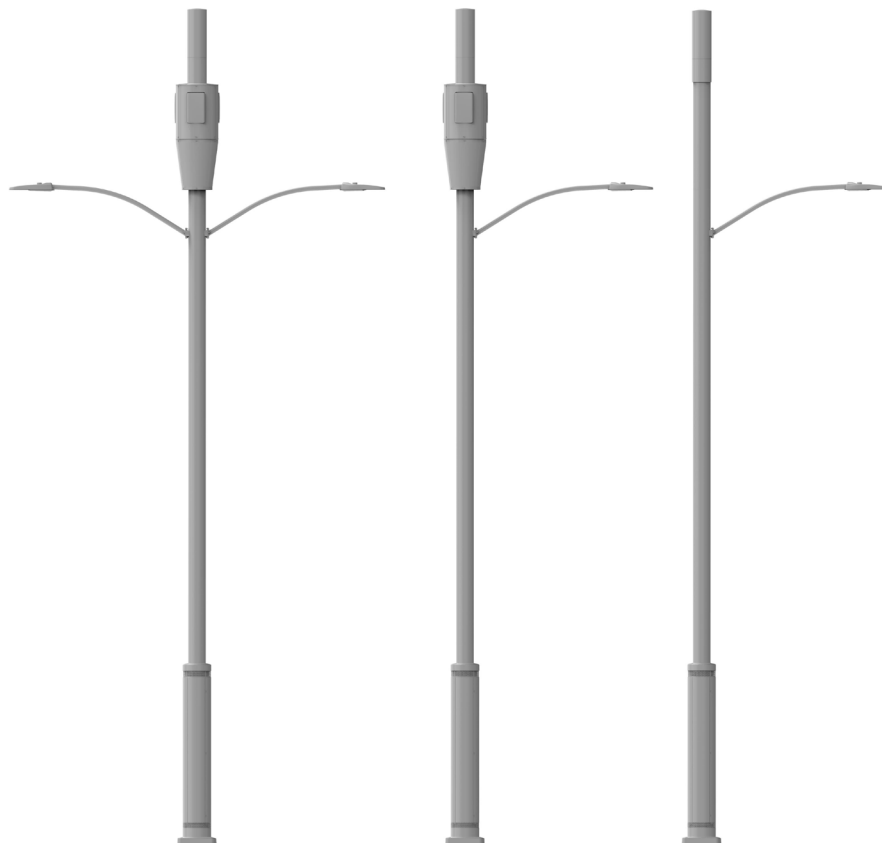
6ft Arm



8ft Arm



Mount plate



Streamline – Radio Configurations

Wiring Configurations		ERICSSON					NOKIA				
Configuration	Radio Configurations	E/// 2203 AWS	E/// 2203 PCS	E/// 2205 LAA	E/// 2208 CBRS	# of open slots	Nokia AHFB AWS	Nokia AHIB PCS	Nokia AZRB LAA	Nokia AZRB CBRS	# of open slots
A	AWS 4T4R, PCS 4T4R	2	2			0	1	1			1
B	AWS 2T2R, CBRS 4T4R, PCS 2T2R	1	1		2	0	Configuration not available				
C	AWS 4T4R, CBRS 4T4R	2			2	0	1			1	1
D	PCS 4T4R, CBRS 4T4R		2		2	0		1		1	1
E	AWS 2T2R, LAA 2T2R, PCS 2T2R CBRS 2T2R	1	1	1	1	0	Configuration not available				
F	AWS 4T4R, CBRS 4T4R, PCS 4T4R	Configuration not available					1	1		1	0
G	AWS 4T4R, LAA 2T2R, PCS 4T4R	Configuration not available					1	1	1*		0



© 2019 Signify Holding. All rights reserved. This document may be subjected to change. No representation or warranty as to the accuracy or completeness of the information included herein is given and any liability for any action in reliance thereon is disclaimed. All trademarks are owned by Signify Holding or their respective owners.

Signify North America Corporation
200 Franklin Square Drive,
Somerset, NJ 08873
Telephone 855-486-2216

www.signify.com