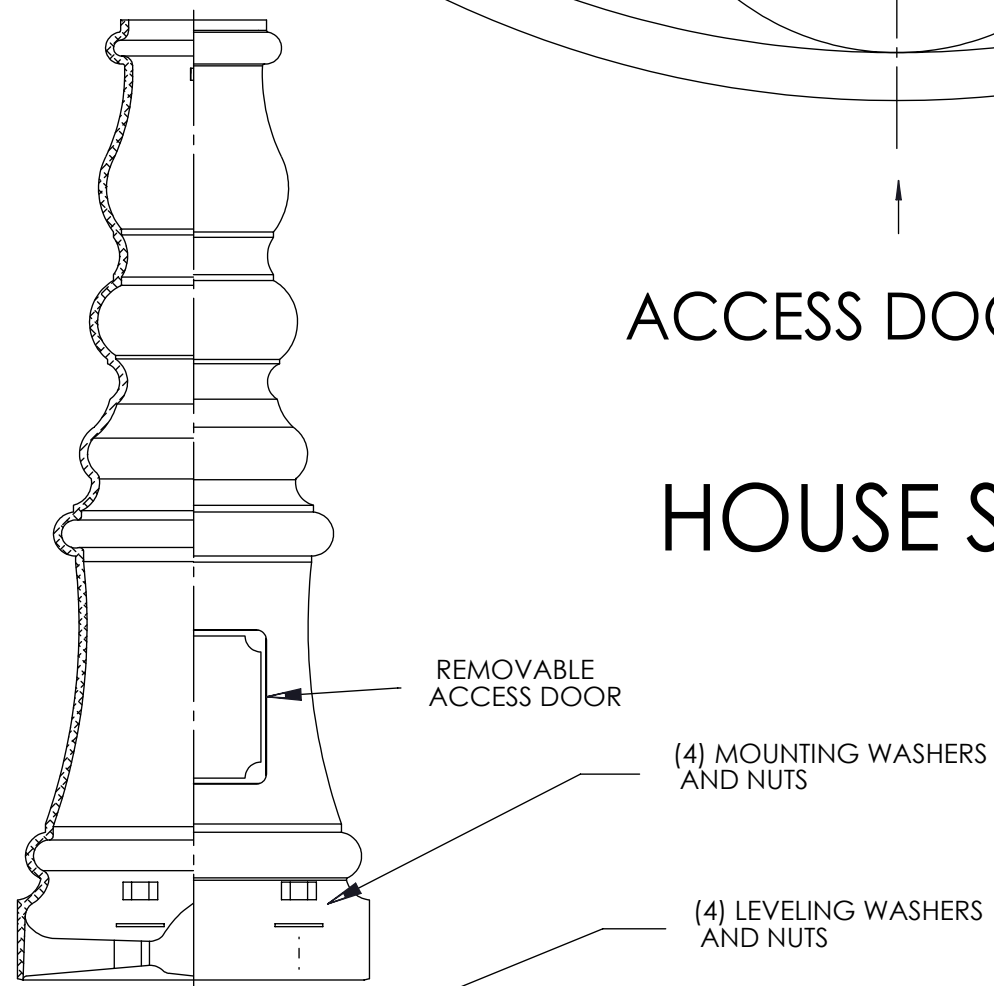


VERIFY BOLD LINE IS 7" LONG

ACCESS DOOR

HOUSE SIDE

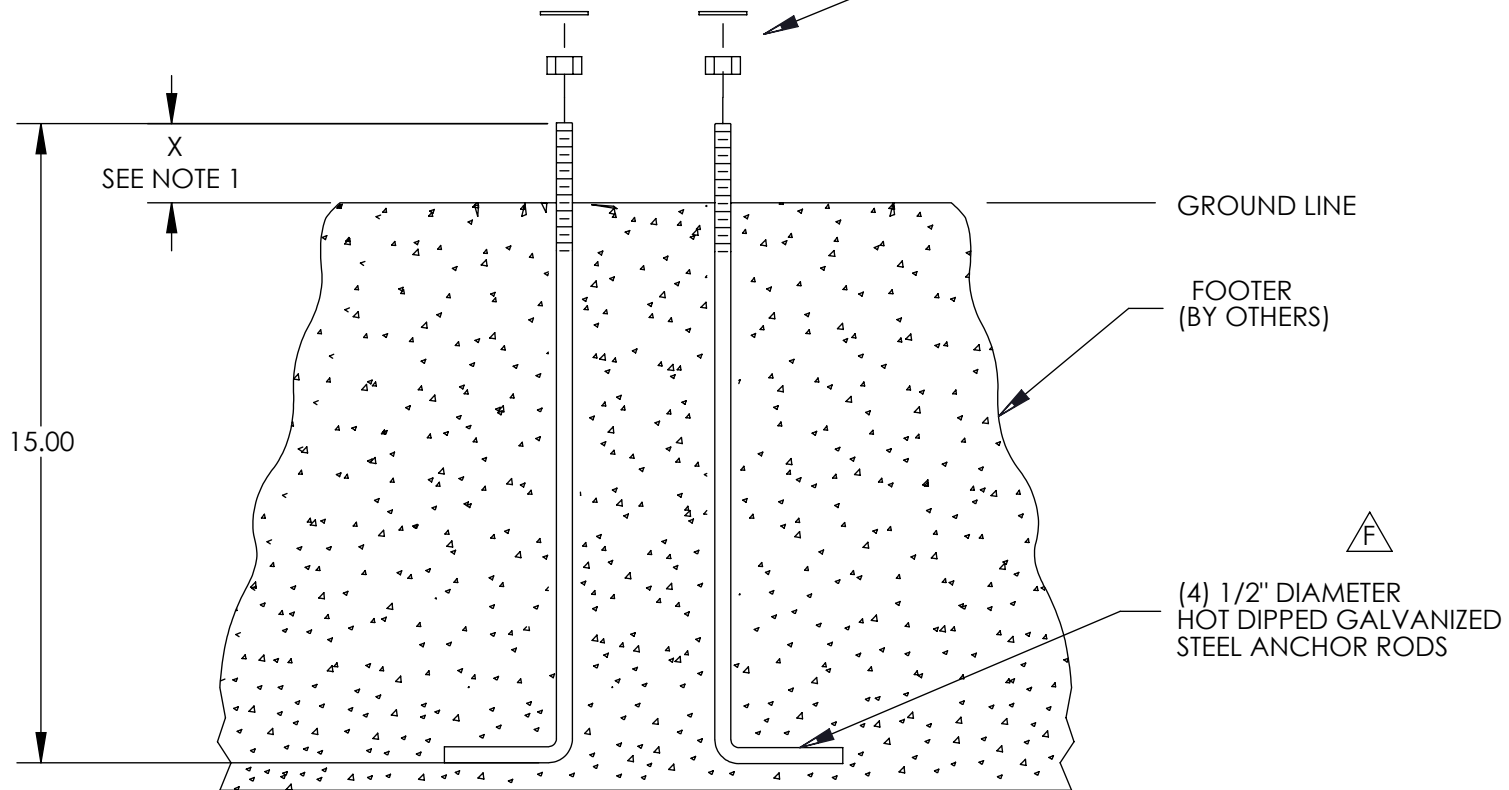


NOTES:

1. STRONGLY RECOMMENDED TO USE LEVELING NUTS TO MOUNT POST BASE. IF FOUNDATION IS NOT LEVEL, INCREASE "X" DIMENSION ACCORDINGLY WHEN USING LEVELING NUTS WITH WASHERS.

X = 2 1/2" WITH LEVELING NUTS
X = 1 3/4" WITHOUT LEVELING NUTS

2. IF USING GROUTING TO CONCEAL GAP BETWEEN BASE AND FOUNDATION, ALLOW FOR WATER DRAINAGE.



SCALE 1:6

	<small>CONFIDENTIAL: This drawing is confidential and proprietary to Signify Holdings and may not be reproduced in whole or in part without the express written consent of Signify Holdings. © 2018 Signify Holdings. All rights reserved.</small>		TITLE: TEMP.AR,1150
	<small>UNLESS OTHERWISE SPECIFIED: *ALL DIMENSIONS ARE IN INCHES. *ALL THREADS ARE UNC-2B OR UNF-2B AFTER COATING. *ALL THREADS ARE TO BE VERIFIED WITH A THREAD GAGE.</small>	DRAWN BY: M.N. BANKERT CHECKED BY: B. DORON APPR BY: W.H. DORON	DATE: 4/9/99 DATE: 8/4/09 DATE: 4/9/99
* DO NOT SCALE THIS DRAWING *		EF-04-01-11 Rev.09	SCALE 1:1 SHEET 1 OF 1 PART NO: T01700459