

# LIGHTOLIER

by @signify

## Ideal Illumination from the brand you trust

**LyteProfile LED**

3" | 4" | 6" downlights  
with AccuRender technology





# LyteProfile

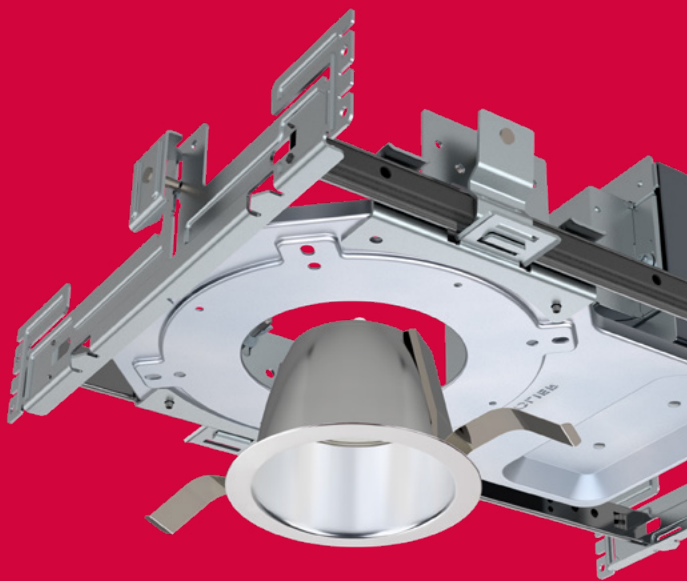
**Your lighting toolbox has expanded, once again...**

Lightolier is a global market leader widely recognized for innovative LED lighting solutions with an unmatched commitment to technology leadership, reliability, visual appeal and high performance. Lightolier's Calculite LED generation 3 optics allow for the use of more light in smaller apertures with no increase to aperture brightness. Our three-part architecture enables easy upgrade of technology, beam angles and color temperatures to create the impact desired in the space over the life of the building. This modular design enables convenient servicing and upgrading of technology, beam angles and color temperatures to create the impact desired over the life of the installation.

	Downlights							Wall Wash			Adjustable Accent			
	3"		4"		6"			3"	4"	6"	3"			
	● ■		● ■		● ■	● ■	■	● ■	● ■	● ■	● ■	● ■	● ■	● ■
Lumens	W	N	M	W	N	M	W	LW	LW	LW	13°	17°	21°	29°
500	● ■		● ■	● ■				● ■	● ■		● ■	● ■	● ■	● ■
1000	● ■	● ■	● ■	● ■	● ■	● ■	● ■	● ■	● ■	● ■	● ■	● ■	● ■	● ■
1500	● ■	● ■	● ■	● ■	● ■	● ■	● ■		● ■	● ■	● ■	● ■	● ■	● ■
2000		● ■	● ■	● ■	● ■	● ■	● ■		● ■	● ■				
2500		● ■	● ■	● ■	● ■	● ■	● ■		● ■	● ■				
3000					● ■	● ■	● ■			● ■				
3500					● ■	● ■	● ■			● ■				

N = Narrow M = Medium W = Wide LW = Lensed Wall Wash ● = Round aperture ■ = Square aperture





# AccuRender LED Technology (CRI 90+)

The right light brings colors to life. Our new AccuRender technology helps ensure colors are rendered more accurately and consistently, while doing so as efficiently as CRI 80 products.



## Standard 80 CRI

Good color rendering  
and high efficacy



## AccuRender

Best color rendering, color  
preference and high efficacy



## Standard 90 CRI

Better color rendering  
and low efficacy



### Enjoy design flexibility

#### Full range of products/options:

- Available soon across Lightolier portfolio for application flexibility
- Multiple color temperatures (CCTs) and lumen packages are offered



### Promote savings

#### High efficacy, with no penalty:

- Energy efficacy compares well to conventional 80 CRI
- Up to 25% more energy savings vs competitor 90 CRI<sup>1</sup>
- Helps meet Title 24 requirements



### Show your true colors

#### High color rendering:

- True to life colors to help energize environments and render better flesh tones critical for healthcare hospitality and retail applications.
- $R_a$  up to 94 CRI    •  $R_i$  up to 92 TM-30
- $R_g$  up to 67 CRI    •  $R_{f,h1}$  up to 91 TM-30
- $G_u$  up to 99 CRI    •  $R_g$  up to 100 TM-30
- $C_g$  up to 94 CRI    •  $R_{cs,h1}$  up to -5% TM-30



### Achieve color balance

#### Best in class color consistency:

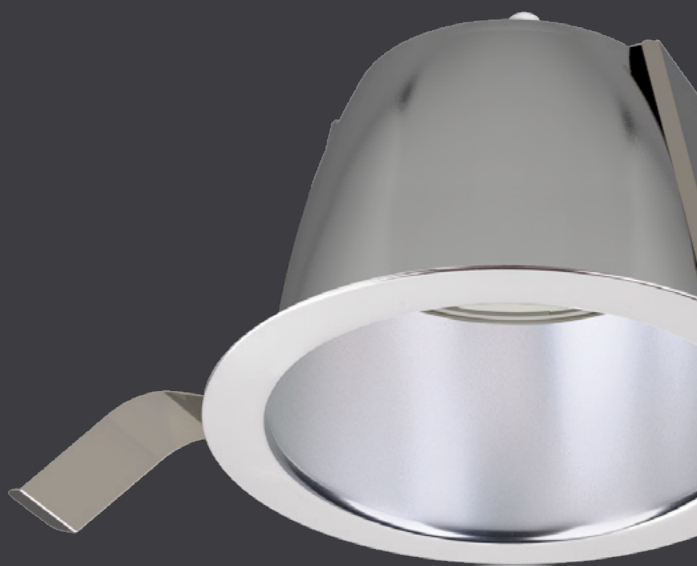
- Promote aesthetic harmony in your space with  $\leq 2$  SDCM

# LyteProfile

## Configuration overview



## LED upgrade with ease



LyteProfile's adaptable design makes it a versatile lighting option. Now available with AccuRender 90+ CRI technology for the highest color quality at the highest efficacy.

This shallow luminaire height saves plenum space without compromising the 70° physical and reflected cutoff which results in no glare and a comfortable lighting experience for end-users. Luminaire design offers efficacy of up to 100lm/w.

### Benefits

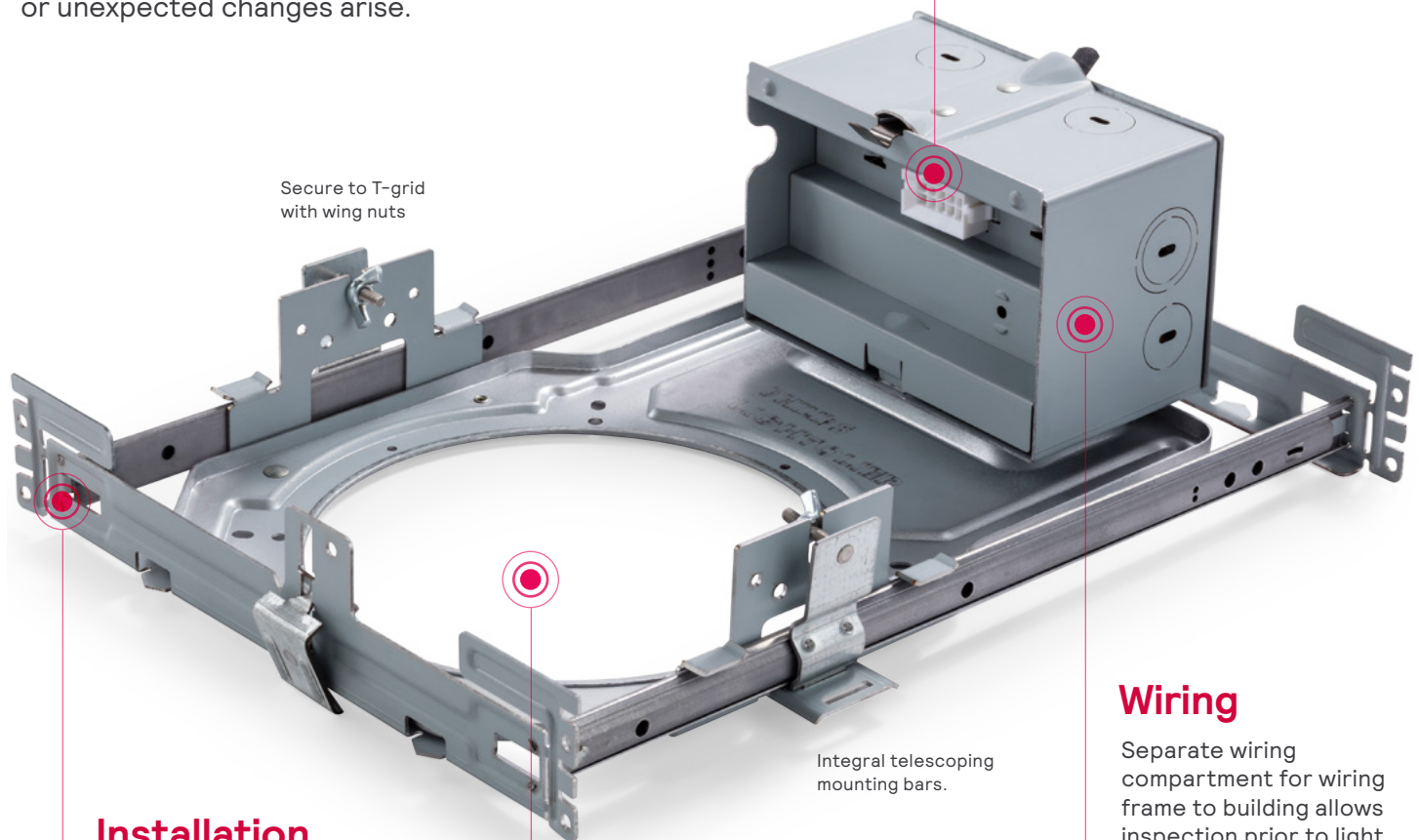
- Housings include 90° swivel mounting bar points and offset holes for applications close to joints for easy installation.
- Shallow 3.5" luminaire height saves plenum space making it ideal in residential and light commercial installations.
- An interchangeable and upgradeable modular light engine provides easy install that is ideal for renovation spaces.
- Low cost solution for slope ceiling and wall wash applications.
- Great for bathrooms and shower installations without the need for special lens design.

# Quick-install frames

UniFrame is a universal frame free from drivers and thermal protectors allowing it to accommodate any lumen package, driver type, input voltage, CCT and distribution. This provides installation ease and flexibility in forecasting as project needs evolve or unexpected changes arise.

## Connector

Easy install blind mate connector ensures a secure connection to the driver. The plug-and-play receptacle accommodates technology upgrade light engines and replacements for the life of the building.



Secure to T-grid with wing nuts

Integral telescoping mounting bars.

## Installation

Tool-less installation into hat channel ceilings in less than 60 seconds.

## Aperture

Close-cut hemmed edge aperture design eliminates an undesired gap between ceiling material and reflector.

## Wiring

Separate wiring compartment for wiring frame to building allows inspection prior to light engine installation.



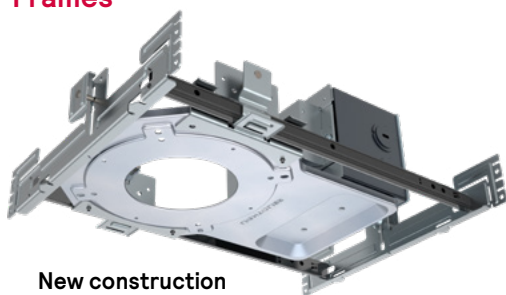


# LyteProfile

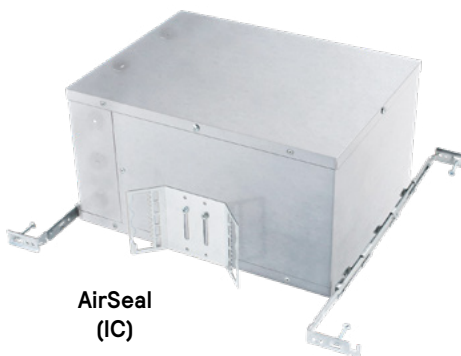
## Configuration overview



### Frames



**New construction  
(Non-IC)**



**AirSeal  
(IC)**

#### Additional options include

- Remodeler (Non-IC)
- Universal 120/277/347V
- Emergency, 6W Self-Test/Self-Diagnostic<sup>1</sup> (347V or BAC or PoE not compatible)
- Integral Interact Pro RF sensor (120/277/347V)<sup>2</sup>
- Chicago Plenum<sup>3</sup>
- Buy American Act of 1933 (BAA)\*

### Dimming



#### Options include

- **Advance 0-10v 1% (Z10):** logarithmic curve is standard. Specify D20 for factory-set dim-to-off function (Z10D20), consult factory for linear dimming curve.
- **Electronic low voltage (E):** forward or reverse phase dimming (120V)
- **Lutron LTE (LTE):** Hi-Lume 2-wire phase cut 1% (120V)
- **Power over Ethernet (P):** Powered via Philips PoE lighting controller: complies with FCC rules per Title 47 part 15 (Class A) for EMI / RFI (conducted & radiated). PoE lighting controller accessible from below ceiling (48V DC).

### Accessories

<b>SBA</b>	Interact Ready System Bridge Accessory with integral occupancy and daylight sensor (compatible with all 0-10V options, see SBA spec sheet)
<b>CAEM6</b>	Field installable Bodine BSL6 6W battery pack with self-test/self-diagnostic for use with new construction frames, 120-277V
<b>CA4RFT / CA6RFT</b>	Mud-in ring for use in 4" or 6" round flangeless trim installations (ordered with a flangeless (F) light engine)
<b>CAEM6TSCP</b>	Remote switch cover plate. Order with EM6 frame for remote mounted test switch.
<b>C4RVPWH</b>	IP65 rated vandal proof matte white accessory mounts onto flangeless light engines (F) and non-IC (N) frame only
<b>T347-75VA</b>	347:120V step-down transformer for non-IC (N) frame only (see spec sheets for details)
<b>7920 / 7925</b>	4" or 6" sloped ceiling adapter (refer to SCA spec sheet for slope options)
<b>AMS</b>	ActiLume multi-sensor (optional accessory for PoE configurations)

1. Emergency (EM6) frame is compatible with reflector mounted test switch when light engine is ordered with IEM6 option code.
2. Requires above ceiling access. Not available with A, LC, and EM6 frames.
3. Chicago Plenum (LC) is not available for Buy American Compliant (BAC) configs.
4. Requires IRT9015 IR remote and Interact Pro App for commissioning.

\* Failure to properly select the "BAC" suffix could result in you receiving product that is not BAA compliant product with no recourse for an RMA or refund. This BAC designation hereunder does not address (i) the applicability of, or availability of a waiver under, the Trade Agreements Act, or (ii) the "Buy America" domestic content requirements imposed on states, localities, and other non-federal entities as a condition of receiving funds administered by the Department of Transportation or other federal agencies.

# LyteProfile

## Introducing more of a good thing

### Shapes



Round



Square

### Styles



**Downlight**

All shown with Clear  
Diffuse reflector  
and Polished flange



**Lensed Wall Wash**

All shown with Clear  
Diffuse reflector  
and Polished flange



**Adjustable Accent**

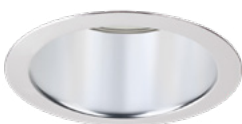
All shown with Clear  
Diffuse reflector  
and Polished flange

### Finishes



**Specular clear (CL)**

Most specular and efficient  
finish, delivers maximum  
photometric performance.  
Can produce a mirror image  
effect of interior space.



**Comfort clear (CC)**

Semi-specular finish,  
softens light at the source  
in reflector while creating  
a subtle, even luminance  
from the reflector cone.



**Comfort clear diffuse (CD)**

Slightly diffuse clear finish,  
reduces the mirror image  
effect inherent with specular  
finishes and eliminates  
iridescence.



**White**

Brightest illuminated  
aperture, provides the  
smoothest transition to  
most ceilings when off.  
(only offered with a white flange).



**Black**

Specular finish, provides  
lowest aperture brightness  
possible and reduces source  
identification in ceiling  
significantly (only offered  
with a black flange).

### Flanges



**Aluminum (A)**

Appearance matches  
inner anodized surface.



**Flangeless (F)**

Seamless transition  
from aperture to ceiling.



**White (-)**

Smoothest transition  
to ceilings when off.



**Black (BK)**

Lowest aperture  
brightness possible.



© 2023 Signify Holding. All rights reserved. The information provided herein is subject to change, without notice. Signify does not give any representation or warranty as to the accuracy or completeness of the information included herein and shall not be liable for any action in reliance thereon. The information presented in this document is not intended as any commercial offer and does not form part of any quotation or contract, unless otherwise agreed by Signify.

Signify North America Corporation  
400 Crossing Blvd, Suite 600  
Bridgewater, NJ 08807  
Telephone: 855-486-2216

Signify Canada Ltd.  
281 Hillmount Road,  
Markham, ON, Canada L6C 2S3  
Telephone: 800-668-9008

All trademarks are owned by Signify Holding or their respective owners.