



COLOR KINETICS

Concealed Interior

PureStyle & PureStyle Compact,
EvenBalance, Cove, and Fuse

Conceal the light, reveal the beauty

Product Guide

Concealed Inte



erior

Create stunningly beautiful interiors with our full portfolio of breakthrough concealed lighting solutions.



In this guide:

Introducing Concealed Interior	02
What makes Concealed Interior different?	06
Beyond the cove	08
Color Kinetics technologies	09
Concealed Interior portfolio	10
Meet PureStyle & PureStyle Compact family	12
PureStyle key features	14
PureStyle Compact key features	16
EvenBalance key features	18
Cove key features	20
Fuse key features	22
Complete solution	24
Showcase	26
PureStyle specifications	34
PureStyle Compact specifications	36
EvenBalance specifications	38
Cove specifications	40
Fuse specifications	44

Excitement, engagement, and artistry

Today's visionary lighting designers, architects, and building owners are using innovative concealed lighting to transform interiors into art with exceptionally beautiful lighting installations.

They're creating some of the world's most alluring, intriguing projects—awe-inspiring casinos, elegant hotel lobbies, breathtaking restaurants, and much more. They're re-envisioning how these spaces can be used, enjoyed, and maximized. And they're inspiring powerful experiences and emotional responses—the kind that draw people in and bring them back, over and over. All with our extensive portfolio of innovative LED lighting solutions.

We've been designing LED concealed lighting for more than a decade, giving us a unique perspective on how to get it right, delivering exceptional quality light,

remarkable consistency and control, and unbeatable reliability. Our portfolio includes our flagship offerings—PureStyle IntelliHue Powercore and EvenBalance eW Powercore—as well as our proven Cove and Fuse families.

Our innovative solutions are ideally suited for a wide range of applications—from tunable white task lighting and general illumination to stunning dynamic color installations. And these solutions give lighting professionals new tools (and inspiration) to create one-of-a-kind interiors—and achieve their creative vision.



Photography: © Gilles Framinet

At the center of innovative installations around the world.

What makes our Concealed Interior solutions so different?

Exceptional Performance

Our concealed luminaires deliver precisely controlled bright light output that matches the specific requirements of any interior space. So you can be confident that our right-sized solutions will deliver the levels of performance and efficacy that you need—including high-lumen output.

White and Color Light Solutions

Some interior spaces, such as traditional offices, need great white light that creates a high-productivity environment. For these installations, our range of Essential White (eW) solutions lets you choose the performance, uniformity, run length, and control you need. For the ultimate in uniformity, our EvenBalance Essential White Powercore luminaire integrates OptiField, our proprietary optical technology that outputs remarkably consistent light for grazing and wall washing. And our premium PureStyle IntelliHue Powercore luminaires deliver intelligent white and color light in one interior linear luminaire—with a larger color gamut and exceptional color consistency.

Choice of Form Factors

Interior spaces vary widely in shape, structural details, and size. That's why our lighting portfolio includes different form factors, and run lengths, enabling you to choose the luminaire that's best for your project.

Optimizing Technologies

Our luminaires integrate proprietary technologies (see page 25) that work together to take quality and performance to the highest levels. For example, all of our concealed lighting solutions use our proprietary Optibin technology to select the best and brightest LEDs right from the start. Our OptiField technology optimizes uniformity with a breakthrough beam shape. IntelliHue delivers dynamic color and exceptional white light in the same luminaire—with high flux and exceptional color mixing. And our Chromasync technology ensures consistency by calibrating the color and optimizing the lumen output of each luminaire.



Photography: Joseph Huang

Short Setbacks

Our breakthrough PureStyle luminaires have remarkably short setback distances with colors mixed perfectly and without hot spots or banding.

Application Flexibility

Our portfolio of interior LED lighting solutions includes luminaires for concealed lighting, grazing, and/or wall washing. Flexibility starts with the beam angle. We offer narrow (for grazing), medium, and wide beams (for wall washing). Choose a luminaire dedicated to one application—or one that can do it all.

Smart Power

Our proven, popular Powercore technology rapidly, efficiently, and accurately controls power directly from line voltage, eliminating the need for an external power supply. Contractor-friendly installation dramatically simplifies installation and lowers total system cost.

Proven Reliability

Thanks to smart design, ruthless testing, and years of experience, our lighting solutions deliver unbeatable reliability, an important concern for lighting in inaccessible locations.

Complete Solution

An advanced, reliable luminaire is a critical part of your lighting solution, but it's not the only element that matters. That's why we offer a full range of complementary solutions—including dimmers, controllers, power/data supplies, remote monitoring, and much more. All designed and optimized to ensure seamless integration and years of trouble-free operation.

Lighting beyond the cove

Lighting professionals think of light in layers—ambient, task, focal, and decorative—that illuminate a space. Traditional concealed lighting is a critical part of the ambient layer, which sets a mood and gives an interior a unique look. Since the luminaire stays hidden, the lighting can be intriguing, even mysterious.

Great concealed lighting needs to fit seamlessly into the interior environment, while keeping the source of the light invisible. The light needs to be bright and smooth, consistent but flexible. But that's just the beginning.

Our customers around the world are using our advanced luminaires to create phenomenally beautiful, state-of-the-art interiors—the kind that get attention, attract crowds, and win awards.

To these visionaries, we offer an unequaled portfolio of lighting solutions, including advanced luminaires with remarkably short setbacks, breakthrough optics, extremely consistent output, and other compelling capabilities.

We're committed to helping our customers get exceptional results—project after project, from traditional to unconventional, and year after year.

Our advanced technologies raise the bar

Color Kinetics is setting new standards for consistency and accuracy by developing advanced technologies that are integrated into our luminaires. These technologies work together to deliver ever-escalating levels of quality, performance, and accuracy required for your most innovative and ambitious projects.

Photography: © Andrés Otero

Optibin

Our LED optimization technology begins the color consistency process by grouping (or binning) LEDs by flux as well as center wavelength. This proprietary binning optimization process uses an advanced bin selection formula that exceeds industry standards for chromaticity. The result? Higher uniformity and consistency of hue and color temperature for all our luminaires. Integrated into all PureStyle and PureStyle Compact, Cove, EvenBalance, and Fuse luminaires.

IntelliHue

Our advanced approach to color mixing produces high-quality white light, subtle pastels, and fully saturated colors in the same precisely controllable luminaire. All with unrivaled color accuracy across the entire range of color temperatures. Available on PureStyle and PureStyle Compact IntelliHue luminaires.

Chromasync

Our advanced output optimization technology controls and boosts output while ensuring color consistency. When enabled, Chromasync ensures excellent color consistency between luminaires, without manually adjusting color points on each luminaire. And it ensures the same lumen output across all color temperatures. Integrated into all PureStyle and PureStyle Compact luminaires.

Powercore

Our patented approach to power output proves that simple is better. As well as faster, more efficient, and accurate. Powercore controls power output to luminaires directly from line voltage. It merges line voltage with control data and delivers both over a single standard cable—dramatically simplifying installation and lowering total system cost. Integrated into all PureStyle and PureStyle Compact, Cove, EvenBalance, and Fuse luminaires.

OptiField

Our proprietary optical technology rethinks beam shape to deliver beautiful light with remarkable evenness. With OptiField, our luminaires achieve unparalleled uniformity and eliminate hotspots and banding. The result of a decade of research and development, OptiField's freeform optic creates a breakthrough rectangular beam that covers large surfaces with full, bright, even light. And OptiField can cover more surface area with fewer luminaires—simplifying installation while lowering energy use. Available on EvenBalance OptiField luminaires.

Learn more about our innovative technologies >

Find the luminaire that's right for your project

When you look at our Concealed Interior LED lighting portfolio, the first thing you notice is the wide array of options available to you—from traditional white to tunable white, three-channel color to precisely controlled IntelliHue luminaires.

With Concealed Interior, the choice is yours

PureStyle and PureStyle Compact

High-quality white light and fully saturated colors in one compact luminaire.

EvenBalance

Featuring OptiField technology, EvenBalance provides exceptionally uniform white light for washing and grazing applications

Cove

High-performance LED luminaires in a wide variety of options, perfect for accent and aesthetic effect lighting.

The Cove family is available in two versions:

Cove MX Powercore has exceptional flexibility when filling indoor alcove and accent spaces with vibrant light.

Cove QLX Powercore provides generous light output at performance power consumption levels.

Fuse

Excellent choice for a full range of surface grazing, wall-washing, and accent lighting.

	Product Families					
	PureStyle	PureStyle Compact	EvenBalance	Cove		Fuse
				MX	QLX	
Light Output Options						
IntelliHue High-quality tunable white and saturated colors	●	●				
RGBA Expanded range of warmer tones	●	●				
eW (Essential White)			●	●	●	●
eColor (Essential Color)				●		●
Beam Angles						
Narrow Beam	●					●
Medium Beam	●	●		●	●	●
Wide Beam	●	●		●	●	
OptiField			●			
Lengths						
154 mm (6 in)					●	
305 mm (1 ft)	●	●	●	●	●	●
1219 mm (4 ft)	●	●	●	●	●	●

Meet the PureStyle & PureStyle Compact family

PureStyle & PureStyle Compact

PureStyle, our premier family of LED lighting solutions for concealed lighting, now includes both PureStyle and PureStyle Compact.

Innovative **PureStyle Powercore** luminaires bring lighting professionals high output in a compact, easily concealed luminaire. PureStyle delivers exceptionally high-quality light for a wide range of interior applications from cove to wall-washing to backlighting and beyond.

PureStyle Compact is a slender interior linear luminaire ideal for soft glow, backlighting, and low intensity wall washing. The elegant new form factor is the perfect complement to PureStyle, giving the same high efficacy and CRI, but is designed for jobs that don't require high intensity washing where space is at a premium. PureStyle Compact is designed for tight niches where color mixing directly out of the luminaire is important.

Here are just some of the powerful advantages:

Unbeatable Performance

Major innovations, including a unique optical cluster, enable PureStyle to deliver up to 96 CRI, and color temperatures that range from 2000 K to 10000 K—all with superior beam quality that delivers bright, smooth light.

Innovative Design

With its compact size and an extremely short mixing distance, PureStyle can excel in areas where traditional linear luminaires are impractical.

Superior Color Consistency

PureStyle IntelliHue Powercore improves color consistency between all LED luminaires in a family with Chromasync technology.

White and Color Light

PureStyle combines high-quality tunable white and dynamic color light in one innovative, high-performance luminaire that's easy to install and control.

High R9 Values

PureStyle delivers R9 values that can reach up to 87.

Higher Efficiency, Lower Cost

All PureStyle luminaires integrate Powercore technology, which controls power output to luminaires directly from line voltage—rapidly, efficiently, and accurately.

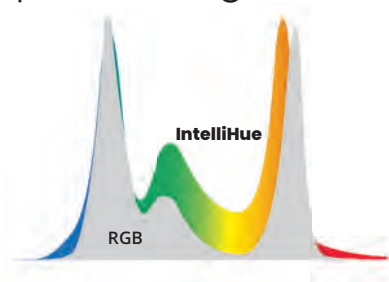
Easy Installation

PureStyle luminaires accept power input of 100 to 277 VAC for consistent installation anywhere in the world.

Versatile Accessory Options

PureStyle Compact works with the same cables and mounting track as PureStyle to simplify installation.

IntelliHue brings high output and high CRI



Our advanced approach to color mixing produces high-quality white light, subtle pastels, and fully saturated colors in the same precisely controllable luminaire. All with unrivaled color accuracy across the entire range of color temperatures.

PureStyle key features



PureStyle IntelliHue Powercore

High-quality white light and fully saturated colors in one luminaire

Innovative PureStyle IntelliHue Powercore luminaires deliver high output in an easily concealed luminaire. PureStyle IntelliHue delivers exceptionally high-quality light for a wide range of interior applications from concealed to wall washing to backlighting and beyond.

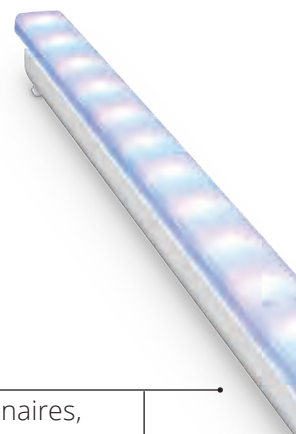
IntelliHue technology produces high-quality tunable white light, as well as millions of saturated colors, pastels, in the same precisely controllable luminaire.



PureStyle iColor Powercore, RGBA

Enhanced reds and golds in an advanced four-channel luminaire

All PureStyle luminaires deliver exceptional color and white light in an advanced luminaire that's easy to install and reliable to use, year after year. They offer significant benefits, from exceptionally bright output to high efficacy. For applications requiring an emphasis on the orange/gold/red area of the color spectrum, we offer PureStyle iColor Powercore, RGBA.



Exceptional light

With PureStyle IntelliHue luminaires, you get a full spectrum of precisely controllable light, including uniform white light, and millions of saturated colors and pastels, all with unrivaled color accuracy across the entire range of color temperatures.

Universal power

PureStyle luminaires accept power input of 100 to 277 VAC for consistent installation anywhere in the world.

Industry-leading controls

PureStyle luminaires work seamlessly with the complete Color Kinetics line of controllers as well as third-party controllers. Can be triggered via DyNet.

Smart connectors

Interlocking connectors ensure end-to-end installation without visible light scalloping between luminaire—just pure, seamless light.

IntelliHue

High-quality white light, subtle pastels, and saturated colors, all with unrivaled color accuracy across the entire range of color temperatures.

RGBA

Expanded color range of warmer tones—gold, yellow, and orange, as compared to RGB.

Take a closer look at PureStyle



90+ CRI

Delivers white and dynamic color light with a CRI >90 at any point from 2700 K to 6500 K.

Enhanced reds

Pure white light—plus natural orange tones and deep reds.

High efficacy

Delivers efficacy of up to 61 lm/W.

Even light

PureStyle produces even light and color with minimal shadow.

Simple installation

Powercore technology allows long runs and eliminates the need for special wiring and external power supplies.

Beam angles

Choose from narrow (10° by 60°), medium (30° x 60°), or wide (100° x 100°).

Available in 2 lengths

305 mm (1 ft)
1219 mm (4 ft)



Accessories

Louver hides the light source and eliminates the need for third-party solutions.

Mounting tracks are available in two sizes, 305 mm (1 ft) or 1219 mm (4 ft).

End-of-run diffuser blocks spill light for better beam control.

PureStyle Compact key features



PureStyle Compact Powercore, IntelliHue

Intelligent white and exceptional color light in one compact luminaire

PureStyle Compact provides high efficacy in a slender, easily concealed luminaire. PureStyle Compact Powercore, IntelliHue delivers exceptionally high-quality light for a wide range of interior applications from low intensity wall washing to backlighting and subtle glow.

IntelliHue technology produces millions of saturated colors, pastels, and high quality white light, in the same precisely controllable luminaire.



PureStyle Compact Powercore, RGBA

Enhanced reds and golds in a compact four-channel luminaire

PureStyle Compact delivers the same exceptional white and color light you've come to expect from the PureStyle family, all in a slender, advanced luminaire that's easy to install and reliable to use, year after year. PureStyle Compact luminaires offer significant benefits, from high efficacy to exceptional light mixing right out of the luminaire.

For applications requiring an emphasis on the orange/gold/red area of the color spectrum, we offer PureStyle Compact Powercore, RGBA.

Compact size

Delivering fully mixed color directly out of the luminaire is the hallmark of the PureStyle Compact family.

Exceptional light

With PureStyle Compact IntelliHue luminaires, you get a full spectrum of precisely controllable light, including uniform white light, and millions of saturated colors and pastels, all with unrivaled color accuracy across the entire range of color temperatures. PureStyle Compact also provides superior color mixing directly out of the luminaire.

Universal power

PureStyle Compact luminaires accept power input of 100 to 277 VAC for consistent installation anywhere in the world.

Industry-leading controls

PureStyle luminaires work seamlessly with the complete Color Kinetics line of controllers as well as third-party controllers. Can be triggered via DyNet.

Smart connectors

Interlocking connectors ensure end-to-end installation without visible light scalloping between luminaire—just pure, seamless light.

IntelliHue ●●●●○

High-quality white light, subtle pastels, and saturated colors, all with unrivaled color accuracy across the entire range of color temperatures.

RGBA ●●●●●

Expanded color range of warmer tones—gold, yellow, and orange, as compared to RGB.

PureStyle Compact delivers the details

90+ CRI

Delivers white and dynamic color light with a CRI >90 at any point from 2700 K to 6500 K.

Enhanced reds

Pure white light—plus natural orange tones and deep reds.

High efficacy

Delivers efficacy of up to 75 lm/W.

Even light

PureStyle Compact produces even light and color with minimal shadow.

Redesigned hinges

Constant torque 90° rotatable hinges are easily reversible allowing 180° of rotation, simple and consistent position control, and mounting flexibility.

Simple installation

Powercore technology allows long runs and eliminates the need for special wiring and external power supplies.

Beam angles

Comes with a native wide beam 100° x 100°. Glare-reducing lens is available separately to narrow the native beam down to 60° x 90°.

Available in 2 lengths

305 mm (1 ft)
1219 mm (4 ft)

Accessory

The PureStyle Compact luminaire's innovative masking plate hides the light source effectively, and the masking plate can be coupled with a bridge, allowing it to be installed in line or even around corners without spill light.

EvenBalance key features



EvenBalance Essential White Powercore

Exceptionally uniform light for washing applications

EvenBalance Essential White (eW) Powercore provides industry-leading illuminance uniformity in an advanced, compact interior linear luminaire. This premier white-light luminaire includes our breakthrough OptiField optical technology, which uses an advanced, freeform optic to create exceptionally uniform light. EvenBalance Essential White Powercore delivers an impressive uniformity ratio of less than 3:1 on a 3 m (9 ft) wall with an 0.5 m (1.5 ft) setback.

While uniformity is the core benefit of EvenBalance, it also brings you other key benefits.

Right for Washing—The washing beam spread is designed to evenly illuminate flat surfaces, such as drywall, with a high illuminance, using a 150 mm to 500 mm (0.5 to 1.5 ft) setback.

And the grazing beam spread is designed to evenly accentuate textured surfaces using a 50 mm (2 in) setback.

OptiField technology boosts uniformity



Flexibility

EvenBalance provides 180 degree continuous and consistent torque rotation, creating a high degree of flexibility and adaptability in any application.

Support for multiple voltages

Accepts line voltage of 100 to 277 VAC for consistent installation and operation around the world.

Simple installations

The linear design and small form factor of EvenBalance makes it easy to install.

Dimming capability

Patented DIMand technology offers smooth dimming capability with selected commercially available reverse-phase ELV-type dimmers.

eW (Essential White) ☐

White light in one of four color temperatures—2700 K, 3000 K, 3500 K, or 4000 K.

EvenBalance means uniformity



OptiField technology

Our innovative optic technology delivers light precisely where it is needed, ensuring maximum uniformity.

Higher efficacy and delivered lumens

The advanced optical system allows for precise control of light from the source, resulting in higher efficacy and higher delivered lumens.

Choose your beam

EvenBalance offers beam angles appropriate for different applications, so you get the beam angle you need

Grazing—Evenly accentuate the surface of a textured wall at 50 mm (2 in) setback.

Washing—Evenly illuminate flat surfaces, using a 150 to 500 mm (6 to 18 in) setback.

Available in 2 lengths

305 mm (1 ft)

1219 mm (4 ft)



Precise control

Asymmetric optic design provides precise control of light and delivers more illumination with higher uniformity at a lower power than comparable fluorescent asymmetric reflector solutions.



Accessories

Mounting tracks support vertical and overhead positioning. Available in two sizes, 305 mm (1 ft) or 1219 mm (4 ft).

Cove key features



eW Cove MX Powercore and eColor Cove MX Powercore

High light output luminaire with solid white or color light

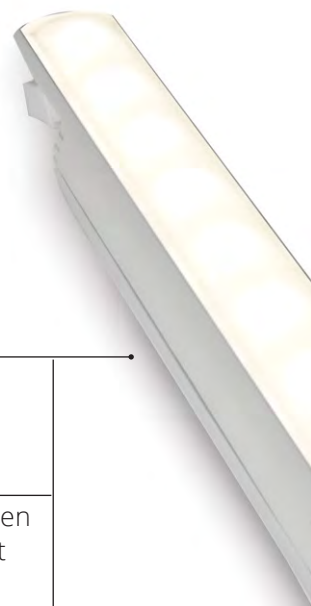
Cove MX Powercore delivers the highest light output in solid white or color. Cove MX Powercore can be used for accent lighting and indirect general illumination, as well as the full range of wall and ceiling cove applications. Cove MX Powercore meets or exceeds the performance of comparable linear fluorescent strip cove lights while lowering installation, energy, and maintenance costs. Cove MX Powercore offers environmentally conscious buyers a green, energy-efficient lighting solution without sacrificing quality or quantity of light.



eW Cove QLX Powercore

High light output luminaire with solid white light

eW Cove QLX Powercore is a high-quality, elegant, low-profile luminaire that delivers up to 432 lumens per foot of white light at an affordable price. eW Cove QLX Powercore is designed to replace traditional cove lighting sources for wall and ceiling glow effects, wall washing, and indirect lighting from a single cove. Multiple color temperatures, beam angles, power levels, and lengths afford an abundance of design options.



Cove MX Powercore

Available in Essential White and Essential Color luminaires.

Exceptional flexibility

Offers exceptional flexibility when filling indoor alcoves and accent spaces with vibrant color.

Beam options

50° x 70°
125° x 120°

Available in 2 lengths

305 mm (1 ft)
1219 mm (4 ft)

eW (Essential White) □

White light in one of five color temperatures—2200 K, 2700 K, 3000 K, 3500 K, or 4000 K. (eW Cove MX)

White light in one of 4 color temperatures—2700 K, 3000 K, 3500 K, or 4000 K. (eW Cove QLX)

eColor (Essential Color) ■■■■

Intensely saturated red, green, blue, or amber light for accent and other special applications.

Cove: a proven success



eW Cove QLX Powercore

Available in Essential White luminaires.

Energy-efficient

Provides generous light output at approximately 38% less energy than Cove MX Powercore.

Beam options

60° x 90° medium
110° x 110° wide

Available in 3 lengths

153 mm (6 in)
305 mm (1 ft)
1219 mm (4 ft)

Cove family

Ideal for accent and aesthetic effect lighting in brightly lit environments—including retail stores, nightclubs, lobbies, atriums, and other locations.

Easy adjustment

Luminaires rotate 180 degrees, allowing easy adjustment. Once positioned the luminaire can be locked in place.

Rugged connectors

End-to-end locking power connectors can turn a full 180°.



Accessory

Mounting tracks support vertical and overhead positioning. Available in two sizes, 305 mm (1 ft) or 1219 mm (4 ft).

Fuse key features



eW Fuse Powercore, eColor Fuse Powercore

Ultra-compact luminaire with solid white or color light

Fuse Powercore is an excellent choice for a full range of surface grazing and wall-washing applications. Its ultra-compact form factor permits installation in tight spaces too small to accommodate conventional grazing luminaires with similar light output. Fuse Powercore meets or exceeds the performance of comparable linear fluorescent grazing luminaires while lowering installation, energy, and maintenance costs. Luminaires offer environmentally conscious buyers a green, energy-efficient grazing luminaire with industry-leading quality and quantity of light.



Ultra-compact form

Permits installation in tight spaces too small to accommodate conventional grazing luminaires that offer similar level and distribution of light.

Rugged housing

Premium die-cast aluminium.

Flexibility

With end-to-end locking power connectors that can make 180 turns, these compact grazing luminaires are easy to position in even the most challenging mounting circumstances.

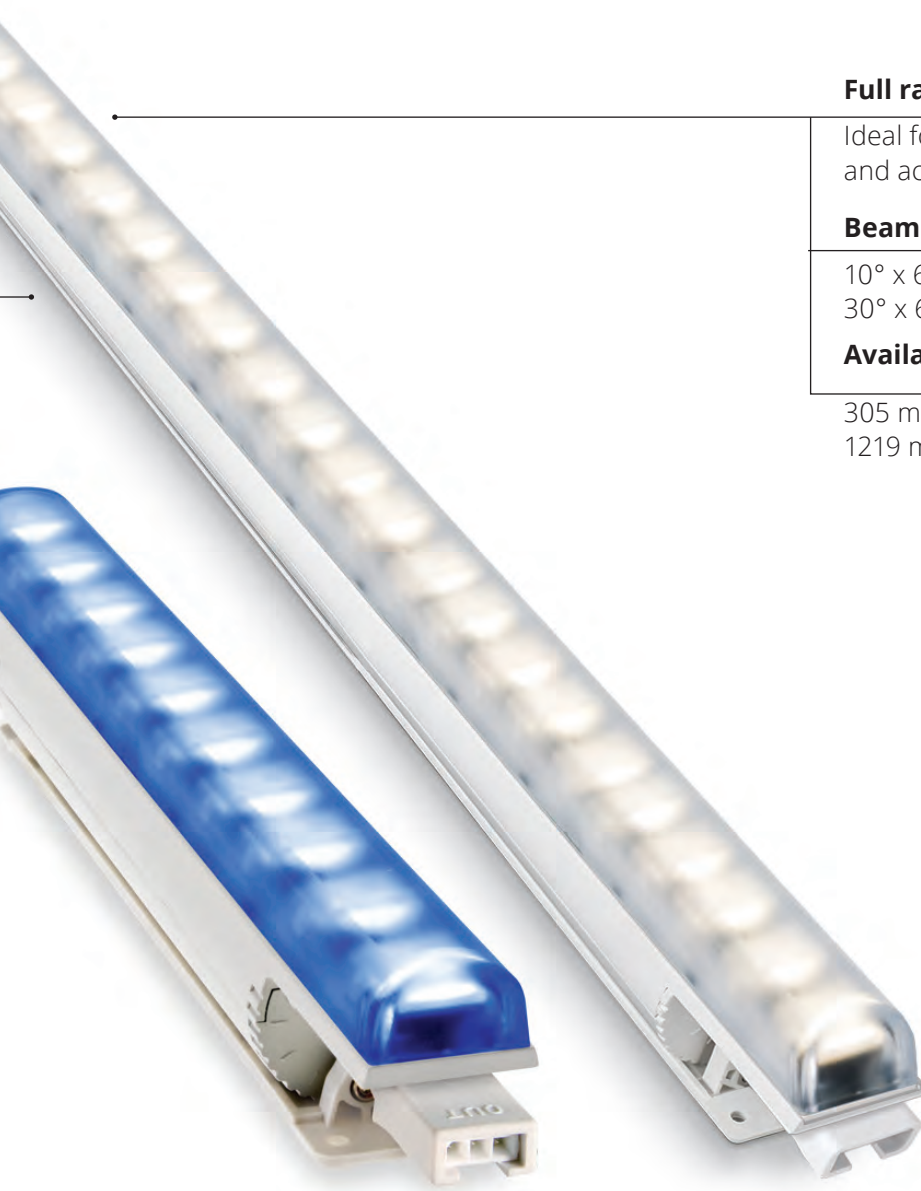
eW (Essential White) ☐

White light in one of 4 color temperatures—2700 K, 3000 K, 3500 K, or 4000 K.

eColor (Essential Color) ☐ ☐ ☐ ☐

Intensely saturated red, green, blue, or amber light for accent and other special applications.

Fuse fits tight spaces



Full range of applications

Ideal for surface grazing, wall washing, and accent lighting.

Beam options

10° x 60° narrow
30° x 60° medium

Available in 2 lengths

305 mm (1 ft)
1219 mm (4 ft)

Accessory

Mounting tracks support vertical and overhead positioning. Available in two sizes, 305 mm (1 ft) or 1219 mm (4 ft).

Exceptional lighting takes more than a luminaire

To unlock the full potential of your Concealed Interior luminaires, you need the right components to power and control them.

Controllers

Our broad line of controllers brings you differing capabilities that match your specific needs, the complexity of your project, and your budget. Our controllers offer the industry-standard DMX protocol, or our proprietary, scalable KiNET protocol for Ethernet networks. Because of addressing limitations, DMX is appropriate for relatively simple installations, or for light shows in which multiple Concealed Interior luminaires operate in unison.

Because it is not subject to DMX addressing limitations, Ethernet is the preferred environment for intricate color-changing light shows using Concealed Interior luminaires.

All Concealed Interior solutions work seamlessly with our full range of controllers, including Light System Manager, Video System Manager Pro, iPlayer 3, Antumbra iColor Keypad, and ColorDial Pro, as well as third-party DMX controllers.



Power/Data Supplies

We pair each Concealed Interior luminaire with the right power/data supply, delivering the power and data needed for your project, ensuring exceptional operation, and maximizing run lengths.

Monitoring and Management

Interact Landmark (formerly Philips ActiveSite) is the first-ever cloud-hosted connected lighting system for architectural LED lighting installations. Interact Landmark allows you to remotely monitor, manage, and maintain an installation site from anywhere in the world, using a secure web connection.

Concealed Interior showcase

Updating an architectural icon



Photography: Signify Belgium

Opened in 1849, Galeries Royales Saint-Hubert is one of the world's first and most opulent shopping arcades—and an important landmark in the city.

Updating and enhancing the building required lighting that respected the historical character of the architecture while delivering new innovations. PureStyle IntelliHue Powercore luminaires, concealed in the glass roof, provide a warm white tone, while also enabling exciting dynamic color light shows that delight visitors. And PureStyle iColor Powercore, RGBA luminaires bathe the details of the vaulted archways with even, saturated color illumination.

Luminaire

PureStyle IntelliHue Powercore and PureStyle iColor Powercore, RGBA

Bringing flexible illumination to a major shopping center



Photography: Signify

The Posnania shopping center in western Poland is the country's third largest shopping center and a major regional attraction.

A comprehensive Color Kinetics lighting solution helped revitalize the center—attracting new visitors with eye-catching interior and exterior lighting while ensuring sustainability. PureStyle IntelliHue Powercore luminaires maximize flexibility for this multi-functional facility by providing the highest quality white light and an almost infinite range of subtle colors. PureStyle empowers shopping center personnel to use light to create a wide range of memorable experiences for visitors.

Luminaire

PureStyle IntelliHue Powercore

Turning an innovative restaurant into a picnic spot



Photography: Signify

A fully immersive dining experience brings more than just gourmet dishes to the table.

Singapore gets serious when it comes to gastronomical experiences. Combine that with an award-winning Singaporean restaurateur and you get Picnic, an out-of-this-world dining concept new in the scene. Taking diners and Instagrammers by storm, delivering the best in great taste in its tastefully done up interiors. PureStyle, a high-performance luminaire was the perfect choice for illuminating Picnic's alcoves and accent spaces. Its innovative, aesthetically pleasing form factor fit seamlessly within the application areas. Color Kinetic ColorBurst Powercore LED Spots were also used as accent lights along the food street, cast artistically on the colorful food trucks.

Luminaire

PureStyle iColor Powercore, RGBA, ColorBurst Powercore gen2, RGB, and iColor Flex MX gen2

Enlivening an entertainment center with vibrant lighting



Photography: Petar Cholakov with all usage rights

Colorful lighting creates a unique and interesting atmosphere.

Joy Station, a new generation multi-functional entertainment center, opened in October 2013 to provide fun, activity, relaxation, and a cool atmosphere for the people of Sofia, Bulgaria. The first floor stages local and international music acts every week, and the second floor is home to a 20-lane bowling alley. The club also offers darts, billiards, video games, simulators, table soccer, a restaurant, and bars. iColor Fuse Powercore, iColor Flex MX gen2, iColor Flex LMX gen2, ColorBlast Powercore, ColorGraze MX Powercore, and ColorBurst Compact Powercore luminaires were installed throughout the club. Altogether, nearly 10,000 LED light points bathe the entire club in saturated, full-color and white light. The color-changing capabilities transformed Joy Station into a canvas of possibility. The LED lighting system was also chosen for its durability and remarkable energy savings.

Luminaire

PureStyle Intelligent Color Powercore, RGBA, iColor Flex MX gen2, iColor Flex LMX gen2, ColorBlast Powercore gen4, RGB, ColorGraze MX Powercore, ColorBurst Compact Powercore, and Light System Manager gen5

Setting the mood at an updated diner



Photography: Signify

The Diner—created for Salone del Mobile, the famed Milan furniture fair—invents the American diner as a more contemporary restaurant, while still retaining classic details.

Lighting sets the right mood, whether guests are relaxing or partying in this multi-function space. PureStyle IntelliHue Powercore luminaires provide subtle color variations that lend a more sophisticated feel to the space. And they provide the flexibility necessary to adjust the space to match its current function, transitioning from a relaxed restaurant to a nightclub atmosphere.

Luminaire

PureStyle IntelliHue Powercore

Bringing exceptional light to a hard-to- access atrium



Photography: Darius Kuzmickas

World Market Center uses approximately 16,000 feet of Cove luminaires to transform an atrium into a multi-layered visual experience.

More than 8,000 linear feet of eW Cove Powercore white-light LED luminaires, installed in the atrium ceiling and other locations, blend seamlessly with conventional fluorescent cove luminaires. Because of their long life, eW Cove Powercore luminaires dramatically reduce the cost of servicing light sources installed in difficult-to-access locations 80 feet above the main floor.

Specifications and Information

Measurements for 305 mm (1 ft) luminaire shown. Additional measurements can be found on the PureStyle product pages.

Products	Lengths	Power consumption	Lumens per foot	Efficacy lm/W	CRI	CRI R9
PureStyle IntelliHue Powercore	305 mm (12 in) 1219 mm (48 in)	13 W 52 W	696 to 764 (2700 K) 640 to 707 (4000 K)	55 to 61	93 (2700 K) 91 to 94 (4000 K)	76 to 84 (2700 K) 58 to 70 (4000 K)
PureStyle Intelligent Color Powercore, RGBA	305 mm (12 in) 1219 mm (48 in)	13 W 52 W	481 to 549	39 to 42	–	–

General information

Beam Angles	10° x 60°, 30° x 60°, 100° x 100°
LED Channels	IntelliHue—Red/Green/Blue/Mint White RGBA—Red/Green/Blue/Amber
Input Voltage	100 to 277, auto-ranging, 50/60 Hz
Housing Material	Extruded anodized aluminium, white powder-coated finish
Lens	Polycarbonate
Approbations	UL/cUL, FCC Class B, CE, PSE, CQC, RCM
Environment	Dry/Damp Location, IP20
Weight	305 mm (12 in)—0.5 kg (1.1 lb) 1219 mm (48 in)—1.8 kg (4.2 lb)
Dimensions	10° x 60° & 30° x 60° 305 mm (12 in)—58.5 x 298.7 x 40 mm (2.3 x 11.75 x 1.57 in) 1219 mm (48 in)—58.5 x 1213.7 x 40 mm (2.3 x 47.78 x 1.57 in) 100° x 100° 305 mm (12 in)—50 x 298.8 x 40 mm (1.97 x 11.75 x 1.57 in) 1219 mm (48 in)—50 x 1212.5 x 40 mm (1.97 x 47.75 x 1.57 in)

For further information

PureStyle is available in two different light options, and one housing color. It can be fitted with an array of accessories specifically designed for the luminaire family. Complete details of every family, including Installation Instructions, Specification Sheets, .ies files, and product drawings, can be found on the product page. Additionally, we can engineer unique solutions to exactly fit your specific lighting project needs.



PureStyle IntelliHue Powercore



PureStyle Intelligent Color Powercore, RGBA

Accessories

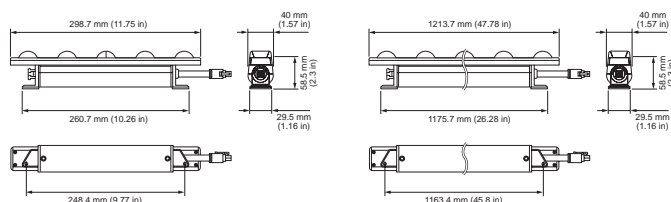
Accessory options let you customize PureStyle.



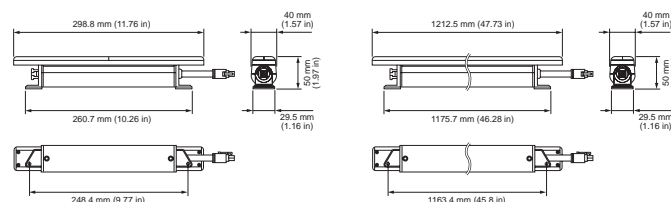
Louver, mounting track, masking plates, and end-of-run diffusers

Dimensions and Configurations

10° x 60° & 30° x 60°



100° x 100°



Configuration and planning

Regardless of the size and complexity of your installation, the planning time you spend up front can help streamline the installation and configuration of your luminaires. Keep these points in mind as you plan your installation:

Configuration Calculator

Create a lighting design plan that identifies and locates all luminaires, Data Enabler Pro devices, and controllers. Use **Configuration Calculator** to determine how many luminaires you can install in a single run, and the maximum distances between Data Enabler Pro devices, luminaires, and controllers.

QuickPlay Pro

PureStyle luminaires operate in 8-bit mode by default. To address luminaires, including switching between 8-bit mode and 16-bit mode download **QuickPlay Pro**.

Additional Considerations

Determine whether to address luminaires and configure your lighting system offline or interactively. With offline configuration, you stage and configure your system off-site, prior to installation. Offline configuration can be convenient when luminaires are to be installed in multiple locations or locations with difficult access. Interactive configuration is typically performed by an experienced technician, after luminaires have been installed. The interactive method can save time, since you only connect and test your luminaires once.

Accessories

	Item Number	Item 12NC
Leader Cable, UL, 3 m (10 ft)	108-000065-00	912400133637
Leader Cable, CE/CCC, 3 m (10 ft)	108-000065-01	912400133638
Jumper Cable, UL, 305 mm (1 ft)	108-000066-00	912400133639
Jumper Cable, CE/CCC, 305 mm (1 ft)	108-000066-01	912400133640
Jumper Cable, UL, 1.5 m (5 ft)	108-000066-02	912400133641
Jumper Cable, CE/CCC, 1.5 m (5 ft)	108-000066-03	912400133642
Louver, 305 mm (1 ft)	120-000192-02	912400133647
Masking Plate, 305 mm (1 ft)	120-000213-01	912400136912
Masking Plate, 1219 mm (4 ft)	120-000213-04	912400136913
Mounting Track, White	120-000194-00	912400133643
End Of Run Diffusers, Bag of 10	120-000196-00	912400134527
Wiring Compartment, UL	120-000191-00	912400133644
Power Supplies		
Data Enabler Pro, 3/4 in / 1/2 in NPT (U.S. trade size conduit)	106-000004-00	910503701210
Data Enabler Pro, PG21/PG13 (metric size conduit)	106-000004-01	910503701211

Specifications and Information

Measurements for 305 mm (1 ft) luminaire shown. Additional measurements can be found on the PureStyle Compact product pages.


Products	Lengths	Power consumption	Lumens per foot	Efficacy lm/W	CRI	CRI R9
PureStyle Compact Powercore, IntelliHue	305 mm (12 in) 1219 mm (48 in)	5 to 28 W	149 to 480	36.7 to 75.9	95 to 96	67 to 88
PureStyle Compact Powercore, RGBA	305 mm (12 in) 1219 mm (48 in)	5 to 28 W	147 to 424	35.8 to 66.8	–	–

General information


Beam Angles	60° x 90° (with glare-reducing lens) 100° x 100°
LED Channels	IntelliHue—Red/Green/Blue/Mint White RGBA—Red/Green/Blue/Amber
Input Voltage	100 to 277 VAC, auto-ranging, 50/60 Hz
Housing Material	White polycarbonate
Lens	Polycarbonate
Approbations	UL/cUL, FCC Class B, CE, PSE, RCM, CCC, BIS, EAC, UA
Environment	Dry/Damp Location, IP20
Weight	305 mm (12 in)—0.24 kg (0.53 kg) 1219 mm (48 in)—0.75 kg (1.65 lb)
Dimensions	305 mm (12 in)—37.5 x 305 x 37 mm (1.48 x 12 x 1.46 in) 1219 mm (48 in)—37.5 x 1205 x 37 mm (1.48 x 47.44 x 1.46 in)

For further information

PureStyle is available in two different light options, and one housing color. It can be fitted with an array of accessories specifically designed for the luminaire family. Complete details of every family, including Installation Instructions, Specification Sheets, .ies files, and product drawings, can be found on the product page. Additionally, we can engineer unique solutions to exactly fit your specific lighting project needs.



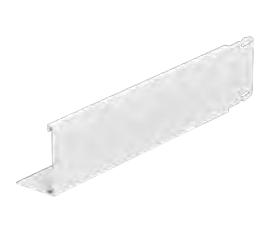
PureStyle Compact Powercore, IntelliHue



PureStyle Compact Powercore, RGBA

Accessories

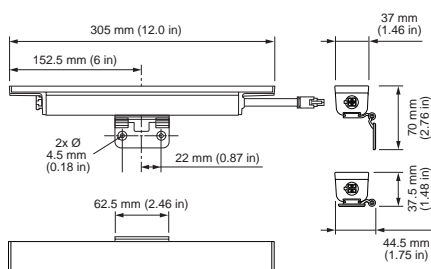
Accessory options let you customize PureStyle Compact.



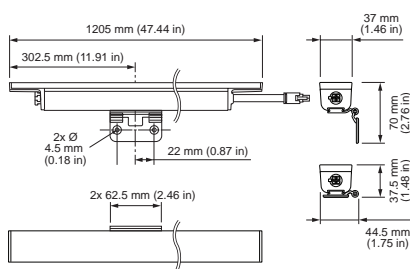
Glare reducing lens, masking plates, and mounting track

Dimensions and Configurations

305 mm (12 in)



1219 mm (48 in)



Configuration and planning

Regardless of the size and complexity of your installation, the planning time you spend up front can help streamline the installation and configuration of your luminaires. Keep these points in mind as you plan your installation:

Configuration Calculator

Create a lighting design plan that identifies and locates all luminaires, Data Enabler Pro devices, and controllers. Use **Configuration Calculator** to determine how many luminaires you can install in a single run, and the maximum distances between Data Enabler Pro devices, luminaires, and controllers.

QuickPlay Pro

PureStyle Compact luminaires operate in 8-bit mode by default. To address luminaires, including switching between 8-bit mode and 16-bit mode download **QuickPlay Pro**.

Additional Considerations

Determine whether to address luminaires and configure your lighting system offline or interactively. With offline configuration, you stage and configure your system off-site, prior to installation. Offline configuration can be convenient when luminaires are to be installed in multiple locations or locations with difficult access. Interactive configuration is typically performed by an experienced technician, after luminaires have been installed. The interactive method can save time, since you only connect and test your luminaires once.

Accessories

	Item Number	Item 12NC
Leader Cable, 3 m (10 ft), CE/CCC	108-000065-01	912400133638
Leader Cable, 3 m (10 ft), UL	108-000065-00	912400133637
Jumper Cable, 306 mm (1 ft), CE/CCC	108-000066-01	912400133640
Jumper Cable, 305 mm (1 ft), UL	108-000066-00	912400133639
Jumper Cable, 1.5 m (5 ft), CE/CCC	108-000066-03	912400133642
Jumper Cable, 1.5 m (5 ft), UL	108-000066-02	912400133641
Glare-reducing Lens, 1219 mm (4 ft)	120-000214-04	912400136915
Glare-reducing Lens, 305 mm (1 ft)	120-000214-01	912400136914
Masking Plate, 305 mm (1 ft)	120-000213-01	912400136912
Masking Plate, 1219 mm (4 ft)	120-000213-04	912400136913
Mounting Track, 1220 mm (4 ft) White	120-000194-00	912400133643
Wiring Compartment, UL	120-000191-00	912400133644
Power Supplies		
Data Enabler Pro, PG21/PG13 (metric size conduit), 100-277 VAC	106-000004-01	910503701211
Data Enabler Pro, 3/4 in / 1/2 in NPT (US trade size conduit), UL	106-000004-00	910503701210

Specifications and Information

Measurements for 305 mm (1 ft) luminaire shown. Additional measurements can be found on the EvenBalance product pages.

Products	Lengths	Power consumption	Lumens per foot	Efficacy lm/W	CRI
EvenBalance Essential White Powercore	305 mm (12 in) 1219 mm (48 in)	12.5 W/ft	764 to 927	64.9 to 79.3	81 to 83

General information

Beam Angles	10° x 60° (Narrow), 30° x 60° (Medium), 100° x 100° (Wide)
LED Channels	eW—2700 K, 3000 K, 3500 K, or 4000 K
Input Voltage	100 to 277, auto-ranging, 50/60 Hz
Housing Material	Die-cast aluminium, white powder-coated finish
Lens	Polycarbonate
Approbations	UL/cUL, FCC Class B, CE, C-Tick, CCC
Environment	Dry/Damp Location, IP20
Weight	305 mm (12 in)—445 g (0.98 lb) 1219 mm (48 in)—1.98 kg (4.37 lb)
Dimensions	305 mm (12 in)— 54 x 305 x 39 mm (2.1 x 12 x 1.5 in) 1219 mm (48 in)—54 x 1219 x 41 mm (2.1 x 48 x 1.6 in)

For further information

EvenBalance is available in one light option, and one housing color. It can be fitted with an array of accessories specifically designed for the luminaire family. Complete details of every family, including Installation Instructions, Specification Sheets, .ies files, and product drawings, can be found on the product page. Additionally, we can engineer unique solutions to exactly fit your specific lighting project needs.



EvenBalance Essential White Powercore

Accessories

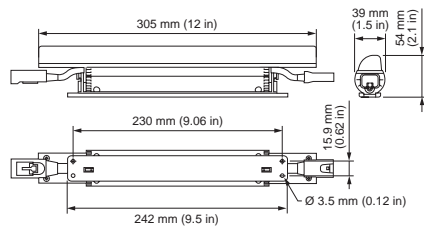
Accessory options let you customize EvenBalance.



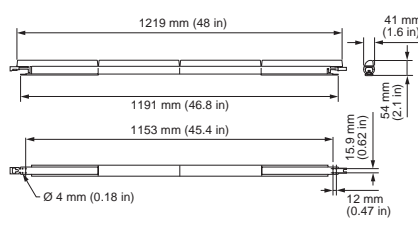
Mounting track

Dimensions and Configurations

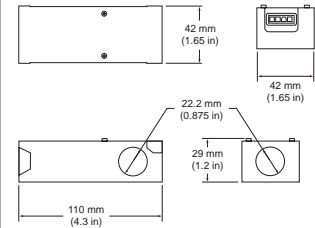
305 mm (12 in)



1219 mm (48 in)



Wiring Compartment



Configuration and planning

Regardless of the size and complexity of your installation, the planning time you spend up front can help streamline the installation and configuration of your luminaires. Keep these points in mind as you plan your installation:

Configuration Calculator

Create a lighting design plan that identifies and locates all luminaires. Use **Configuration Calculator** to determine how many luminaires you can install in a single run, and the maximum distances between luminaires.

Dimming Capability

Patented DIMand technology offers smooth dimming capability with selected commercially available reverse-phase ELV-type dimmers. **More about dimming.**

Accessories

	Item Number	Item 12NC
Leader Cable with Terminator and Strain Relief, CE/CCC, 3 m (10 ft)	108-000047-01	910503700973
Leader Cable with Terminator and Strain Relief, UL/cUL, 3 m (10 ft)	108-000047-00	910503700972
Jumper Cable, CE/CCC, 305 mm (12 in)	108-000048-02	910503700976
Jumper Cable, CE/CCC, 1.5 m (5 ft)	108-000048-03	910503700977
Jumper Cable, UL/cUL, 305 mm (12 in)	108-000048-00	910503700974
Jumper Cable, UL/cUL, 1.5 m (5 ft)	108-000048-01	910503700975
Mounting Track, White, 1219 mm (4 ft)	120-000124-00	910503701787
Terminators, Box of 10	120-000099-00	910503701120
Wiring Compartment with Terminator, UL/cUL, 44.5 x 44.5 x 111.1 mm (1.75 x 1.75 x 4.38 in)	120-000077-01	910503700994
DM-1000 0-10 V ELV Dimmer	109-000036-00	912400135916

Specifications and Information

Measurements for 305 mm (1 ft) luminaire shown. Additional measurements can be found on the Cove product pages.

Products	Lengths	Power consumption	Lumens per foot	Efficacy lm/W	CRI
eW Cove MX Powercore	305 mm (1 ft) 1.2 m (4 ft)	8 W/ft 12.5 W/ft	306 to 696	32.3 to 70.4	82 to 84
eW Cove QLX Powercore	154 mm (6 in) 305 mm (1 ft) 1.2 m (4 ft)	4 to 6 W/ft	306 to 432	68.7 to 87.3	93 to 96
eColor Cove MX Powercore	305 mm (1 ft) 1.2 m (4 ft)	10 to 12.5 W/ft	–	–	–

General information

Beam Angles	eW MX—50° x 70°, 125° x 120° eW QLX—60° x 90° medium and 110° x 110° wide eColor MX— 50° x 70° and 125° x 120°
LED Channels	eW MX—2200 K, 2700 K, 3000 K, 3500 K, or 4000 K eW QLX—2700 K, 3000 K, 3500 K, or 4000 K eColor—Red, Green, Blue, or Amber
Input Voltage	MX—100 to 277 VAC, auto-ranging, 50/60 Hz QLX—120 VAC/220 to 240 VAC/277 VAC, 50/60 Hz
Housing Material	MX—Die-cast aluminium, white powder-coated finish QLX—Injection-molded plastic, white finish
Lens	Polycarbonate
Approbations	MX—UL/cUL, FCC Class B, CE, PSE, C-Tick, CCC, SAA QLX—UL/cUL, FCC Class B, CE, C-Tick, CCC, SAA
Environment	Dry/Damp Location, IP20
Weight	Cove MX 305 mm (12 in)—372 g (0.82 lb) to 454 g (1 lb), 1.2 m (4 ft)—1.8 kg (3.97 lb) to 2 kg (4.41 lb) Cove QLX 154 mm (6 in)—116 g (0.25 lb), 305 mm (12 in)—186 g (0.41 lb), 1.2 m (4 ft)—910 g (2 lb)
Dimensions	eW Cove MX, 50° x 70° 305 mm (12 in) - 51 x 305 x 38 mm (2 x 12 x 1.5 in) 1.2 m (4 ft) - 51 x 1219 x 41 mm (2 x 48 x 1.6 in) eW Cove MX, 125° x 120° 305 mm (12 in)—42 x 305 x 38 mm (1.64 x 12 x 1.5 in) 1.2 m (4 ft)—42 x 1219 x 41 mm (1.64 x 48 x 1.6 in) eW Cove QLX, 60° x 90° 154 mm (6 in)—40 x 153 x 32 mm (1.56 x 6 x 1.25 in) 305 mm (12 in)—40 x 305 x 32 mm (1.56 x 12 x 1.25 in) 1.2 m (4 ft)—49 x 1219 x 38 mm (1.94 x 48 x 1.5 in) eW Cove QLX, 110° x 110° 154 mm (6 in)—35 x 153 x 32 mm (1.37 x 6 x 1.25 in) 305 mm (12 in)—35 x 305 x 32 mm (1.37 x 12 x 1.25 in) 1.2 m (4 ft)—47 x 1219 x 38 mm (1.88 x 48 x 1.5 in) eColor Cove MX, 50° x 70° 305 mm (12 in)—51 x 305 x 38 mm (2 x 12 x 1.5 in) 1.2 m (4 ft)—51 x 1219 x 41 mm (2 x 48 x 1.6 in) eColor Cove MX, 125° x 120° 305 mm (12 in)—42 x 305 x 38 mm (1.64 x 12 x 1.5 in) 1.2 m (4 ft)—42 x 1219 x 41 mm (1.6 x 48 x 1.6 in)

For further information

Cove is available in two different light options, and one housing color. It can be fitted with an accessory specifically designed for the luminaire family. Complete details of every family, including Installation Instructions, Specification Sheets, .ies files, and product drawings, can be found on the product page. Additionally, we can engineer unique solutions to exactly fit your specific lighting project needs.



eW Cove MX Powercore



**eW Cove QLX
Powercore**



**eColor Cove MX
Powercore**

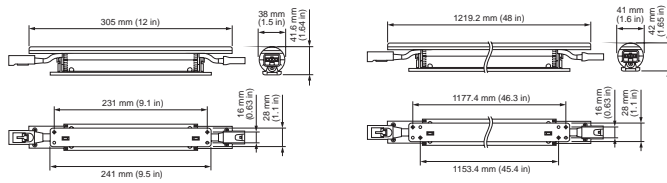
Accessories

Accessory options let you customize Cove.

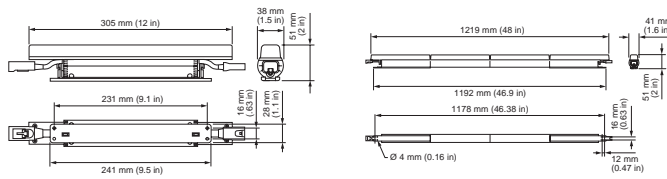


Mounting tracks

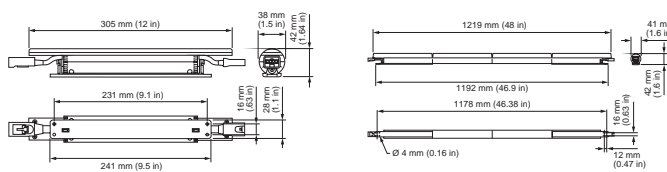
305 mm (12 in) & 1219 mm (48 in)



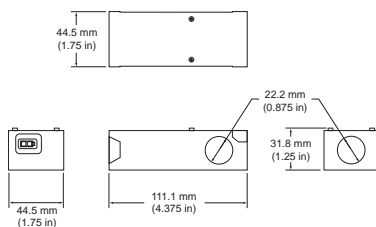
305 mm (12 in) & 1219 mm (48 in)



305 mm (12 in) & 1219 mm (48 in)

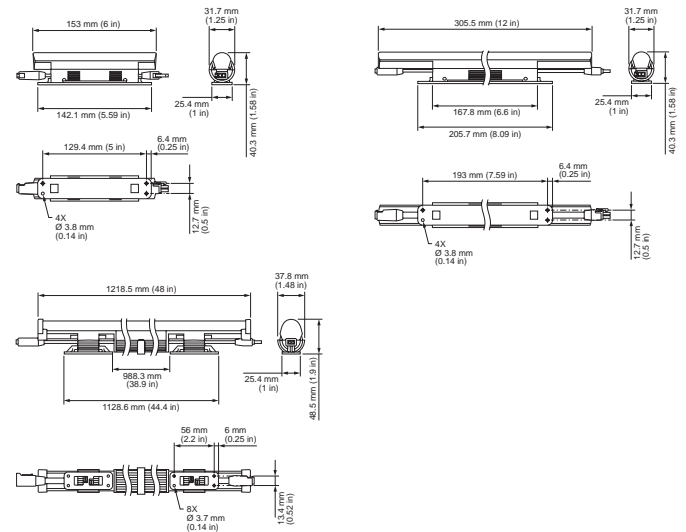


Cove MX Wiring Compartment



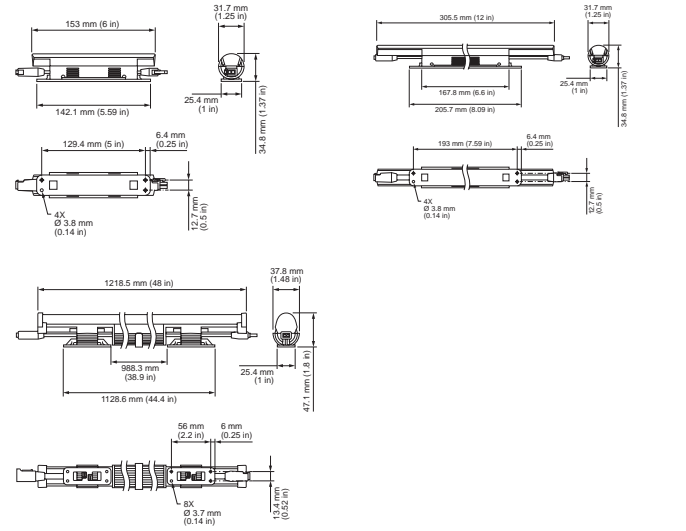
eW Cove Q LX, 60° x 90°

153 mm (6 in), 305 mm (12 in), & 1219 mm (48 in)

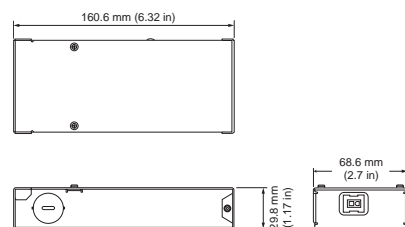


eW Cove Q LX, 110° x 110°

153 mm (6 in), 305 mm (12 in), & 1219 mm (48 in)



Cove QLX Wiring Compartment



Configuration and planning

Regardless of the size and complexity of your installation, the planning time you spend up front can help streamline the installation and configuration of your luminaires. Keep these points in mind as you plan your installation:

Cove size and luminaire setback guidelines

Choosing the appropriate luminaire for your installation depends on a number of factors, including size and shape of the architectural feature, viewing angles, desired effect, safe operating temperatures, mixing distance, surface reflection and others.

These measurements are meant as general guidelines. Because specific dimensions and positioning will change depend on the details of your installation, we strongly recommend creating dimensional models and mock ups prior to installation.

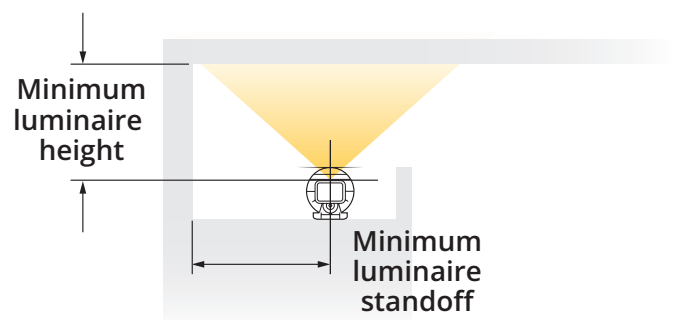
Assumptions

Mixing distance is measured at the center of luminaire runs. Mixing distance at the ends of luminaire runs or for single luminaire used in isolation will increase significantly, and attention should be given to avoid unwanted effects.

Luminaires are assumed to be set to all channels full-on. Turning on only one channel can increase mixing distances.

Measurements assume coves with matte white surfaces.

Luminaire	Beam Angles	Min. Luminaire Height	Min. Luminaire Standoff
eW Cove MX Powercore & eColor Cove MX Powercore	50° x 70° 125° x 120°	864 mm (34 in) 546 mm (21.5 in)	305 mm (12 in) 305 mm (12 in)
eW Cove QLX Powercore	60° x 90° 110° x 110°	146 mm (5.75 in)	127 mm (5 in)



Minimum mixing distance is based on the interior height of the cove and the luminaires standoff.

Accessories

Cove MX

	Item Number	Item 12NC
Leader Cable with Terminator and strain relief, 3.1 m (10 ft), CE/CCC	08-000047-01	910503700973
Leader Cable with Terminator and strain relief, 3.1 m (10 ft), UL/cUL	108-000047-00	910503700972
Jumper Cable, 305 mm (1 ft), CE/CCC	108-000048-02	910503700976
Jumper Cable, 305 mm (1 ft), UL/cUL	108-000048-00	910503700974
Jumper Cable, 1.5 m (5 ft), CE/CCC	108-000048-03	910503700977
Jumper Cable, 1.5 m (5 ft), UL/cUL	108-000048-01	910503700975
Mounting Track, White, 1 @ 1219 mm (4 ft)	20-000124-00	910503701787
Terminators, Quantity 10	120-000099-00	910503701120
Wiring Compartment with Terminator, UL/cUL	120-000077-01	910503700994
DM-1000 0-10 V ELV Dimmer	109-000036-00	912400135916

Cove QLX

Leader Cable with Terminator, CE/CCC, 3 m (10 ft), White	108-000032-13	912400130573
Leader Cable with Terminator, UL/cUL, 3 m (10 ft), White	108-000032-12	912400130572
Jumper Cable, CE/CCC, 305 mm (1 ft), White	108-000033-08	910503700897
Jumper Cable, UL/cUL, 305 mm (1 ft), White	108-000033-06	910503700895
Jumper Cable, CE/CCC, 1.5 (5 ft), White	108-000033-09	910503700898
Jumper Cable, UL/cUL, 1.5 (5 ft), White	108-000033-07	910503700896
Mounting Track, 1 @ 1219 mm (4 ft), White	120-000125-00	910503701788
Wiring Compartment with Terminator, White	120-000076-01	912400130576
DM-1000 0-10 V ELV Dimmer	109-000036-00	912400135916

Specifications and information

Measurements for 305 mm (1 ft) luminaire shown. Additional measurements can be found on the Fuse product pages.


Products	Lengths	Power consumption	Lumens per foot	Efficacy lm/W	CRI
eW Fuse Powercore	305 mm (12 in) 1219 mm (48 in)	8 W/ft 12.5 W/ft	442 to 697	45.7 to 70.8	80 to 84
eColor Fuse Powercore	305 mm (12 in) 1219 mm (48 in)	12.5 W 50 W	–	–	–

General information

Beam Angles	10° x 60°, 30° x 60°
LED Channels	eW—2700 K, 3000 K, 3500 K, or 4000 K eColor—Red, Green, Blue, or Amber
Input Voltage	100 to 277 VAC, auto-ranging, 50/60 Hz
Housing Material	Die-cast aluminium, white powder-coated finish
Lens	Polycarbonate
Approbations	UL/cUL, FCC Class B, CE, C-Tick, CCC, SAA
Environment	Dry/Damp Location, IP20
Weight	305 mm (12 in)—0.45 kg (0.98 lb) 1219 m (4 ft)—1.98 kg (4.37 lb)
Dimensions	305 mm (12 in)—54 x 305 x 39 mm(2.12 x 12 x 1.56 in) 1219 m (4 ft)—53 x 1219 x 41 mm(2.06 x 48 x 1.62 in)

For further information

Fuse is available in two light options, and one housing color. It can be fitted with an array of accessories specifically designed for the luminaire family. Complete details of every family, including Installation Instructions, Specification Sheets, .ies files, and product drawings, can be found on the product page. Additionally, we can engineer unique solutions to exactly fit your specific lighting project needs.




eW Fuse Powercore



eColor Fuse Powercore

Accessories

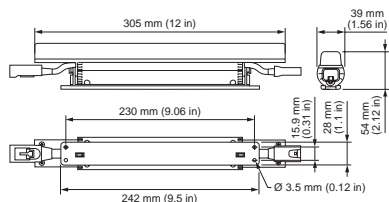
Accessory options let you customize Fuse.



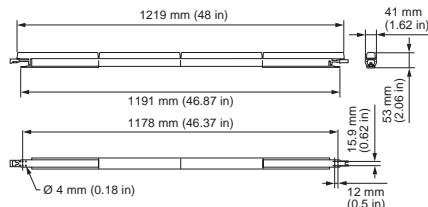
Mounting track and diffusers

Dimensions and Configurations

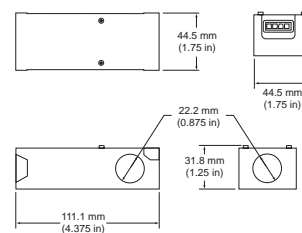
305 mm (12 in)



1219 mm (48 in)



Wiring Compartment



Configuration and planning

Regardless of the size and complexity of your installation, the planning time you spend up front can help streamline the installation and configuration of your luminaires. Keep these points in mind as you plan your installation:

Configuration Calculator

Create a lighting design plan that identifies and locates all luminaires. Use **Configuration Calculator** to determine how many luminaires you can install in a single run, and the maximum distances between luminaires.

Dimming capability

Patented DIMand technology offers smooth dimming capability with selected commercially available reverse-phase ELV-type dimmers. **More about dimming.**

Accessories

	Item Number	Item 12NC
Leader Cable with Terminator and Strain Relief, UL/cUL, 3 m (10 ft)	108-000047-00	910503700972
Leader Cable with Terminator and Strain Relief, UL/cUL, 3 m (10 ft)	108-000047-00	910503700973
Jumper Cable, CE/CCC, 305 mm (1 ft)	108-000048-02	910503700976
Jumper Cable, UL/cUL, 305 mm (1 ft)	108-000048-00	910503700974
Jumper Cable, CE/CCC, 1.5 m (5 ft)	108-000048-03	910503700977
Jumper Cable, UL/cUL, 1.5 m (5 ft)	108-000048-01	910503700975
Mounting Track, White, Quantity 1, 1219 mm (4 ft)	120-000124-00	910503701787
Terminators, 10/Box	120-000099-00	910503701120
Wiring Compartment with Terminator	120-000077-01	910503700994
DM-1000 0-10 V ELV Dimmer	109-000036-00	912400135916

© 2020 Signify Holding. All rights reserved. The information provided herein is subject to change, without notice. Signify does not give any representation or warranty as to the accuracy or completeness of the information included herein and shall not be liable for any action in reliance thereon. The information presented in this document is not intended as any commercial offer and does not form part of any quotation or contract, unless otherwise agreed by Signify.

All trademarks are owned by Signify Holding or their respective owners.

Cover photography credits: Signify Belgium



www.colorkinetics.com