



by Signify

Wall Sconce

GEOFORM

GWS,GWM,GBS,GBM,GCS

442296087541

IMPORTANT: FOR YOUR PROTECTION, YOU MUST CAREFULLY READ ALL WARNINGS AND INSTRUCTIONS IN THEIR ENTIRETY PRIOR TO INSTALLATION, OPERATION, SERVICE OR MAINTENANCE. FAILURE TO DO SO CAN RESULT IN DEATH, PERSONAL INJURY AND PROPERTY DAMAGE. If you do not understand these warnings and instructions, or if additional information is desired, please contact Signify, Gardco. TSC@signify.com phone 1-833-744-6439.



- Installation, service and maintenance of luminaires must be performed by a qualified professional and in accordance with all federal, state and local laws, regulations and electrical codes. This professional should be familiar with the construction and operation of this product and any hazards involved. If not qualified, do not attempt installation, service or maintenance.
- To reduce the risk of death, personal injury or property damage from fire, electric shock, falling parts, cuts, abrasions and other hazards, please read all warnings and instructions included with the luminaire, on the luminaire's packaging and affixed to the luminaire itself.
- Maintenance of the luminaires should be performed by person(s) familiar with the luminaire's construction and operation and any hazards involved.



WARNING
RISK OF FIRE, ELECTRIC SHOCK OR PERSONAL INJURY

- Disconnect or turn off power before attempting any installation, service or maintenance.
- Verify that supply voltage is correct by referencing the luminaire label information.
- Make all electrical and ground connections in accordance with the National Electrical Code (NEC) and any other applicable laws, regulations or codes.
- All wiring connections should be capped with UL-approved wire connectors.



WARNING
RISK OF FIRE, ELECTRIC SHOCK OR PERSONAL INJURY

- Wear gloves and safety glasses at all times when removing luminaire from carton, installing, servicing or performing maintenance.
- Avoid direct eye exposure to the light source while it is on.



WARNING
RISK OF FIRE OR PERSONAL INJURY

- Keep combustible materials away from LED/lamp & lens
- Do not operate in close proximity to persons, combustible materials or substances affected by heat or drying.



WARNING
RISK OF FIRE, ELECTRIC SHOCK OR PERSONAL INJURY

- Allow Led/lamp & lens to cool before handling.
- Do not touch enclosure or light source
- Do not exceed maximum wattage marked on luminaire label.
- Follow all manufacturer's warnings, recommendations, instructions and restrictions for driver type, burning position, mounting locations and replacement.



CAUTION
RISK OF PRODUCT DAMAGE

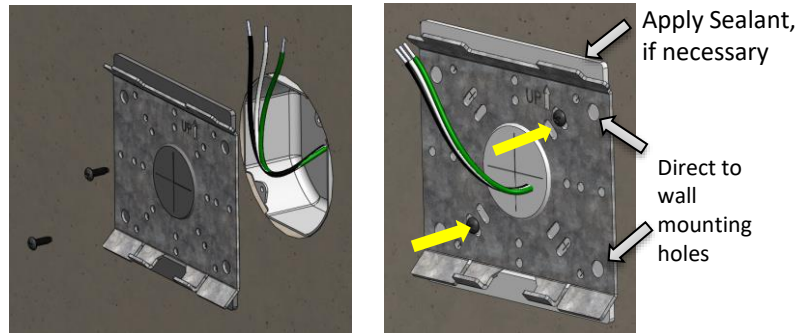
- Never connect luminaires and/or components under load with supply voltage turned on.
- Do not mount or support these luminaires in a manner that can cut the outer jacket or damage wire insulation.
- Do not restrict fixture ventilation. Allow for some volume of airspace around luminaire. Avoid covering luminaire with insulation, foam or other material that will prevent convection or conduction cooling.
- Do not exceed luminaire maximum ambient temperature.
- Do not modify the luminaire.
- Only use luminaire in its intended application and location.
- Led products are polarity sensitive. Ensure proper polarity before installation.
- Electrostatic Discharge (ESD) can damage LED. Personal grounding equipment must be worn during all installation and servicing of the luminaire.
- Do not touch individual electrical components as this can cause ESD, shorten LED life, or impact LED performance.
- Some components inside the luminaire may not be serviceable. In the unlikely event your luminaire may require service, stop using it immediately and contact Signify.
- Always read the luminaires complete installation instructions prior to installation for any additional luminaire specific warnings.
- In the case of HID or Fluorescent luminaires, regular re-lamping is required to keep luminaire operating within safe limits
- **Do not install damaged product.** Handling and installing damaged products can potentially increase the risks mentioned In case of damage and/or missing parts upon arrival of the luminaire.
- These instructions do not purport to cover all details or variations in equipment nor to provide every possible contingency to meet in connection with installation, operation or maintenance.
- Please see luminaire specific Installation and Maintenance Instruction for additional warnings or any applicable FCC or regulatory statements. Failure to follow any of these Instructions could void luminaires warranties.

Luminaire Maintenance

- Regular luminaire maintenance programs are recommended.
- It is recommended to clean the outside of the luminaire and the refractor/lens.
- Frequency of cleaning will depend on ambient dirt level and minimum light output which is acceptable to user.
- If clean water is not sufficient for cleaning, use a neutral, synthetic, not-scratching and not-abrasive cleaning substance.
- Never use alkaline and/or acetous cleaning substances.
- Make sure that the cleaning substance is carefully removed by rinsing with lots of clean water.
- Signify recommends using a cleaning solution that has a PH between 5 and 8.
- Recycle: For information on how to recycle electronic products and components, please visit www.epa.gov.

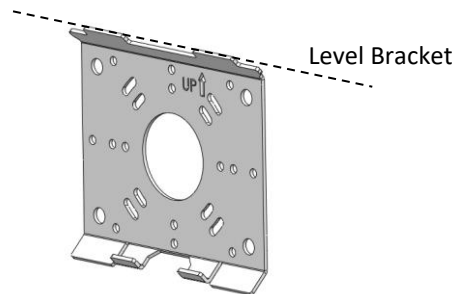
Wall Mount installation steps

1. Install the Wall Mount Bracket with gasket to the J-Box. Apply 12 in-lbs torque until the gasket between wall and Wall Mount Bracket is properly compressed.



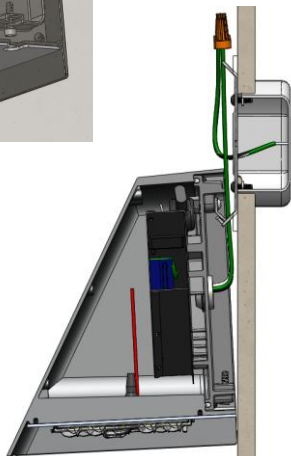
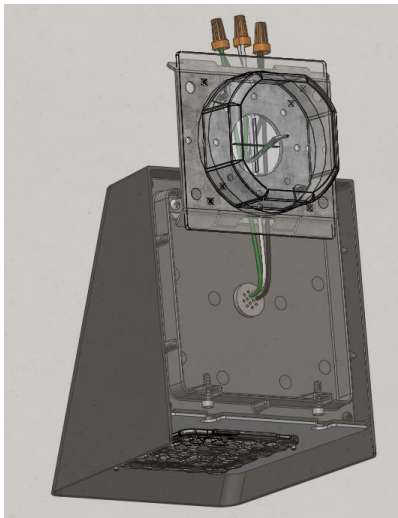
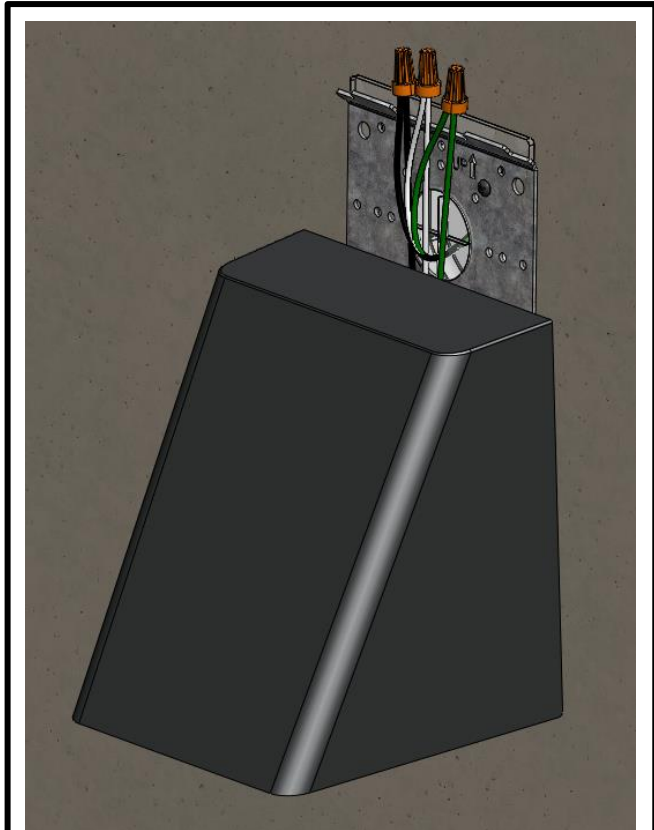
Notice: In case of irregular surface, cut extra foam gasket on top/bottom before to apply sealant around the Mounting plate.

2. Make sure the Wall Mount Bracket is properly leveled;



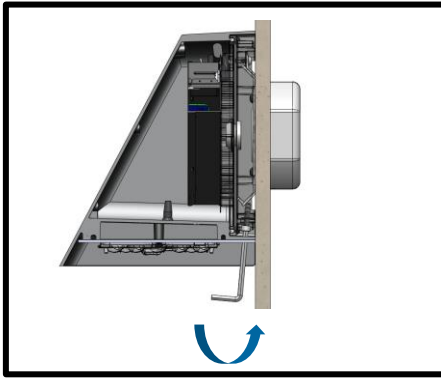
3. Hold the fixture by the 2 hooks to the bottom of Wall Mounting Bracket. Make sure the wire pass in the middle between them;
4. Once luminaire is installed and hardware is properly torqued, make supply wiring connections according to the appropriate wiring diagram.

- 0-10V AND OVERRIDE WIRES OPTIONAL
- WIRE NUTS SUPPLIED BY OTHERS



Note: Signify is not responsible for improper installation and/or water intrusion into building structure

120V, 277V & 347V CONFIGURATIONS		208V, 240V & 480V CONFIGURATIONS	
INPUT (POLE)	OUTPUT (LUMINAIRE)	INPUT (POLE)	OUTPUT (LUMINAIRE)
(BLK) LINE	LINE (BLK)	(BLK) LINE	LINE (BLK)
(WHT) NEUTRAL	NEUTRAL (WHT)	(WHT) LINE	LINE (WHT)
(GRN) GROUND	GROUND (GRN)	(GRN) GROUND	GROUND (GRN)
(PURP) 0-10V (+)	(+) 0-10V (PURP)	(PURP) 0-10V (+)	(+) 0-10V (PURP)
(GRY) 0-10V (-)	(-) 0-10V (GRY)	(GRY) 0-10V (-)	(-) 0-10V (GRY)



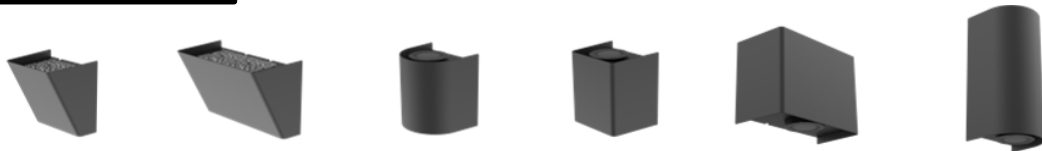
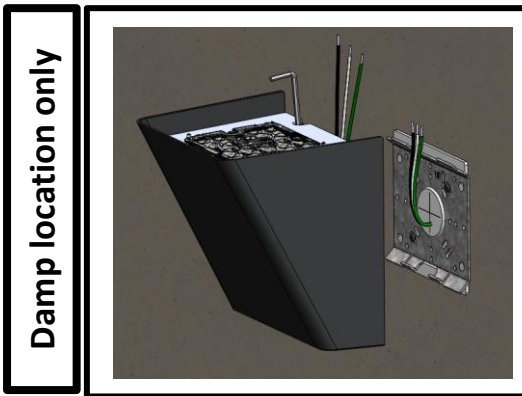
GWS Wall Mount installation steps

5. Insert all connector inside the J-Box;
6. With All Key 5/32", tighten the Mounting screws to allow the fixture to rest against the wall & Level it.

GWS Wall Mount installation (INVERTED)

- Depending on the Luminaires could be installed Inverted for Damp and Wet Locations.
- Only GeoForms with Light Effect can be Inverted for Wet Locations. Percision Plus Types Optics should not be mounted in Damp Locations ONLY
- Inverted GeoForms should be ordered with Safety Cable Accessory Kit

NOTICE: the unit cannot be hold by the hooks when inverted. Need to hold the fixture for wiring connections.

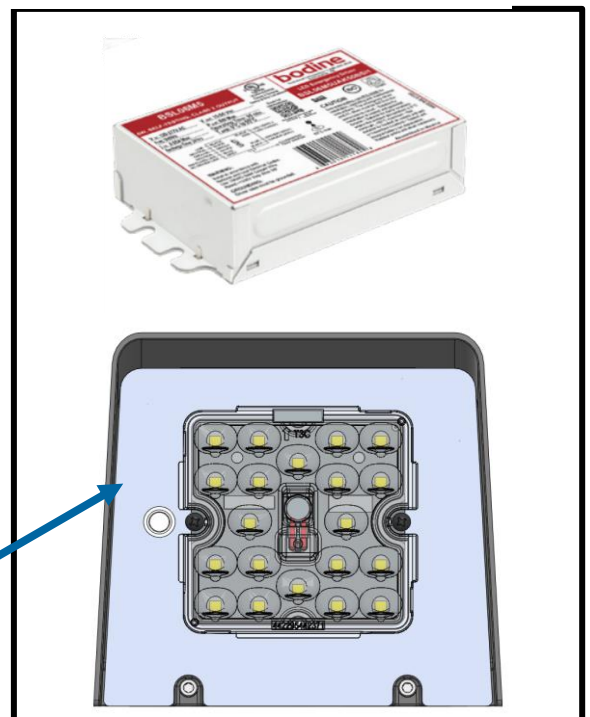


Light Effects	X	X	✓	✓	✓	✓
Inverted Location,	✓ Damp	✓ Damp	✓ Wet	✓ Wet	✓ Wet	✓ Wet
Up and downlight	X	X	X	X	✓	✓

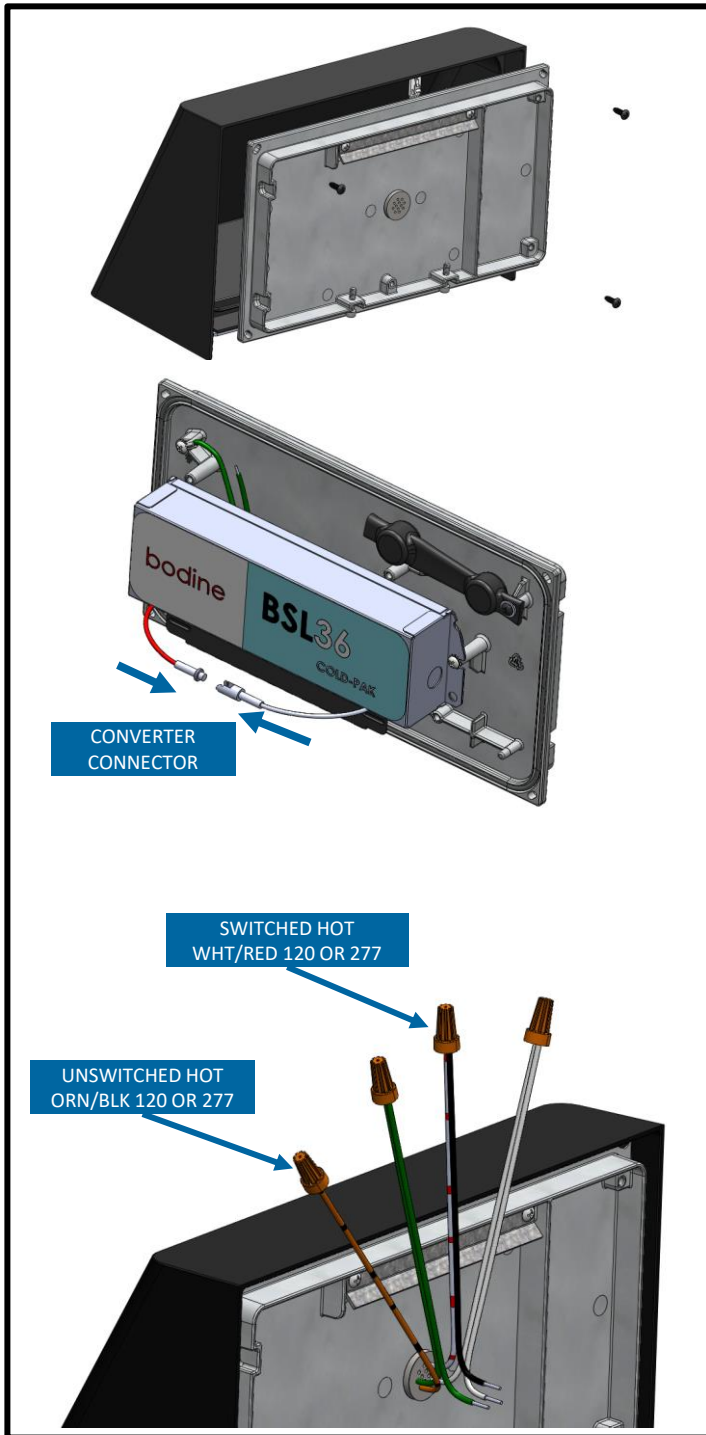
Emergency option GWS, GBS & GCS with BLS06M5

- After the power supply is connected to the luminaire, charging Indicator Light at the test switch should illuminate indicating the battery is charging.
- A short-term discharge test may be conducted after the emergency driver has been charged for one hour. Charge for 24 hours before conducting a long-term discharge test.
- **To deactivate the unit for storage or shipping**, press and hold the test button while the unit is in emergency mode until the LED load is turned off.

Test Switch



Emergency option GWM & GBS with BLS36M Cold Pack



1. Before to connect the power supply, remove the Back plate sub- assembly to get access to the Emergency driver;
2. Plug the Converter Connector together and reinstall the Back plate sub-assembly. Apply 12 in-lbs of torque;
3. Make the supply wiring connections according to the appropriate wiring diagram (page 2);
4. During normal operation AC power is applied and the converter connector is closed, the charging indicator light is illuminated, indicating that the battery is being charged. When power fails, the emergency LED driver automatically switches to emergency power (internal battery), operating the LED load for a minimum of 90 minutes. When AC power is restored, the emergency driver returns to the charging mode.

