



Calculite LED 4" generation 3 features industry leading visual comfort and patented installation flexibility. MesoOptics soft focus optics provides excellent uniform illumination and color consistency at articulated angles. Ideal for use in open office, retail, hospitality, healthcare, and residential applications.

Project: _____

Location: _____



Cat.No: _____

Type: _____

Qty: _____

Notes: _____

Follow the ordering guidelines below. Each step is a separate order line.

Step 1	Frame: Ordered & shipped separately.		
	Frame <div>4AR</div>	Example: 4ARN	
Step 2	Engine & Trim: Ordered & shipped as a single product.		
	Engine <div>C4</div>	<div>- C4</div>	Example: C4RA20930NSZ10U-C4RACC
Step 3 (optional)	Accessories: Ordered & shipped separately.		

Frame

example: 4ARN

Series	Installation	Voltage / Options
4AR 4" Round for C4R Engine 4AS 4" Square for C4S Engine	N Non-IC A AirSeal (IC) ¹	LC Chicago Plenum — Universal (120V-347V) — Standard Universal (120V-347V) EM6 Emergency, 6W Self-Test/Self-Diagnostic ²

Engine


example: C4RA20930NSZ10ULS6010

Series	Lumens	CRI/CCT	Beam	Dimming	Options	Voltage	Options	Plenum
C4RA 4" Round Adjustable Accent	05 500lm 10 1000lm 15 1500lm 20 2000lm	927 90CRI/2700K 930 90CRI/3000K 935 90CRI/3500K 940 90CRI/4000K	NS Narrow Spot (13°) ⁵ NF Narrow Flood (23°) FL Flood (33°) WF Wide Flood (52°)	Z10 0-10V 1% L01 Lutron PEQ0 0.1% (up to 2000lm) L1 Lutron LDE1 1% (500lm not available) LD Lutron L3D 1% (500lm not available)	— None D20 Dim to Off — None	U 120/277V 3 347V (Z10 only) U 120/277V For 347V order T347-75VA accessory	— Symmetrical soft focus LS6010 Linear spread 60x10 ASY8 Asymmetric 8° bend angle ASY21 Asymmetric 21° bend angle	— Standard R Remodeler ⁶
C4SA 4" Square Adjustable Accent	25 2500lm ¹ 30 3000lm ¹ 35 3500lm ¹ 40 4000lm ¹	9D2W 90CRI/3000 -1800K ³ 96T 90CRI/2700 -6500K tunable white ⁴		DALI DALI 0.1% SOL EldoLED Solo 0-10V 0.1% DMX Digital Multiplexing w/RDM 0.1%	— None LIN Linear SQR Square			
				RA Interact Pro ⁷ E Forward & Reverse Phase (up to 2000lm)				

C4RA/C4SA Calculite LED 4" gen 3

Round & Square Adjustable Accent

Trim example: C4RACLF

Series	Finish	Flange	Options
			
C4RA 4" Round Adjustable Accent	CL Specular clear CC Comfort clear CD Comfort clear diffuse CZ Champagne bronze (C4RA only)	- White (matte) P Polished (matches aperture) – C4RA round trim only B Black (matte) A Aluminum (painted) – C4SA square trim only F Flangeless (requires mud-in ring)	WL Wet location
	WT Textured White (painted) BZ Textured bronze (painted) D Aluminum diffuse (painted)	- White (matte) P Polished (matches aperture) B Black (matte) F Flangeless (requires mud-in ring)	
	BK Black (C4RA is anodized, C4SA is matte) BT Textured Black (painted)	- White (matte) P Polished (matches aperture) F Flangeless (requires mud-in ring)	
	WH White (matte) WHAMF White (gloss antimicrobial)	- White (matches finish) F Flangeless (requires mud-in ring)	

Accessories

CA4RFMR	Mud-in ring for use in 4" Round flangeless trim installations (ordered with a flangeless trim)
CA4SFMR	Mud-in ring for use in 4" Square flangeless trim installations (ordered with a flangeless trim)
CAEM6	Field-installable Bodine BSL6 6W battery pack with self-test/self-diagnostic (for new construction frames, 120-277V) (see page 3 for details)
CAEM6TSCP	Emergency test switch mounting plate. Must be ordered with EM6 frame for remote test switch (see page 6 for details)
SWCS	Interact Ready System Bridge accessory w/integral occupancy & daylight sensor (compatible with all 0-10v options, see SWCS spec sheet) – Requires IRT9015 IR remote & Interact Pro App for commissioning.
T347-75VA	347-120V step-down transformer for non-IC (N) frame only (see page 3 for details)

Optical Accessories (field-installable)

CA4NSRPO	Narrow Spot upper reflector
CA4NFRPO	Narrow Flood upper reflector
CA4FLRPO	Flood upper reflector
CA4WFRPO	Wide flood upper reflector
CL4HCL	Hex cell louver
CA4RSYM	4" symmetrical MesoOptics
CA4RLS6010	4" 60x10 linear MesoOptics
CA4RASYS8	4" asymmetrical 8° MesoOptics
CA4RASYS21	4" asymmetrical 21° MesoOptics

Footnotes for page 1

- IC rated up to 2000lm with AirSeal (A) frame, above 2000lm non-IC (L01 dimming option IC to 1500lm only).
- Emergency (EM6) frame requires remote mounted test switch (not compatible with 347V).
Order CAEM6TSCP mounting plate accessory. Not available with Chicago plenum (LC) option.
- Dim-to-warm (D2W) available only with 0-10V (Z10) and DALI (D) dimming options (available up to 2000lm).
- Tunable white available with 0-10v, DMX, DALI, and Lutron T, and RA dimming options (available up to 2000lm).
- Narrow spot beam available up to 2000lm.
- For remodeler installations, order light engine and trim only, no frame needed (not available with RA dimming).
- Linear driver profile, enables wireless connected lighting control (see page 7 for details).
Specify only with Non-IC (N) frame, not for use with LC, EM6, nor 9D2W options.

C4RA/C4SA Calculite LED 4" gen 3

Round & Square Adjustable Accent

Frame-in-kits

New Construction:

Galvanized stamped steel for dry or plaster ceilings. Pre-installed telescoping mounting bars from 13" to 24". For 4' distances, use 1/2" EMT, 1-1/2" x 1/2" U or C channel.

AirSeal (air-tight/IC):

Galvanized steel housing for dry or plaster ceilings. Pre-installed telescoping mounting bars from 13" to 24". Tested in compliance with ASTM E283 for airtight.

Max ceiling thickness is 0.75" (19 mm)
Min ceiling thickness is 0.5" (12 mm)

Patented install Mounting frame:

- Pre-installed mounting bars for fast and tool-less installs into T-grid & hat channel ceilings.
- Close-cut aperture design eliminates possibility of gap between ceiling opening and reflector flange.
- Separate wiring compartment for wiring frame to building allows inspection prior to light engine install.
- Simple plug-and-play connection between frame and light engine from below ceiling.

Dimming

All configurations are FCC Class A unless otherwise specified.

- Advance 0-10V 1% (Z10), logarithmic curve is standard, specify D2O for factory-set dim-to-off function, consult factory for linear dimming curve.
- EldoLED SOLODrive (SOL) 0-10v 0.1%
- Lutron PEQ0 (L) Hi-Lume Premier 0.1% EcoSystem
- Lutron LDE1 (LH) EcoSystem 1%
- Lutron L3DA (LD) Hi-Lume A 3-wire 1%
- Electronic low voltage (E) - forward or reverse phase dimming
- DALI (D) - DT6 DALI 0.1%
- DMX (DMX) - Digital Multiplexing with RDM 0.1%

Dimming Options

The following are factory-set options for the SOL, D, and DMX driver options (ex. DMXLIN):

SOL/D/DMX Logarithmic (-) standard
SOL/D/DMX Linear (LIN)
SOL/DMX Square (SQR)

Optical systems

Quality of light:

2 SDCM ensures color consistency from fixture to fixture and over the luminaire's long lifetime.

C4RA round trim construction:

Precision spun high grade aluminum reflectors with options for anodized or painted finishes.

C4SA square trim construction:

Precision die-cast aluminum reflectors with options for anodized or painted finishes.

Color rendering:

Consistent CRI of greater than 90 across the spectrum.

Dim to warm (D2W) and tunable white (6T):

Delivered CCT gradually warms from 3000-1800K along dimming range. 0-10V dimming only. Fixture-to-fixture consistency of ≤ 3 SDCM at 2700K & 3000K, and ≤ 5 SDCM at 1800K.

Diffusion Media

- MesoOptics PET film containing surface relieved, microscopic light diffusing structures/elements
- Optimizes luminaire efficacy via high optical transmission.
- Homogenizes light engine luminance providing smooth gradients of light and mitigates pixilation.
- Other distribution options available including linear spread and asymmetric.
- Hex cell louver may be ordered factory or field installed. Works with media holder supplied with original light engine.
- All media factory or field assembled to primary optic via integral holder.

Light engine

Quick connect power pack allows for easy installation and replacement from below ceiling with no need for additional wiring. This allows for:

- Frame and ceiling installation to be performed while still finalizing details such as lumen packages, CCT and control type.
- Easy replacement of electronics at end of life with minimal wasted material and labor required.
- Ease and upgradability of technology.

347V light engines are Z10 dimming only and include dedicated 347V driver. For 347V non-Z10 dimming, order T347-75VA field-installed step-down transformer accessory.

Predicted 90% lumen maintenance to 60,000 hours at 30C ambient.

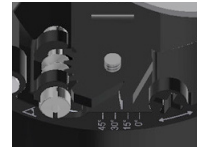
Remodeler Engine (R)

- No frame is required.
- Remodeler engine is suited for new construction, remodel, and retrofit applications.
- All wiring is done on the integral j-box to the engine.
- LCEM6 6W battery pack accessory is available for field installation.

Emergency

- Bodine BSL6 6W battery pack with self-test/diagnostic functionality installed.
- Indicator light/test switch mounted remote.
- CAEM6TSCP accessory ceiling plate to remote mount test switch. Required with EM6 frame.

Adjustability



- 45° vertical tilt, mechanical aiming with lock and indicator
- 362° rotation with lock
- Field changeable optics

Options and Accessories

Field Installed Emergency: Refer to Calculite-LyteProfile-EasyLyte Emergency Battery Pack specification sheet for more details.

C4RA round flangeless mud-in ring:

CA4RFMR - round mud-in ring for plaster installs.

C4SA square flangeless mud-in ring:

CA4SFMR - square mud-in ring for plaster installs.

CAEM6TSCP: Ceiling cover plate for remote mounted EM6 test switch. 1/2" (25mm) hole, 4 3/8" (109mm) x 2 3/4" (69mm) rectangular. Includes two mounting screws.

CAEM6: Field install EM6 kit with Bodine BSL6 6W battery pack with self-test/self-diagnostic, mounts to new construction frames. Includes remote ceiling plate for test switch.

SWCS: Interact Ready System Bridge Accessory Requires IRT9015 IR remote and Interact Pro App for commissioning.

T347-75VA: Field installable 347:120V 75VA step-down transformer, attaches to knock out on frame junction box, for use with non-IC (N) frame only. Not available with EM6 frame option.

Labels and Listings

- cULus listed for damp locations (wet loc. available)
- RoHS certified
- CCEA (frames with *LC suffix)
- Red List Declare label certified, ID SIG-0021 ([View full Declare label](#))

Warranty



5 year limited warranty

Visit [Signify.com/warranties](https://www.signify.com/warranties) for more information on Signify's standard 5-year limited warranty on complete luminaire systems.

C4RA/C4SA Calculite LED 4" gen 3

Round & Square Adjustable Accent

Polished Reflectors



Specular clear (CL): Most specular and most efficient finish, delivers maximum photometric performance but can produce a mirror image effect of the interior space.



Champagne bronze (CZ): Semi-specular finish that softens light at the source of the reflector while providing a warmer reflector appearance (slightly warmer).



Comfort clear (CC): Semi-specular finish that softens the light at the source of the reflector and creates a subtle, even luminance from the reflector cone.



White (WH): (matte) Brightest illuminated aperture and provides the smoothest transition to most ceilings when off (white is only available with a white flange).



Comfort clear diffuse (CD): Slightly diffuse clear finish, that eliminates iridescence and reduces the mirror image effect inherent with specular finishes.



Black (BK): (anodized) Specular finish that provides the lowest aperture brightness possible and significantly reduces source identification in a ceiling.

Flanges



White (-): (matte) Provides the smoothest transition to ceilings when off.



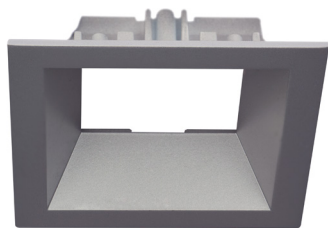
Polished (P): (matches aperture) Produces a continuous look throughout the reflector (aperture matching). Not available for square trims with CL, CD, CC, and CZ finishes.



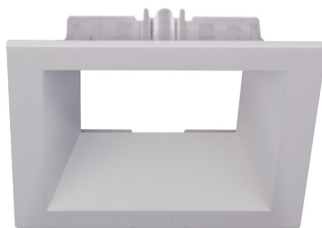
Flangeless (F): (flush-mount) Creates a flush, virtually seamless transition from aperture to ceiling.

Textured Reflectors

Shown as square reflectors but represent the finish of Calculite round reflectors.



Aluminum diffuse (D): Matte painted finish.



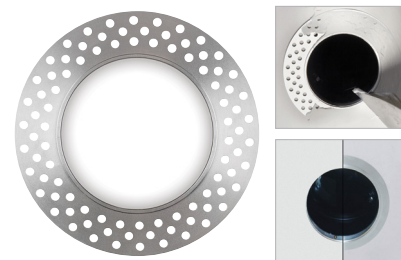
Textured white (WT): Matte painted finish.



Bronze (BZ): Matte painted finish.



Textured black (BT): Matte painted finish.

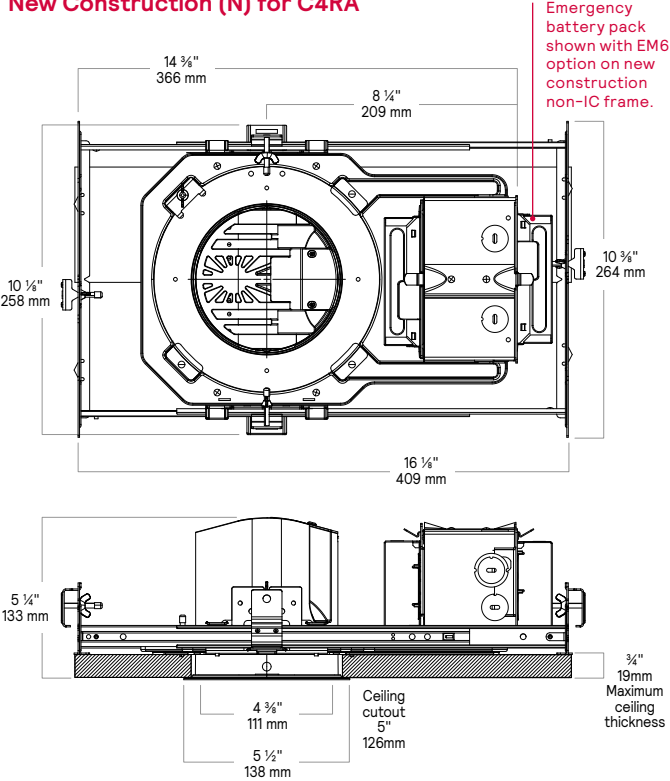


Mud-in ring (FMR): Low profile, non-metallic mud-in ring provides a raised rib to plaster up to and a 3/16" flange thickness. The ring is attached to the ceiling material as opposed to the frame-in kit to avoid conduction of heat and vibration which can cause yellowing or cracking of the plaster.

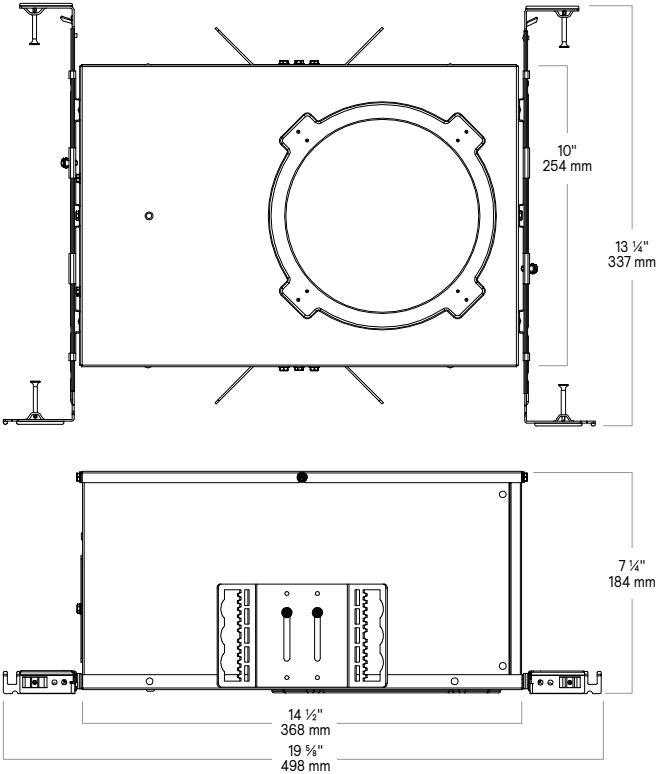
C4RA Calculite LED 4" gen 3

Round Adjustable Accent

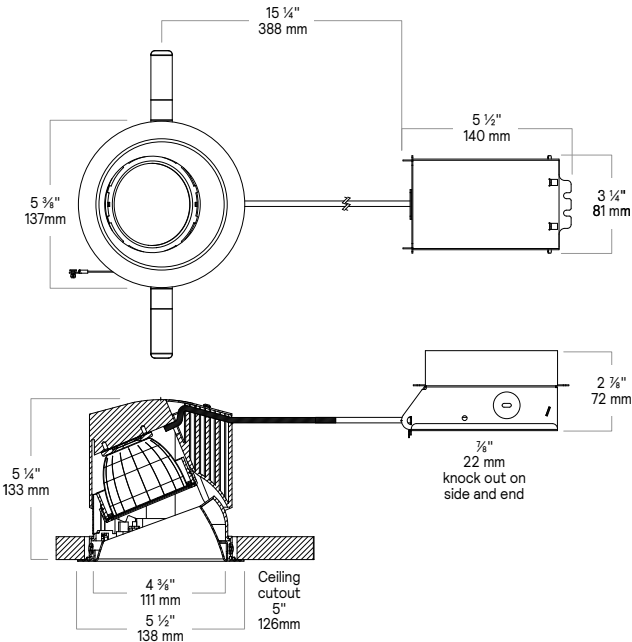
New Construction (N) for C4RA



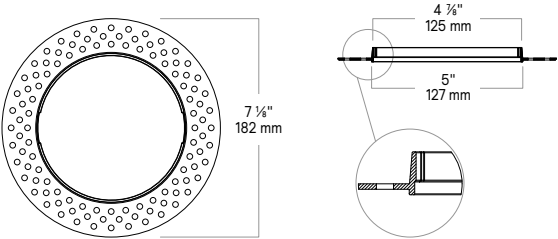
AirSeal (ASIC) & Chicago Plenum (LC) for C4RA



Remodeler (R) for C4RA



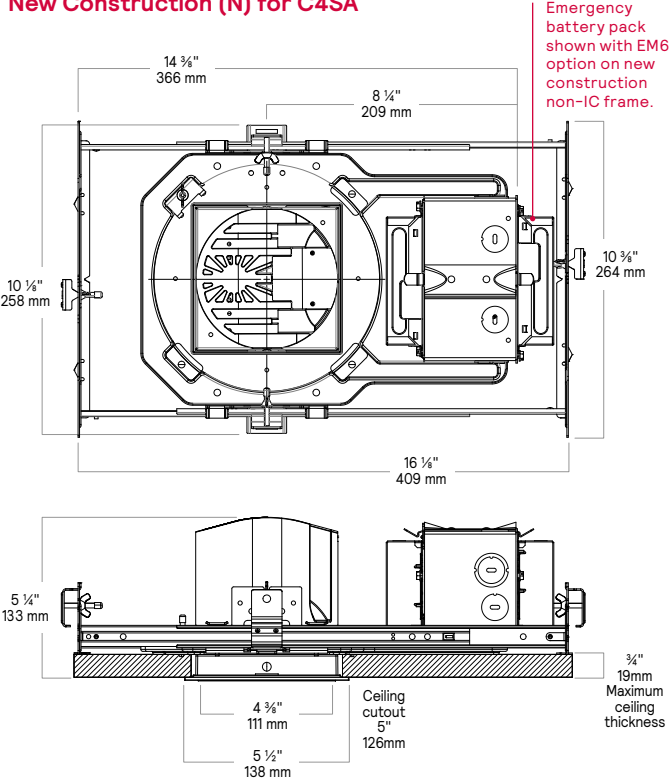
Flangeless mud-in ring (CA4RFMR) accessory for C4RA



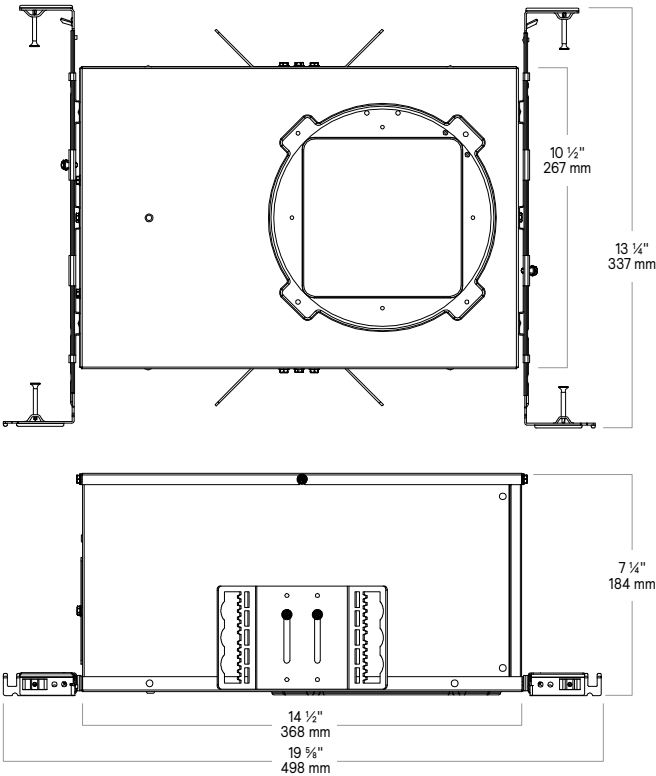
C4SA Calculite LED 4" gen 3

Square Adjustable Accent

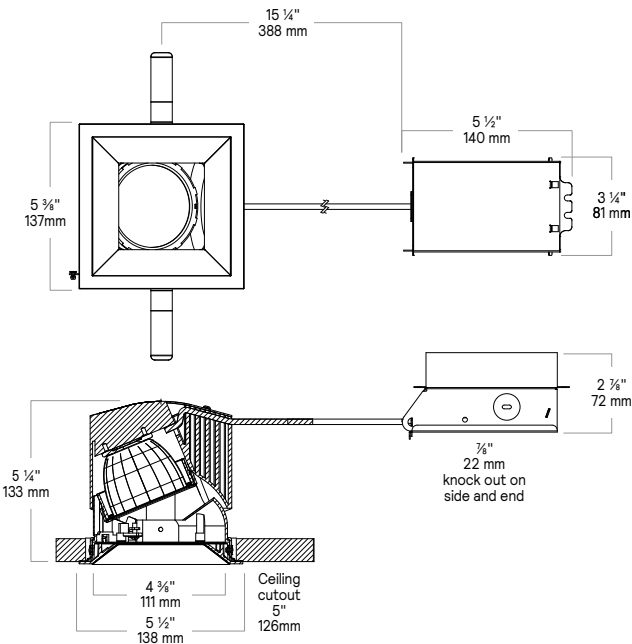
New Construction (N) for C4SA



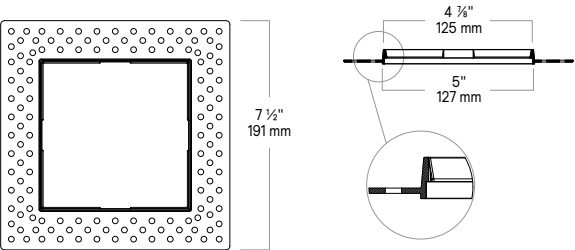
AirSeal (ASIC) & Chicago Plenum (LC) for C4SA



Remodeler (R) for C4SA



Flangeless mud-in ring (CA4SFMR) accessory for C4SA

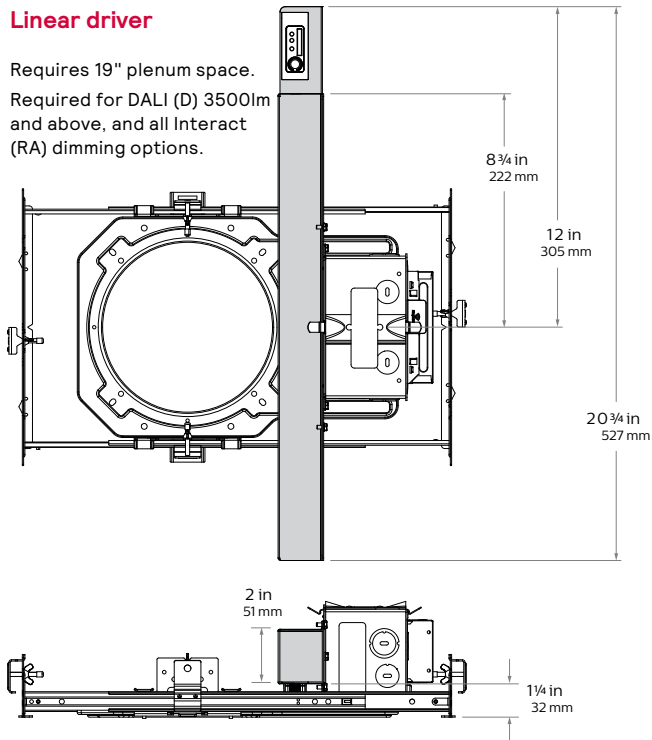


C4RA/C4SA Calculite LED 4" gen 3

Round & Square Adjustable Accent

Linear driver

Requires 19" plenum space.
Required for DALI (D) 3500lm
and above, and all Interact
(RA) dimming options.



C4RA/C4SA Calculite LED 4" gen 3

Round & Square Adjustable Accent



AccuRender Technology (CRI 90+)

The right light brings colors to life. Our new AccuRender technology helps ensure colors are rendered more accurately and consistently, while doing so as efficiently as CRI 80 products.



Standard CRI 80

Good color rendering and high efficacy



Standard CRI 90

Better color rendering and low efficacy



AccuRender

Best color rendering, color preference and high efficacy

Enjoy design flexibility

Full range of products and options:

- Available soon in across Lightolier portfolio for application flexibility
- Multiple color temperatures (CCTs) and lumen packages offered

Promote savings

High efficacy, with no penalty:

- Energy efficacy compares well to conventional 80 CRI
- Up to 25% more energy savings vs competitor 90 CRI¹
- Helps meet Title 24 requirements

Show your true colors

High color rendering:

- True to life colors that help energize your environment and render better flesh tones critical for healthcare hospitality and retail applications.
- R_a up to 94 CRI • R_f up to 92 TM-30
 R_g up to 67 CRI $R_{f,h1}$ up to 91 TM-30
 G_a up to 99 CRI R_g up to 100 TM-30
 C_g up to 94 CRI $R_{cs,h1}$ up to -5% TM-30

Achieve color balance

Best in class color consistency:

- Promote aesthetic harmony in your space with ≤ 2 SDCM

C4RA/C4SA Calculite LED 4" gen 3

Round & Square Adjustable Accent

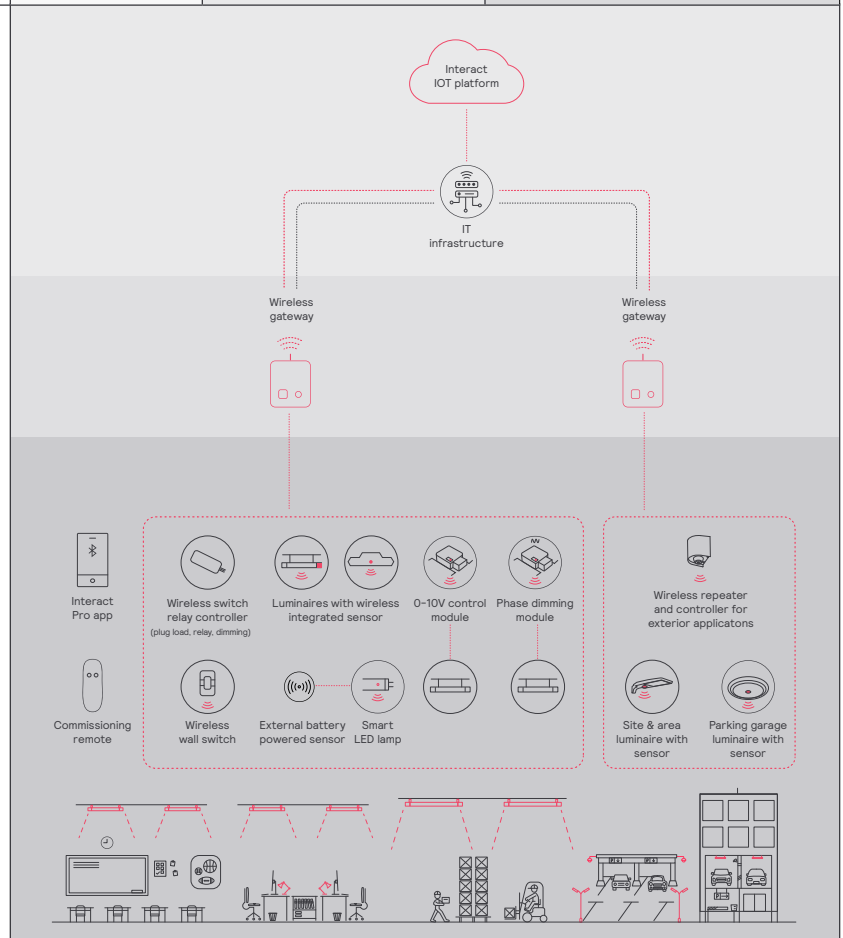
interact

	Standalone	Gateway	Gateway + IoT
Dimming, grouping, and zoning	✓	✓	✓
Bluetooth and ZigBee enabled	✓	✓	✓
Motion sensing and daylight harvesting	✓	✓	✓
Integration with 0-10V and phase dimming fixtures	✓	✓	✓
Code compliance	✓	✓	✓
Granular dimming and dwell time	✓	✓	✓
Correlated color temperature (CCT) tuning by switch	New	✓	✓
Support for sensor-based Tunable White luminaires	New	✓	✓
Energy reporting and monitoring		✓	✓
Scheduling		✓	✓
Demand response		✓	✓
BMS integration (BACnet)			✓
Floor plan visualization			✓
IoT sensors for wellness			✓
IoT Apps for productivity			✓

Currently supported maximum system size

To be able to design the lighting system correctly for the customer, it is important to know the prime characteristics of the system, its possibilities and limitations.

System level	
Total number of gateways	Unlimited
Total number of devices	200 per network
• Luminaires with integrated sensors	150
• Smart TLEDs	150
• Zones + groups	64
Total number of ZGP devices (sensors and switches)	50
• Sensors	30
• Switches	50
Group level	
Recommended number of lights	40 (maximum 150)
Number of ZGP devices	5
Number of scenes	16



C4RA/C4SA Calculite LED 4" gen 3

Round & Square Adjustable Accent

Wireless controls options

Interact

- SWZCS is a connected sensor with integral occupancy and daylight sensing and supports wireless mesh connectivity.
- The sensor works in the standalone mode (similar to SpaceWise) when configured without a gateway or in a cloud connected mode if a compatible gateway is used.
- Interact includes an App, a portal and a broad portfolio of wireless luminaires, lamps and retrofit kits all working on the same system.
- Startup is implemented via Interact Pro App (Android or iPhone) & Bluetooth connectivity. The App provides flexibility to choose between a gateway or non gateway mode for setup.
- Setup with the gateway requires wired internet access to the gateway. It is possible to add a gateway at a later point.
- Prepare project configuration steps remotely and use IRT9015 remote on-site to identify and group devices together.

Compatible with:

- SWS200 & UID8465 wireless scene switch
- Battery powered IP42 presence sensor OCC sensor IA CM WH 10/1
- Battery powered IP42 presence & daylight sensor OCC-DL sensor IA CM IP42 WH
- LCN3110: battery powered IP65 presence sensor, OCC sensor IA CM IP65W
- LCN3120: battery powered IP65 presence & daylight sensor, OCC-DL sensor IA CM IP65 WH
- For more information on Interact visit: interact-lighting.com/interactproscalablesystem

Radio only sensor (RA or RADIO)

- Integral RA or RADIO only sensor simply enables wireless mesh connectivity to the luminaire without any occupancy or daylight sensing.
- Ideal for applications where sensing functionality is managed by other Interact devices and the luminaire only needs to have wireless connectivity.
- Interact includes an App, a portal and a broad portfolio of wireless luminaires, lamps and retrofit kits all working on the same system.
- Startup is implemented via Interact Pro App (Android or iPhone) & Bluetooth connectivity. The App provides flexibility to choose between a gateway or non-gateway mode for setup.
- Setup with the gateway requires wired internet access to the gateway. It is possible to add a gateway at a later point.
- Prepare project configuration steps remotely, identify and group devices together onsite.
- Compatible with SWS200 and UID8465 wireless scene switch, wireless Occ sensor (OCC SENSOR IA CM IP42 WH 10/1) and wireless Day/Occ sensor (OCC MULTI SENSOR IA CM WH 10/1).
- For more information on Interact visit: interact-lighting.com/interactproscalablesystem

Sensor bundle (IAOSB or SB)

- A wireless IoT connected lighting solution for large enterprises that span across multiple floors, buildings and require multiple gateways.
- View all your projects under one dashboard and easily compare insights from multiple projects in one view.
- Compatible with SWS200 wireless scene switch, wireless Occ sensor (OCC SENSOR IA CM IP42 WH 10/1) and wireless Day/Occ sensor (OCC MULTI SENSOR IA CM WH 10/1) and wireless Occupancy or Daylight & Occupancy sensors available. Use Interact software and insights to increase building efficiency, achieve building wide integration and optimize space through occupancy analytics.
- IAOSB or SB option in addition to occupancy and daylights sensing supports advanced IoT capabilities, such as people estimation analysis, desk level temperature & humidity sensing, noise classification, and BLE beacon.
- Requires compatible Gateway and internet connectivity for commissioning.
- For more information, visit: interact-lighting.com/interactproscalablesystem

Emergency Options (ER100)

- **Power Sensing** (factory default) – Recommended UL924 option requires unswitched power sense line, absence of voltage on the normal circuit triggers luminaire to 100% output.
- **Power Interruption Detection** (field option) – Detects AC power interruption >30ms triggers 90 minute emergency mode with luminaire at 100% output.

Wired controls options

Interact (PoE):

- PoE based IoT connected lighting solution for large enterprises that span across multiple floors, buildings and require multiple gateways.
- Use Interact software and insights to increase building efficiency, achieve building wide integration and optimize space through occupancy analytics.
- Test switch and indicator light mounted on side of chassis on one end.
- Supports advanced IoT Apps on Personal Control, Space Management, wayfinding, room/desk reservation and offers open APIs for light control and data exchange.
- Integral sensor option for occupancy sensing (PIR) and/or daylight harvesting available for additional energy savings.
- Optional integral emergency controller and battery pack provides 600lm nominal output.
- PoE lighting controller is accessible from below.
- Emergency battery has a 3 month pre-installed shelf life, and must be stored and installed in environments of 20C to 30C (-4F to 86F) ambient, and 45-85% relative humidity.
- For more information on Interact Office Wired, visit: interact-lighting.com/office or www.usa.lighting.philips.com/systems/system-areas/offices.

Interact supported sensor option codes across Genlyte product lines

	Evokit	Day-Brite	Ledalite	Lightolier
ZigBee + Bluetooth + Sensing	SWZCS	SWZCS	CS	SBA accessory (external)
ZigBee + Bluetooth	RADIO	RADIO	RA	RA
ZigBee + Bluetooth + Sensing + Environmental data	IAOSB	IAOSB	SB	SB
ZigBee + Highbay + Sensing	-	SWZCSH	-	-

C4RA/C4SA Calculite LED 4" gen 3

Round & Square Adjustable Accent

Narrow Spot

Light engine		Input volts	Input freq	Input current	LED Drive current	Input power	LED Power	THD power @ Max Load	Power factor @ Max Load
C4_A05_NSZ10U/3	2	120V	50/60Hz	0.053A	0.15A	6.3W	5.0W	<10%	>0.9
	2	277V	50/60Hz	0.024A	0.15A	6.5W	5.0W	<30%	>0.9
	2	347V	50/60Hz	0.021A	0.15A	7.3W	5.0W	N/A	>0.9
C4_A10_NSZ10U/3	7	120V	50/60Hz	0.087A	0.25A	10.4W	8.6W	<10%	>0.9
	7	277V	50/60Hz	0.038A	0.25A	10.6W	8.6W	<10%	>0.9
	7	347V	50/60Hz	0.035A	0.25A	12.1W	8.6W	<30%	>0.9
C4_A15_NSZ10U/3	12	120V	50/60Hz	0.126A	0.36A	15.1W	12.7W	<10%	>0.9
	12	277V	50/60Hz	0.055A	0.36A	15.2W	12.7W	<10%	>0.9
	12	347V	50/60Hz	0.050A	0.36A	17.3W	12.7W	<25%	>0.9
C4_A20_NSZ10U/3	17	120V	50/60Hz	0.191A	0.55A	22.9W	19.4W	<10%	>0.9
	17	277V	50/60Hz	0.083A	0.55A	23.0W	19.4W	<10%	>0.9
	17	347V	50/60Hz	0.070A	0.55A	24.3W	19.4W	<20%	>0.9
C4_A25_NSZ10U/3	24	120V	50/60Hz	0.198A	0.60A	23.8W	20.2W	<10%	>0.9
	24	277V	50/60Hz	0.086A	0.60A	23.8W	20.2W	<10%	>0.9
	24	347V	50/60Hz	0.072A	0.60A	25.1W	20.2W	<20%	>0.9
C4_A30_NSZ10U/3	29	120V	50/60Hz	0.239A	0.72A	28.7W	24.5W	<10%	>0.9
	29	277V	50/60Hz	0.103A	0.72A	28.5W	24.5W	<10%	>0.9
	29	347V	50/60Hz	0.086A	0.72A	29.9W	24.5W	<15%	>0.9
C4_A35_NSZ10U/3	35	120V	50/60Hz	0.288A	0.86A	34.5W	29.7W	<10%	>0.9
	35	277V	50/60Hz	0.124A	0.86A	34.3W	29.7W	<10%	>0.9
	35	347V	50/60Hz	0.101A	0.86A	34.9W	29.7W	<10%	>0.9
C4_A40_NSZ10U/3	41	120V	50/60Hz	0.324A	0.96A	38.9W	33.5W	<10%	>0.9
	41	277V	50/60Hz	0.140A	0.96A	38.7W	33.5W	<10%	>0.9
	41	347V	50/60Hz	0.113A	0.96A	39.4W	33.5W	<10%	>0.9

Narrow Flood, Flood, Wide Flood

Light engine		Input volts	Input freq	Input current	LED Drive current	Input power	LED Power	THD power @ Max Load	Power factor @ Max Load
C4_A05_[NFIFL]WF] Z10U/3	4	120V	50/60Hz	0.050A	0.15A	6.0W	4.8W	<10%	>0.9
	4	277V	50/60Hz	0.023A	0.15A	6.3W	4.8W	<30%	>0.9
	4	347V	50/60Hz	0.020A	0.15A	7.0W	4.8W	N/A	>0.9
C4_A10_[NFIFL]WF] Z10U/3	9	120V	50/60Hz	0.072A	0.22A	8.7W	7.1W	<10%	>0.9
	9	277V	50/60Hz	0.032A	0.22A	8.9W	7.1W	<20%	>0.9
	9	347V	50/60Hz	0.029A	0.22A	10.1W	7.1W	<30%	>0.9
C4_A15_[NFIFL]WF] Z10U/3	14	120V	50/60Hz	0.114A	0.35A	13.7W	11.5W	<10%	>0.9
	14	277V	50/60Hz	0.050A	0.35A	13.8W	11.5W	<10%	>0.9
	14	347V	50/60Hz	0.045A	0.35A	15.7W	11.5W	<25%	>0.9
C4_A20_[NFIFL]WF] Z10U/3	19	120V	50/60Hz	#N/A	0.45A	#N/A	14.9W	#N/A	>0.9
	19	277V	50/60Hz	#N/A	0.45A	#N/A	14.9W	#N/A	>0.9
	19	347V	50/60Hz	#N/A	0.45A	#N/A	14.9W	#N/A	>0.9
C4_A25_[NFIFL]WF] Z10U/3	24	120V	50/60Hz	0.198A	0.60A	23.8W	20.2W	<10%	>0.9
	24	277V	50/60Hz	0.086A	0.60A	23.8W	20.2W	<10%	>0.9
	24	347V	50/60Hz	0.072A	0.60A	25.1W	20.2W	<20%	>0.9
C4_A30_[NFIFL]WF] Z10U/3	29	120V	50/60Hz	0.239A	0.72A	28.7W	24.5W	<10%	>0.9
	29	277V	50/60Hz	0.103A	0.72A	28.5W	24.5W	<10%	>0.9
	29	347V	50/60Hz	0.086A	0.72A	29.9W	24.5W	<15%	>0.9
C4_A35_[NFIFL]WF] Z10U/3	34	120V	50/60Hz	0.288A	0.86A	34.5W	29.7W	<10%	>0.9
	34	277V	50/60Hz	0.124A	0.86A	34.3W	29.7W	<10%	>0.9
	34	347V	50/60Hz	0.101A	0.86A	34.9W	29.7W	<10%	>0.9
C4_A40_[NFIFL]WF] Z10U/3	39	120V	50/60Hz	0.324A	0.96A	38.9W	33.5W	<10%	>0.9
	39	277V	50/60Hz	0.140A	0.96A	38.7W	33.5W	<10%	>0.9
	39	347V	50/60Hz	0.113A	0.96A	39.4W	33.5W	<10%	>0.9

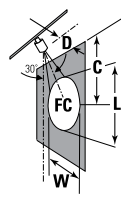
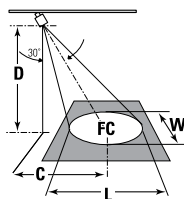
C4RA/C4SA Calculite LED 4" gen 3

Round & Square Adjustable Accent

Aiming angles

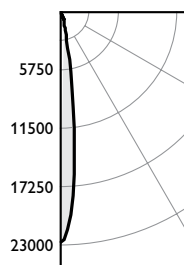
L and W are the outer points where the candle power drops to 50% of the maximum. FC are the initial footcandles at the center of the beam. Data shown is for 3000K, use the table on the right for CRI/CCT adjustment factors.

FC Footcandles
L Beam length
W Beam Width
D Distance
A Aiming Angle
C Distance to center beam
CBCP Center Beam Candlepower



Adjustment Factors

Standard	Shallow 1" Regress	CCT (90CRI)	Lumens
CL = 105%	WT = 112%	4000K = 104%	1500lm = 130%
CC = 100%	D = 100%	3500K = 100%	1000lm = 100%
CD = 80%	BZ = 77%	3000K = 96%	750lm = 70%
WH = 80%	BT = 74%	2700K = 90%	500lm = 50%
CZ = 78%			
BK = 40%			



Frame: 4ARN
Engine: C4RA20935NSZ10U
Trim: C4RACL

Output lumens: 2192lms
Input watts: 19.4W
CRI: 90min
CCT¹: 3500K
CBCP: 22,737cd
Beam Angle: 14°

Efficacy: 113.0lm/w
Report²: STMR-2778

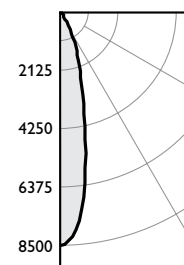
Narrow Spot, 2000lm engine, 113lm/W at 19W

30° Horizontal Aiming

Distance		Beam		
D	C	F.C.	L	W
10	5.8	148	3.3	2.8
12	6.9	103	3.9	3.4
14	8.1	75	4.6	4.0
18	10.4	46	5.9	5.1

30° Vertical Aiming

Distance		Beam		
D	C	F.C.	L	W
3	5.2	316	3.1	1.5
4	6.9	178	4.1	2.0
5	8.7	114	5.1	2.5
6	10.4	79	6.2	2.9



Frame: 4ARN
Engine: C4RA20935NFZ10U
Trim: C4RACL

Output lumens: 2078lms
Input watts: 17.3W
CRI: 90min
CCT¹: 3500K
CBCP: 8,480cd
Beam Angle: 24°

Efficacy: 120.1lm/w
Report²: STMR-3283

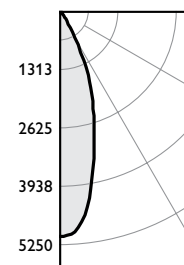
Narrow Flood, 2000lm engine, 120lm/W at 17W

30° Horizontal Aiming

Distance		Beam		
D	C	F.C.	L	W
6	3.5	153	3.5	2.9
8	4.6	86	4.6	3.9
10	5.8	55	5.8	4.9
12	6.9	38	6.9	5.9

30° Vertical Aiming

Distance		Beam		
D	C	F.C.	L	W
2	3.5	265	3.9	1.7
3	5.2	118	5.9	2.6
4	6.9	66	7.9	3.4
5	8.7	42	9.8	4.3



Frame: 4ARN
Engine: C4RA20935FLZ10U
Trim: C4RACL

Output lumens: 2049lms
Input watts: 17.9W
CRI: 90min
CCT¹: 3500K
CBCP: 5,060cd
Beam Angle: 35°

Efficacy: 114.5lm/w
Report²: STMR-2981

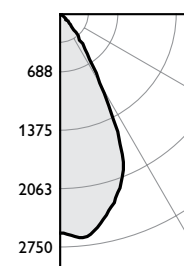
Flood, 2000lm engine, 59 lm/W at 16W

30° Horizontal Aiming

Distance		Beam		
D	C	F.C.	L	W
6	3.5	91	5.2	4.4
8	4.6	51	7.0	5.8
10	5.8	33	8.7	7.3
12	6.9	23	10.4	8.7

30° Vertical Aiming

Distance		Beam		
D	C	F.C.	L	W
2	3.5	158	7.2	2.5
3	5.2	70	10.8	3.8
4	6.9	40	14.4	5.0
5	8.7	25	18.0	6.3



Frame: 4ARN
Engine: C4RA20935WFZ10U
Trim: C4RACL

Output lumens: 2080lms
Input watts: 17.4W
CRI: 90min
CCT¹: 3500K
CBCP: 2,578cd
Beam Angle: 54°

Efficacy: 119.5lm/w
Report²: STMR-2867

Wide Flood, 1000lm engine, 55 lm/W at 16W

30° Horizontal Aiming

Distance		Beam		
D	C	F.C.	L	W
6	3.5	47	8.9	7.1
8	4.6	26	11.9	9.4
10	5.8	17	14.9	11.8
12	6.9	12	17.8	14.1

30° Vertical Aiming

Distance		Beam		
D	C	F.C.	L	W
2	3.5	81	36.9	4.1
3	5.2	36	55.3	6.1
4	6.9	20	73.7	8.2
5	8.7	13	92.2	10.2

1. Correlated Color Temperature within specs as defined in ANSI_NEMA_ANSI C78.377-2008: Specifications for the Chromaticity of Solid State Lighting Products.
2. Tested using absolute photometry as specified in LM79: IESNA Approved Method for the Electrical and Photometric Measurements of Solid-State Lighting Products.

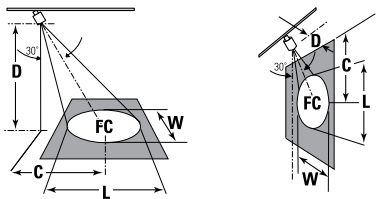
C4RA/C4SA Calculite LED 4" gen 3

Round & Square Adjustable Accent

Aiming angles

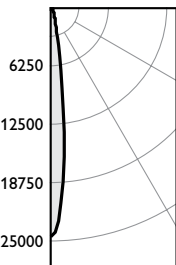
L and W are the outer points where the candle power drops to 50% of the maximum. FC are the initial footcandles at the center of the beam. Data shown is for 3000K, use the table on the right for CRI/CCT adjustment factors.

FC Footcandles
L Beam length
W Beam Width
D Distance
A Aiming Angle
C Distance to center beam
CBCP Center Beam Candlepower



Adjustment Factors

Standard	Shallow 1" Regress	CCT (90CRI)	Lumens
CL = 105%	WT = 112%	4000K = 104%	1500lm = 130%
CC = 100%	D = 100%	3500K = 100%	1000lm = 100%
CD = 80%	BZ = 77%	3000K = 96%	750lm = 70%
WH = 80%	BT = 74%	2700K = 90%	500lm = 50%
CZ = 78%			
BK = 40%			



Frame: 4ASN
Engine: C4SA20935NSZ10U
Trim: C4SACD
Output lumens: 2028lms
Input watts: 23.4W
CRI: 90 min
CCT¹: 3500K
CBCP: 24,525 cd
Beam Angle: 13°
Efficacy: 86.7lm/w
Report²: STMR-3344

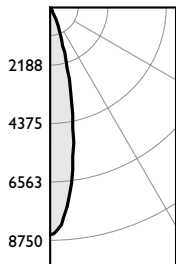
Narrow Spot, 2000lm engine, 113lm/W at 19W

30° Horizontal Aiming

Distance		Beam		
D	C	F.C.	L	W
10	5.8	159	3.1	2.6
12	6.9	111	3.7	3.2
14	8.1	81	4.3	3.7
18	10.4	49	5.5	4.7

30° Vertical Aiming

Distance		Beam		
D	C	F.C.	L	W
3	5.2	341	2.8	1.4
4	6.9	192	3.8	1.8
5	8.7	123	4.7	2.3
6	10.4	85	5.7	2.7



Frame: 4ASN
Engine: C4SA20935NFZ10U
Trim: C4SACD
Output lumens: 1748lms
Input watts: 17.0W
CRI: 90 min
CCT¹: 3500K
CBCP: 8,545 cd
Beam Angle: 24°
Efficacy: 102.8lm/w
Report²: STMR-3345

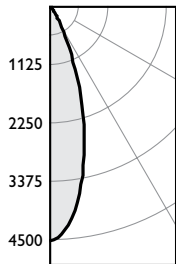
Narrow Flood, 2000lm engine, 103lm/W at 17W

30° Horizontal Aiming

Distance		Beam		
D	C	F.C.	L	W
6	3.5	154	3.5	2.9
8	4.6	87	4.6	3.9
10	5.8	56	5.8	4.9
12	6.9	39	6.9	5.9

30° Vertical Aiming

Distance		Beam		
D	C	F.C.	L	W
2	3.5	267	3.9	1.7
3	5.2	119	5.9	2.6
4	6.9	67	7.9	3.4
5	8.7	43	9.8	4.3



Frame: 4ASN
Engine: C4SA20935FLZ10U
Trim: C4SACD
Output lumens: 1648lms
Input watts: 17.0W
CRI: 90 min
CCT¹: 3500K
CBCP: 4,497 cd
Beam Angle: 33°
Efficacy: 96.9lm/w
Report²: STMR-3346

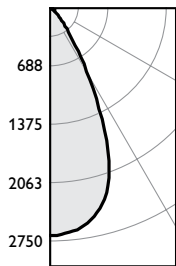
Flood, 2000lm engine, 97lm/W at 17W

30° Horizontal Aiming

Distance		Beam		
D	C	F.C.	L	W
6	3.5	81	4.9	4.1
8	4.6	46	6.5	5.5
10	5.8	29	8.1	6.8
12	6.9	20	9.8	8.2

30° Vertical Aiming

Distance		Beam		
D	C	F.C.	L	W
2	3.5	141	6.4	2.4
3	5.2	62	9.6	3.6
4	6.9	35	12.9	4.7
5	8.7	22	16.1	5.9



Frame: 4ASN
Engine: C4SA20935WFZ10U
Trim: C4SACD
Output lumens: 1998lms
Input watts: 17.0W
CRI: 90 min
CCT¹: 3500K
CBCP: 2,670 cd
Beam Angle: 52°
Efficacy: 117.5lm/w
Report²: STMR-3347

Wide Flood, 2000lm engine, 118lm/W at 17W

30° Horizontal Aiming

Distance		Beam		
D	C	F.C.	L	W
6	3.5	48	8.5	6.8
8	4.6	27	11.3	9.0
10	5.8	17	14.1	11.3
12	6.9	12	17.0	13.5

30° Vertical Aiming

Distance		Beam		
D	C	F.C.	L	W
2	3.5	83	27.3	3.9
3	5.2	37	40.9	5.9
4	6.9	21	54.5	7.8
5	8.7	13	68.1	9.8

1. Correlated Color Temperature within specs as defined in ANSI_NEMA_ANSI C78.377-2008: Specifications for the Chromaticity of Solid State Lighting Products.
2. Tested using absolute photometry as specified in LM79: IESNA Approved Method for the Electrical and Photometric Measurements of Solid-State Lighting Products.



© 2025 Signify Holding. All rights reserved. The information provided herein is subject to change, without notice. Signify does not give any representation or warranty as to the accuracy or completeness of the information included herein and shall not be liable for any action in reliance thereon. The information presented in this document is not intended as any commercial offer and does not form part of any quotation or contract, unless otherwise agreed by Signify.

Signify North America Corporation
400 Crossing Blvd, Suite 600
Bridgewater, NJ 08807
Telephone: 800-555-0050

Signify Canada Ltd.
281 Hillmount Road,
Markham, ON, Canada L6C 2S3
Telephone: 800-668-9008

All trademarks are owned by Signify Holding or their respective owners.